

# Piemonte Home Design<sup>n</sup>

Italian style,  
made with care

## 皮埃蒙特住宅设计

皮埃蒙特住宅设计项目的愿景是将皮埃蒙特地区的室内设计产品、家具和装饰运用在一体化设计的住宅空间中。将各个品牌的产品资源整合到一起，推广“意大利制造”的产品设计和工艺细节。

2019年10月该项目启动，由高校研究团队、国际地产开发商和宣传运营团队提供专业的支持，建立起一个皮埃蒙特品牌联盟，精心挑选能够代表当地设计理念和创新能力的产品。

插件式住宅的概念将皮埃蒙特地区的产品整合到一起，使用模块化的住房解决方案，将室内功能性空间比如浴室、厨房、储藏室等设想为预制的可互换插件。以不同的组合方式，搭配灵活的空间隔断和装饰系统，创造多样化的居住空间组合。这种创新的住房解决方案也可以根据开发商的需求适配不同的居住户型。

在研发新的住房解决方案的同时，参与项目的公司也在研究相关的营销策略和探寻合适的国际化道路以根据目标国家的住宅发展趋势提供相应的解决方案。

## 都灵商会创新项目



**Camera  
di commercio  
Torino**

都灵商会作为皮埃蒙特大区超过40万家公司的代表，以促进区域经济发展为己任，关注社会发展和消费者的反馈。



**Politecnico  
di Torino**



都灵理工大学（建筑与设计学院）- 中国屋研究团队  
都灵理工大学建筑和设计系的跨学科研究中心，专注于建筑和工程领域的高等教育、学术研究、技术转让等服务的产学研一体的研究机构。

## 合作伙伴

### 俄罗斯意大利商会

俄罗斯意大利商会助力于发展意大利和俄罗斯之间的经济、商业、技术、法律、科学和文化合作。

### Calibro Zero 设计事务所

总部设在意大利的创意设计事务所，专注于现实空间和数字空间设计，为用户提供提供更丰富的空间体验。

### Gianmarco Cavagnino 设计事务所

意大利的国际设计工作室，STORYMOVING®的推动者，以叙事的方式做设计。

### Arcos Interior室内设计事务所

在俄罗斯经营陶瓷和大理石贸易并与俄罗斯设计师和建筑师合作的意大利公司

### 欧洲设计学院

创意领域的高等教育机构，在大约50年的时间里培养了超过12万名设计、时尚、视觉艺术和传播方面的人才的。

## PIEMONTE HOME DESIGN

*The goal of Piemonte Home Design is to make the excellence of Piedmontese interior design, furniture and furnishings available in a single solution. This business development project brings together Piedmontese companies promoting the quality, research, and attention to detail of authentic Italian craftsmanship.*

*The project was launched in October 2019. With the support of a team of **researchers, international developers and communication experts**, a network of companies has been built up, selected for their products that showcase the region's capacity for innovation.*

*Piedmontese products have been used to create the **Plugin House**, a modular housing solution in which the indoor spaces (bathroom, kitchen, storage spaces) are designed as interchangeable plug-ins which may be reconfigured in a variety of ways and combined with a system of flexible compartments and decorations, offering easy flexibility in home environment design. This innovative housing solution can also be interpreted in different ways, depending on the needs of the developers.*

*In a parallel development to the housing solution, the companies involved embarked on a **marketing and internationalization path** to identify trends and solutions tailored to target countries.*

## A PROJECT OF THE TURIN CHAMBER OF COMMERCE



**Camera  
di commercio  
Torino**

### **Torino Chamber of Commerce.**

*Representing more than 400,000 companies operating at the regional level, the Turin Chamber of Commerce is a synthesis of local economic interests, with a particular focus on civil society and consumers.*



**Politecnico  
di Torino**



### **Politecnico di Torino** (Department of Architecture and Design) – China Room

*Research centre at the Department of Architecture and Design of the Politecnico di Torino, a public institution active in training, research, technology transfer and services in all fields of Architecture and Engineering.*

## PARTNERS

### **Italian-Russian Chamber of Commerce**

*An entity contributing to the development of economic, commercial, technical, legal, scientific and cultural cooperation between Italy, the Russian Federation and the Commonwealth of Independent States (CIS).*

### **Calibro Zero**

*Creative agency based in Italy specializing in the design of physical and digital spaces and enrichment of the user experience.*

### **Gianmarco Cavagnino**

*International design studio based in Italy, promoter of STORYMOVING®, an innovative method of conceiving projects as storytelling.*

### **Arcos Interior**

*Italian company operating in Russia in the ceramics and marble sector, in cooperation with Russian designers and architects.*

### **Istituto Europeo del Design (IED)**

*Creative Italian higher education institute which has trained over 120,000 students in Design, Fashion, Visual Arts and Communication over the last 50 years.*



# 目录

**01** 皮埃蒙特住宅设计

**02** 皮埃蒙特住宅设计品牌

**03** 插件式住宅设计

**04** 产品名录

## INDEX

**01**  
Design in the Piedmontese house

**02**  
The Companies of Piemonte Home Design

**03**  
Plug-in House

**04**  
Products



# 皮埃蒙特住宅设计

## Design in the Piedmontese house

意大利设计一直以其创造力和对审美的敏感，结合工艺和创新流程的能力，关注材料的性质和对供应链的掌控让其从一众设计风格中脱颖而出。随着时间的推移，这种特性使意大利设计能吸收经济，文化和科学各方面的最优秀资源，使意大利设计成为国际上最受欢迎的风格之一。

方案的能力是一切设计的基石。“设计”一词的意大利语翻译是“progetto”（方案），是本身包含未来概念的词。意大利设计从未仅仅局限于设计美丽的外形，它更注重在产品、服务和用户之间建立起互动关系；这种设计态度使意大利风格得到全世界的赞赏。意大利设计运动在两次世界大战之间诞生于意大利北部，或者准确地说，兴起于伦巴第大区，当时一些年轻的设计师和建筑师例如：Franco Albini, Achille and Pier Giacomo Castiglioni, Vico Magistretti

一开始思考并创造具有创新和现代感的物品，将功能和美感结合起来。一些在国际上知名的经典意大利设计就是在这种氛围中诞生的。在皮埃蒙特大区，除了设计水

### 在皮埃蒙特大区，创造性的想法是其主要行业的重要组成部分

平得到世界认可的汽车行业外，创造性的想法也是其他几个主要行业的重要组成部分，从建筑和生活领域——家具、装饰、家居用品、五金配件，到时尚领域——服装和配饰，以及体育行业。

开辟新的市场和为日常生活设计产品的能力是当地制造业和文化产业的内在驱动力。许多世界公认的设计标杆产品，如Bialetti的Moka咖啡壶以及Gufram设计的Cactus仙

人掌摆件和Bocca红唇沙发，都是皮埃蒙特地区设计和生产的产品。都灵作为皮埃蒙特的首府，是意大利主要的工业中心之一，钢铁、机械、化工、纺织和汽车工业的兴起，推动了这个城市近一个世纪的发展。近几十年来，都灵已成功地从工业中心转变为创意中心。都灵在长期的工业发展过程中积累了大量在设计和生产过程中的专业知识，为未来发展奠定了基础。都灵是意大利文化和创意领域最具活力的城市之一，2008年它成为世界设计之都，2014年它被联合国教科文组织指定为创意设计之城。

### 近几十年来，都灵已成功地从工业中心转变为创意中心。

Italian design has always stood out for its **creative dexterity** and **aesthetic sensitivity**, its ability to combine craftsmanship and innovative processes, its focus on **materials** and the influence of local supply chains on production. Over time, these characteristics have allowed Italian design to combine the best economic, cultural and scientific qualities, making it one of the most appreciated symbols of Italy abroad.

The ability to **project** has always been the cornerstone of design. The Italian translation of the term 'design' is 'progetto' (project), a word that carries the notion of the future itself. Italian design has never been confined merely to the production of beautiful shapes, but has also focused on the ability to build **relationships between products, services and users**; this attitude has made Italian design intelligible and appreciated throughout the world. The Italian design movement was born in northern Italy between the two World Wars, more precisely in Lombardy, where a few young designers and architects – **Franco Albini, Achille and Pier Giacomo Castiglioni, Vico Magistretti** – began to create objects with a new and contemporary touch that combined functionality and beauty. This is how some of the icons of Italian excellence in international design were born.

In **Piedmont**, besides the automotive sector whose design qualities have been recognized worldwide, creative ideas are the distinctive element of several other primary production sectors, from **architecture** – furnishings, accessories, homeware, taps and fittings – to **fashion** – clothing and accessories for people and writing – and **sport**.

---

*In Piedmont, creative ideas are the distinctive element of several other primary production sectors.*

---

The ability to develop new markets and design products for everyday life is inherent to the region's manufacturing and cultural fabric. Many products that are recognized across the world as design icons, like **Bialetti's Moka coffee pot** and other iconic objects of design such as the Cactus and the **Bocca Sofa by Gufram**, were designed and produced in Piedmont.

**Turin**, the region's capital, was one of the main Italian industrial centres with the rise of steel, mechanical, chemical, textile and automotive industries, which drove the development of the city for almost a century. In recent decades, the city has successfully transformed from an industrial centre to a **creative hub**.

---

*In recent decades, the city has successfully transformed from an industrial centre to a creative hub.*

---

Turin's know-how in design and production processes, acquired through its industrial past, has laid the foundations for its future.

It is one of the most dynamic cities in Italy in the cultural and creative fields, and was designated the **World Design Capital** in 2008 and **UNESCO Creative City of Design** in 2014.

## 都灵以及皮埃蒙特地区的设计产业数据\*。

2020年的数据揭示了都灵产业的重要性，近四分之三的公司共创造了3.76亿欧元的营业额，并为2,500多人创造了就业机会。这些数据主要得益于历史悠久的产品和交通设计公司（Italdesign-Giugiaro和Pininfarina）的贡献，以及长安汽车欧洲设计中心等新公司选择在都灵地区进行的本土化发展。公司营收超过1000万欧元，员工超过100人。

2020



资料来源: MIRA, 皮埃蒙特大区设计行业观察站 - 设计圈

在过去10年中，核心设计公司（以设计为核心业务的公司）的营业额平均增长率为3.5%，员工的增长率为2.7%。

在过去的20年里，皮埃蒙特的设计服务资源一直在增加，并经历了几年的核心设计初创企业的黄金发展期。

**+2,0%** 2008  
与前几年的相比

**+2,0%** 2010  
与前几年的相比

**+3,2%** 2017  
与2016年相比

**+1,9%** 2017  
与2020年相比

## FIGURES FOR DESIGN IN TURIN AND PIEDMONT\*

The 2020 overview shows the significance of Turin, with almost three quarters of Core Design companies (i.e. companies with design as their core business) generating **€376 million in turnover**, and employing more than **2500 people**. This data benefits from the contribution of historical product and transportation design companies (e.g. Italdesign-Giugiaro and Pininfarina), as well as new companies that have chosen Turin as a base (e.g. Changan Automobile European Designing Center) which have more than €10 million in turnover and more than 100 employees.

2020



\*Fonte: MIRA, Osservatorio regionale sul design in Piemonte - Circolo del Design

The average annual revenue growth for Core Design companies over the last 10 years was 3.5%, with a 2.7% average increase in the number of employees over the same period.

There has been increase in the offering of design services in Piedmont over the last two decades with a few peak years in Core Design start-ups:

**+2,0%** 2008  
compared to the corresponding figures for previous years

**+2,0%** 2010  
compared to the corresponding figures for previous years

**+3,2%** 2017  
compared to 2016

**+1,9%** 2017  
compared to 2020

# 皮埃蒙特的设计与室内设计：一段创新的历史

## Design and interior design in piedmont: a history of innovation

皮埃蒙特地区的设计底蕴源自于汽车行业，为之后的室内设计与家具公司提供了技术推动。如今，皮埃蒙特拥有享誉国际的制造商，如 Alessi 和 Serralunga，也有获得赞誉的品牌，如 Pininfarina 和 Giugiaro，还有设计界的新生代设计师。

与意大利其他的设计中心相比，都灵和皮埃蒙特大区除了汽车产业外设计行业在“意大利制造”繁荣时期错失发展机遇。然而，在从19世纪晚期到近代，我们可以识别出代表这一过程的地点、事件和人物，这一过程始于该地区的多样化工业化，后来转向汽车工业的生产主导地位，然后是汽车产业危机导致的碎片化，以及寻找定义城市和更广泛地区身份的新方式。皮埃蒙特室内设计和家具行业通过技术创新脱颖而出，通过与都灵其他的设计相关产业进行合作比如航空、航天和其他先进制造业。

推动创新和使用先进机械的驱动力主要来自航空航天行业和下游产业。

自2010年以来，高度专业化的设计和室内设计公司之间的互动展现持续发展的态势，当时为设计行业服务的本地公司遭遇了经济危机的打击。

在老客户的订单减少的情况下，空闲的设施被提供给其他行业，对一些公司来说，这是一个真正的方向变化。用创新方式处理材料的先进的机械，在全境开始普及。

### 用创新方式处理材料的 先进的机械

皮埃蒙特室内设计的创新体现在形状、材料和使用高度专业化的模具和机械制造等方面。这些创新是由该地区的创造性的工作氛围所决定的。这种创新态度在企业战略和目标的转变时期起到了关键作用。

一个典型的例子是金属化学蚀刻，这是一种现在用于家具生产的先进技术。这种技术转移的先驱之一是皮埃蒙特的装饰金属板的生产商Caino Design。

另一个例子是位于比耶拉的Serralunga，这是一家历史悠久的公司，从事工业用途的皮革和塑料加工。20世纪80年代，它是最早在该领域引入旋转模塑系统的公司之一，这种创新技术使生产容量高达3000升的中空物体成为可能。由于这项技术，该公司开始生产花瓶，通过将塑料等坚固、轻质的材料与厚重的产品相结合，创造出了一种流行的超大尺寸花瓶系列，彻底改变了传统行业。



圣光照亮一切，Philippe Starck, Serralunga  
*Holy All illuminato, Philippe Starck, Serralunga*



*The Piedmontese flair for design comes from the automotive sector, which enabled the subsequent technological drive among interior design and furniture companies. Today, Piedmont hosts internationally renowned manufacturers, such as Alessi and Serralunga, and respected brands, like Pininfarina and Giugiaro, as well as a new generation of designers.*

Compared to other poles of Italian design, Turin and Piedmont lagged behind during the boom years of Made in Italy, with the exception of the transport industry. However, from the late 19th century to recent times we can identify places, events, and people that represent this process that began with the diversified industrialization of the region, later shifting towards the productive dominance of the automotive industry, and thereafter the fragmentation, caused by the automotive crisis, and the search for new ways to define the identity of the city and wider region. The distinctive element of Piedmontese interior design and furniture is its **technological innovation**, being able to dialogue with other industrial sectors present in Turin like aeronautics, aerospace and advanced manufacturing. The push for innovation and the use of advanced machinery came specifically from the aerospace industry and involved subcontracted suppliers in the sector.

A more integrated interaction between highly specialized-design and interior design has been developing since 2010, when the economic crisis hit local companies supplying highly-specialized sectors. After a decrease in demand from historic clients, these facilities were made available to other industries, and for some

companies there was a real change of direction. **Advanced machinery**, which could process materials in an innovative way, became more widely available to other businesses throughout the region.

One example regards the chemical etching of metals, an advanced technology now used in furniture production. Among the pioneers of this conversion is the Piedmont-based **Caino Design**, producer of decorative metal boards.

Another example is **Serralunga** in Biella, a historic processor of leather and plastic for industrial purposes. In the 1980s it was one of the first companies in the region to introduce the rotational moulding system, an innovative technology that allowed the production of hollow objects with a capacity of up to 3000 litres. Thanks to this technology, the company started producing vases, revolutionizing a traditional sector by combining strong, lightweight materials like plastic with a bulky product, creating a popular line of off-of-scale vases.

Innovation in Piedmontese interior can be seen through shapes, materials and the use of highly specialized types of moulds and machinery. These processes are governed by the designing dexterity which has long permeated the region. This attitude to innovation has played a key role at a time of shifting corporate strategies and targets.



# 响应可持续性

在一个动态的、全球化的世界中，设计需要革新以变得可持续，最大的挑战是促进生态转型。需要通过技术创新，将功能性和舒适性与可持续性结合起来，并减少对环境的影响。设计师和企业必须成为物体和空间概念性和实用性再生的实践者：在开发新材料和产品的同时，再利用、修复、翻新和回收旧材料和产品，采用基于循环经济概念的可持续工艺和技术。我们需要重新思考每一个对象，从室内设计到智能住宅、移动、通信甚至智能城市。

如今新的设计方法正在出现，满足我们当代的需求。其中系统设计已经在组织和管理重大区域事件中进行了尝试和测试，而且都灵理工大学是该领域最先进的研究中心之一。系统设计在国际上与蓝色经济联系在一起，专注创建关系和连接的能力，可以从下至上的重新激活地区发展。

## Sustainability as a watchword

*Design in a dynamic, globalized world needs to regenerate in order to become sustainable, and the greatest challenge is promoting an ecological transition that combines functionality and well-being with sustainability and a reduced environmental impact through technological innovation. Designers and businesses must become the vanguard of a conceptual and practical regeneration of objects and spaces: To reuse, repair, refurbish, and recycle old materials and products in parallel with the development of new ones, using sustainable processes and technologies based on the concept of the circular economy. We need to completely rethink every object, from interior design to smart houses, mobility, communication and even smart cities.*

*New ways of designing are emerging to provide answers to our contemporary needs. Among them is Systemic Design, which has been tried and tested in the creation and management of major regional events, and the Politecnico di Torino is one of the most advanced research centres in this field. Systemic Design is linked internationally to the Blue Economy, where the focus is on the ability to create relationships and connections that can reactivate territories from the grassroots.*

## 皮埃蒙特大区的高等教育行业和国际影响力

都灵市坐拥七所大学和学院：都灵大学，都灵理工大学，都灵美术学院，欧洲设计学院，IAAD设计学院和皮埃蒙特东部大学，为大约10万名学生提供高等设计教育。在设计领域，最重要的活动是Artissima艺术展、View计算机图形展会、都灵艺术之城展会，Operae独立设计节，以及都灵设计周。都灵还拥有设计协会，联合国办事处、联合国教育科学、及文化组织的中心，以及ILO、UNICRI、UNSSC和SIOI中心，以及已被列入世界遗产名录的萨伏伊王室行宫，和波河丘陵地区。



## HIGHER EDUCATION IN PIEDMONT AND INTERNATIONAL EVENTS

*The city of Turin has seven universities and institutes offering advanced design courses to approximately 100,000 students: **Università di Torino, Politecnico di Torino, Accademia Albertina di Belle Arti, IED - Istituto Europeo di Design, IAAD - Istituto di Arti Applicate e Design and Università del Piemonte Orientale.** In the design sector the most important events are the **Artissima Fair, the View Conference and Fest, the Torino City of Design event, Operae – Independent Design festival, and the Torino Fashion Week.** Turin also hosts the **Circolo del Design, a UN and UNESCO centre with the seats of the ILO, UNICRI, UNSSC and SIOI, as well as the Residences House of Savoy, a World Heritage Site, and the Po Hills Biosphere Reserve, part of the UNESCO Man & Biosphere Program.***





# 皮埃蒙特式住宅

## The piedmontese house



Pininfarina architecture

为年轻人士设计的LOFT住宅，在大城市的历史中心的高端修复项目，改造的结构，大大小小的办公室，工作和研学空间，现代建筑和室内设计风格是这些空间的主要特征，以及历史建筑和别墅。皮埃蒙特式住宅结合了这几个方面的优点，体现了对居住环境的关注。

将可持续发展和能源效率等当代需求与低影响的天然材料的使用结合在一起的能力，与将舒适、自然和休闲放在首位的生活方式和设计趋势相结合。

皮埃蒙特的室内设计材料具有悠久的金属加工传统，继承于航空航天和汽车工业，以及形成了不同地区分工合作生产特定部件的地域特征。这种分工体现在皮埃蒙特北部黄铜制品生产，长期以来形成了一个水龙头和五金配件产业集群，以及皮埃蒙特南部高度专业化的木工产业。

舒适、自然和休闲放在首位的生活方式和设计趋势相结合。

Langhe地区位于皮埃蒙特南部，是联合国教科文组织世界遗产。作为一种Langhe地区标志性元素，使用手工砖将传统和创新结合在一起。手工砖是一种古老而灵活的材料，通过其材料的实用性和节能、声学舒适度以及减少环境影响方面的高性能很好的表达了当代设计语言。



Modern lofts for young professionals, luxury restorations in the historic centres of large cities, rehabilitated structures, small and large offices, work and research spaces where contemporary architecture and interior design are the main features of the personality of the place, as well as historic buildings and villas: The concept of the Piedmontese house combines several souls, all united by their **care for environments**.

The ability to bring together contemporary needs such as **sustainability** and energy efficiency with the use of low-impact **natural materials** is combined with lifestyle and design trends that put comfort, nature and leisure first.

Piedmontese interior design materials feature a great tradition of metalworking inherited from the aerospace and automotive industries, as well as territorial characteristics that have given rise to local districts specializing in the production of particular objects. This applies to **brass**

---

*lifestyle and design  
trends that put comfort,  
nature and leisure first.*

---

production, typical of northern Piedmont, where there has long been a cluster of businesses producing taps and fitting, and also to the great tradition of highly-specialized **carpentry** in southern Piedmont. Among the iconic elements of the Langhe, a UNESCO World Heritage Site in southern Piedmont, we find the union of tradition and innovation through the use of hand-made bricks, an ancient yet flexible material which nonetheless speak a contemporary language through their materiality and high performance in terms of energy efficiency, acoustic comfort and reduced environmental impact.



# 皮埃蒙特住宅设计品牌

## The Companies of Piemonte Home Design

*Il giardino di legno*

**BELLANDA**  
Esclusivo per l'arredo

**Stellar CARUSO**

**3D**

**ricrea**

**MARZIA BOAGLIO**  
LIGHT ART DESIGN

*Marzia Boaglio*

**n★o**  
nuovaosmo

**3D LEGNO**

**Fap2**  
ARREDI PERSONALIZZATI

**SEA & SYMPHONY**  
MOVING YOUR WORLD

**MASSERANO**  
CASHMERE  
SOLID WOOD

**DORO**

*Max Arredos*  
ART & DESIGN

**EXPO**

**ALICUCIO**

**EAP**  
ESCLUSIVO PER L'ARREDO

**BOSCHIS**

**SaluzzoArreda**  
ARREDI PERSONALIZZATI

**Frank&Frank**

**VERNEY**  
**Lovema**

**GIULINI G.**  
PER L'ARREDO

**ALESSANDRA SCARFO'DESIGN**  
design, studio and communication

**CavallaroCasa**  
Italian wonderlands

**AGENA**

**C.I.S.L.A.**  
COLLEGIO ITALIANO SEMPLICE LAVORARE ADESSO

**QUADRILATERO**

**dormìria**  
l'accento sul riposo

**MD**

**testatonda**

**FERRERO**  
LEGNO  
DESIGN VOGLI OPEN

**SARGOMMA**

**G.H.I. GROUP DESIGN SRL**

**PLASTIZ**

**pininfarina**  
ARCHITECTURE

**Vistadipunto**  
Arredi Anamorfoici Esclusivi  
by Ugo Ghisetti



## 3D LEGNO

在 90 年代初期我们开始在民用木工领域开展业务，自 2000 年以来，我们已经在航海领域取得了巨大成就。

我们在实现生产木制船体、内饰和外饰、玻璃纤维模具的木制模型、塑料材料和固体表面的加工方面有成熟的技能。其中主要技能之一是在处理每种材料和满足每项需求方面都有极大的通用性。

我们工作特点是在工作的各个阶段投入细心和热情。

*We began our activity in the field of civil carpentry in the early '90s and since 2000 we have acquired great achievements in the nautical world.*

*We have matured peculiar skills in the realization of wooden hulls, interiors and exteriors, wooden models for fiberglass molds, processing of plastic materials and solid-surface. Great versatility in the processing of every material and in the satisfaction of every need is one of our major skills.*

*Our work is characterized by the care and passion that we put into each stage of processing.*

### 产品线

户外家具  
室内家具  
家具配件  
木质帆船模版

### Products

Outdoor furniture  
Indoor furniture  
Furnishing accessories

### 荣誉资质

工艺卓越奖

### Recognitions

Craftsmanship Excellence

### 联系方式

公司：3D Legno di Paonessa Riccardo  
地址：Via Maiolo 53, 10044, Pianezza (TO), Italy  
网址：[www.3dlegno.com/en/](http://www.3dlegno.com/en/)

### Contacts

3D Legno di Paonessa Riccardo  
Via Maiolo 53, 10044, Pianezza (TO),  
Italy [www.3dlegno.com/en/](http://www.3dlegno.com/en/)





## 13 RICREA

13ricrea是一家从2007年由Angela Mensi领导的奢华生态设计公司，它以前卫的方式解读现代和多元化现实的需求。这个公司的基础建立在尊重再循环和升级再造的价值上，其目标是利用不同寻常的材料（已在其他生产中使用）创造家具和物品。

13ricrea有能力进行一种几乎无法识别的创新性的升级再造。其装饰的特殊性可以在不改变材质的情况下隐藏材料的起源，同时充分利用他们所拥有的常常出类拔萃的质量。

### 产品线

户外家具  
室内家具  
家具配件  
沙发&椅子  
凉亭  
百叶窗

### 联系方式

公司：13Ricerca s.a.s. di Angela Mensi & C.  
地址：Via Casale 3-bis, 15020, Serralunga di Crea (AL), Italy  
网址：www.13ricrea.com/?lang=en

*13ricrea, a company of luxury eco-design, wanted and guided since 2007 by Angela Mensi, interprets with vanguard the needs of a modern and versatile reality; the company is based on the respect of the values of re-cycling and up-cycling and its objective is creating furnishings and objects using unusual materials (already used in other productions).*

*13ricrea is able to practice an up-cycling so creative that is almost unrecognizable, the particularity of the decorations can hide the origin of the materials without changing their nature, also taking advantage of the often-exceptional qualities they possess.*

### Products

Outdoor furniture  
Indoor furniture  
Furnishing accessories

### Contacts

13Ricerca s.a.s. di Angela Mensi & C.  
Via Casale 3-bis  
15020, Serralunga di Crea (AL), Italy  
www.13ricrea.com/?lang=en





## AGENA S.R.L.

Agena成立于1966年，位于意大利的第一个首都都灵，这里也是许多意大利制造的重要象征的诞生地。Agena是一个全球分销的品牌，以艺术、建筑、文化和自然为灵感，设计、编辑和生产壁纸、面料和地毯。这一理念表达了对美的热爱、尊重和激情，对日常创新和研究的关注，以及对意大利手工艺传统和细节的尊重。

Agena为高端室内装饰制造或生产的面料、壁纸和地毯讲述了一种日常的极致奢华，这是创新创造力、精心运用色彩和获得意大利制造认证的的结果。

### 产品线

墙面装饰  
挂毯  
小地毯&厚地毯  
墙板面料

### 联系方式

公司：Agena s.r.l.  
地址：Corso Unione Sovietica 225, 10134, Torino (TO), Italy  
网址：www.agenagroup.it/en/

*Agena was born in 1966 in Torino, the first capital of Italy and the birthplace of some of the major symbols of Made in Italy.*

*Agena, a brand worldwide distributed, is design-edition-production of wallpapers, fabrics e rugs inspired by art, architecture, culture and nature. This philosophy expresses all the love, the respect and the passion for beauty and for a daily work of innovation and research, attention to the heritage of Italian craftsmanship and to detail.*

*Fabrics, wallpapers and rugs manufactured or produced by Agena for high-end interior decoration tell of an everyday luxury "par excellence" or the result of innovative creativity, the careful use of color and certified quality Made in Italy.*

### Products

Wall covering  
Tapestries  
Rugs & carpets

### Contacts

Agena s.r.l.  
Corso Unione Sovietica 225  
10134, Torino (TO), Italy  
www.agenagroup.it/en/



## ALESSANDRA SCARFÒ DESIGN

“Merci di Culto” 由 Alessandra Scarfò 于 2011 年创立，是一家由制作人、设计师、观察员和审计员组成的设计工作室。从艺术家到工匠，从建筑师到工程师，品牌旨在现实中与不同的职业建立协同关系。该公司的作品遍布意大利国内外的当代艺术博物馆（包括罗马国立二十一世纪艺术博物馆、威尼斯古根海姆博物馆、米兰艺术宫、都灵现当代艺术馆和电影博物馆）、概念店（米兰文艺复兴百货、巴黎的科莱特时尚店）和其他商店。该团队专注于产品、室内（用于个人和商业空间）、图形、网络、艺术、安装、通信、渲染和原型设计。

### 产品线

室内家具  
家具配件  
灯具

### 荣誉资质

作品“pantarei台灯”于2016年获得意大利A'设计大奖

### 联系方式

公司：Alessandra Scarfò Design  
地址：Via Andrea Provana 5/C, 10123, Torino (TO), Italy  
网址：www.mercediculto.com

*Merci di Culto founded in 2011 by Alessandra Scarfò is a design studio of producers and designers, observers and auditors. We forge synergistic relationships with different professional realities, from the artist to the artisan, from the architect to the engineer.*

*The company's production is distributed throughout Italy and abroad, in contemporary art museums (Maxxi in Rome, Guggenheim in Venice, Triennale in Milan, Gam and Museo del Cinema in Turin), in concept stores (La Rinascente in Milan, Colette in Paris) and in other stores.*

*The team is specialized in product, interiors (for individuals and commercial spaces), graphics, web, art, installation, communication, rendering and prototyping.*

### Products

Indoor furniture  
Furnishing accessories  
Lighting

### Recognitions

*A'design Award and Competitions in 2016 with the "lamp pantarei"*

### Contacts

Alessandra Scarfò Design  
Via Andrea Provana 5/C, 10123, Torino (TO), Italy. [www.mercediculto.com](http://www.mercediculto.com)





## ALICUCIO

Arcangelo Favata是一位在意大利都灵生活和工作的西西里艺术家。他在卡塔尼亚的美术学院毕业，选择了雕塑路径，并以设计专业论文《从废弃到物品的热爱》为结业题目。

2009年，他创立了Alicucio，这是一个自发的项目，一个创意空间，他在这里收集并处理城市周围发现的所有被丢弃的物体，以赋予它们新的生命。

Alicucio的作品范围从烛台、提篮、书架、椅子、办公椅到门以及许多其他原创家具。

*Arcangelo Favata is a Sicilian artist, who lives and works in the vibrant city of Turin, Italy. He graduated at Accademia di Belle Arti in Catania, choosing a pathway in sculpture with his final dissertation in design, titled From The Waste To The Love For Things.*

*In 2009 he founded Alicucio, a self-initiated project, a creative space where all the discarded objects founded around the city are collected and manipulated in their structures to give them a new life. Alicucio's works range from candelabrum, cofane, cervantes, chairs, desk chairs to doors and many other original furnishing items.*

### 产品线

室内家具  
室外家具  
装修配件  
餐具  
桌椅  
室内门  
木质玩具

### Products

Indoor furniture  
Outdoor furniture  
Furnishing accessories  
Dinnerware, beverageware  
& cutlery

### 联系方式

公司：Alicucio  
地址：Via Cuneo 5-bis, 10152, Torino (TO), Italy  
网址：www.alicucio.com

### Contacts

Alicucio  
Via Cuneo 5-bis  
10152, Torino (TO), Italy  
www.alicucio.com



## ATELIER CARUSO

Atelier Caruso是一个专门从事高端面料以及软体家具和窗帘的生产，将工艺技能与家具和设计历史相结合的第三代家族企业。在工作室里，您可以购买精美的面料，并以此来定制家居装饰和衣物：窗帘、沙发和扶手椅、床和床罩、脚凳和坐垫。此外，他们还提供关于室内装饰和布置的协调产品的家具咨询，例如墙纸、装饰灯具、地毯和家具，这些都在展示室中销售。

### 产品线

室内家具  
室外家具  
装修配件  
床品  
布艺  
地毯  
墙纸  
装饰灯  
定制沙发  
家具面料

### 荣誉资质

工艺卓越奖

### 联系方式

公司：Atelier Caruso  
地址：Via Maria Vittoria 25, 10123, Torino (TO), Italy  
网址：[www.ateliercaruso.it/english/](http://www.ateliercaruso.it/english/)

*Atelier Caruso is a third-generation family business specialized in high-end fabrics and in the production of upholstered furniture and curtains, with craftsmanship skills combined with those of furniture and design history.*

*At the Atelier, it is possible to buy fine fabrics and with them make the furnishings and clothes of your home made to measure: curtains, sofas and armchairs, beds and bedspreads, poufs and cushions. In addition, they offer furnishing consultancy on coordinated products for interior decoration and setting, such as wallpaper, decorative lamps, carpets and furniture, for sale in the showroom.*

### Products

Indoor furniture  
Outdoor furniture  
Furnishing accessories  
Bed linen  
Blinds & curtains

### Recognitions

CRAFTSMANSHIP EXCELLENCE

### Contacts

Via Maria Vittoria 25  
10123, Torino (TO), Italy  
[www.ateliercaruso.it/english/](http://www.ateliercaruso.it/english/)





## BELLANDA S.R.L.

Bellanda集团于1966年作为金匠行业的模具制造商成立，但在短短几年内，它将生产转向精密机械模具，并开设了自己的钣金成型部门。从一开始，公司的独特特点就是能够横向操作各种不同的产品领域，同时保持在所有产品都具有高质量和创新性的特点：家具、汽车、空调、家用电器、游戏和电子产业。

多年来，它成功地与许多客户建立了持久的关系，这些关系建立在有价值的合作上，并以创造和完善产品以及改善生产流程为目标。

### 产品线

室内家具  
家具配件  
支撑轴承架  
天花板支架  
台面配件

### 荣誉资质

UNI EN ISO 9001质量管理体系参考标准国际认证

### 联系方式

公司：Bellanda s.r.l.  
地址：Via dell'Automobile 53, 15121, Alessandria (AL), Italy  
网址：[www.bellanda.biz/en/](http://www.bellanda.biz/en/)

*Bellanda Group was founded in 1966 as mold manufacturer for goldsmith sector, but in a few years, it changed the production into molds for precision mechanics and it opened its own sheet metal forming division. Right from the start, the distinctive feature of the company is the ability to act transversally through the most varied product sectors while maintaining the characteristics of high quality and innovation in all products: furniture, automotive, air conditioning, household appliance, games and electronic industries.*

*Over the years it succeeded in establishing long-lasting relationships with many customers, relationships founded on valid cooperation and oriented toward creating and perfecting products and improving productions processes.*

### Products

Indoor furniture  
Furnishing accessories

### Recognitions

UNI EN ISO 9001 reference standard for Quality Management Systems internationally recognized

### Contacts

Bellanda s.r.l. Via dell'Automobile 53  
15121, Alessandria (AL), Italy  
[www.bellanda.biz/en/](http://www.bellanda.biz/en/)



## BOSCHIS 1913 S.R.L.

Boschis是一家由家族经营的公司，由Edoardo Boschis在1912年创立，他是都灵老一辈设计大师之一。这家公司的历史就是都灵工艺的历史，一直延续到今天，由他的子女和孙子女们继续经营。Boschis始终如一地致力于提供私人家具定制服务和拎包入住项目。从公司成立之初，它的优势就在于拥有非凡的创造力和对细节的关注，现在也是如此。多年来，它提供了许多优秀的设计，并与意大利最具代表性的建筑师进行了合作。

*Boschis is a family company. It was founded in 1912 by Edoardo Boschis who was one of the masters of the old generation of Turin people. The history of the company is that of Turin craftsmanship, continued to today by his children and grandchildren. Its institutional vocation was that of furniture designed to customer specification and turnkey projects and was never departed from. From the beginning of the company its points of force were, and still are, its remarkable creativity and attention to detail. Over the years, there have been some very significant examples of prestigious realizations for and cooperation with some of the most representative Italian architects.*

### 产品线

室内家具  
室外家具

### Products

Indoor furniture  
Outdoor furniture

### 联系方式

公司：Boschis s.r.l.  
地址：Via Cottolengo 45, 10072, Mappano (TO), Italy  
网址：www.boschis.com/en/

### Contacts

Boschis s.r.l.  
Via Cottolengo 45  
10072, Mappano (TO), Italy  
www.boschis.com/en/



## C.I.S.L.A. S.R.L. – HFB

C.I.S.L.A.公司创立于1962年，位于Busano的工业园区。C.I.S.L.A.能够向全球主要汽车制造商、在各个产品领域（例如铁路、航空、重型车辆、吊椅系统、纺织品、船舶等）使用精密锻造产品的小众公司提供一整套技术能力和尖端技术解决方案，从而使其成为正在开发高附加值印刷产品的理想合作伙伴。其灵活的结构被证明能够在市场上推出顶级质量的产品，而对于机械和技术能力的投资倾向则使其能够预期市场动态，调整其核心业务，并提供越来越完整的服务。

### 产品线

室内家具  
装修配件  
灯具  
机械零件  
车顶框架

### 荣誉资质

UNI EN ISO 9001:2015  
UNI EN ISO 14001:2015  
ISO TS 16949:2002

### 联系方式

公司：C.I.S.L.A. s.r.l.  
地址：Via Stefano Bruda 28, 10080, Busano (TO), Italy  
网址：www.cisla-srl.it/eng/

*The C.I.S.L.A. Company has been in business since 1962 and it is placed in Busano's industrial park. The C.I.S.L.A. is able to offer the main world car manufacturers, niche companies that use precision-forging products in the various product sectors (railways, aeronautics, heavy vehicles, chairlift systems, textiles, naval, etc.) a package of technical skills and cutting-edge technological solutions, such as to make it the ideal partner for those who are developing printed products with high added value. The agile structure has proven to be able to put top quality products on the market, while the propensity to invest in machinery and technical skills has allowed it to anticipate market dynamics, modifying its core business and offering an increasingly complete service.*

### Products

Indoor furniture  
Furnishing accessories  
Lighting

### Recognitions

UNI EN ISO 9001:2015  
UNI EN ISO 14001:2015  
ISO TS 16949:2002

### Contacts

C.I.S.L.A. s.r.l.  
Via Stefano Bruda 28, 10080, Busano (TO), Italy. [www.cisla-srl.it/eng/](http://www.cisla-srl.it/eng/)





## CAVALLARO CASA S.N.C.

Elements by Cavallaro s.r.l. 是一家位于都灵的意大利定制家具工厂，专门生产高端定制室内装饰和专属家具。我们生产所有类型的室内装饰：住宅（别墅，公寓，房屋），商业（商店，酒店，办公室，餐厅，展览摊位），游艇内饰等。我们还有自己的专属定制家具线，可在我们的展示厅中查看。在我们的工作中，我们使用各种高质量的材料——不仅是木头，还有大理石，石头，金属，创新的饰面，艺术玻璃，贵金属，以及如现代陶瓷表面等环保材料等等。

### 产品线

室内家具  
专属家具

### 荣誉资质

工艺卓越奖  
Houzz2020最佳设计奖

### 联系方式

公司：Cavallaro Casa s.n.c.  
地址：Strada Del Drosso 181, 10135, Torino (TO), Italy  
网址：www.cavallarointeriors.com/en/

*Elements by Cavallaro s.r.l. is an Italian custom furniture factory based in Turin, specialized in the production of high-end custom made interiors and exclusive furniture. We produce all types of interiors: residential (villas, apartments, houses), commercial (shops, hotels, offices, restaurants, exhibition stands), yachts interiors and other. We also have our own line of exclusive custom furniture pieces, available in our showroom. In our work, we use various high quality materials – not only wood but also marble, stones, metals, innovative finishes, artistic glass, precious metals, eco-friendly materials like modern ceramic surfaces and many other.*

### Products

Indoor furniture

### Recognitions

Craftsmanship Excellence  
Best of Houzz 2020 Houzz2020

### Contacts

Cavallaro Casa s.n.c.  
Strada Del Drosso 181  
10135, Torino (TO), Italy  
www.cavallarointeriors.com/en/

# CONAMOLE DESIGN

艺术设计师MAXALABISO制作的铝质和树脂装饰板可以根据客户的需求按主题和风格进行定制。

艺术装饰板采用数字艺术图像制作，经过丙烯酸颜料处理，添加金属粉末和钻石。这些装饰板是模块化的，可配置为任何格式，适用于任何类型的室内外空间，具有防水性，可以用LED背光制造透明效果。

MAXALABISO艺术装饰板的独特设计使它们在任何环境中都能成为焦点，例如SPA，健身中心，游艇，游泳池，酒店，俱乐部，零售商店，室内和室外环境。

## 产品线

灯具  
室内家具  
室外家具  
家具配件  
壁纸

## 荣誉资质

LUXlife-UK 杂志在 2021 年 LUX 全球卓越奖中授予 Design Conamole 为“个性化室内设计装饰面板最佳制造商 - 意大利”

2021 年官方奖项链接: <https://lnkd.in/gJGDk8E7>

## 联系方式

公司: Conamole Design  
网址: [www.maxalabiso.com](http://www.maxalabiso.com)

*The decorative panels in aluminum and resin made by the Art-Designer MAXALABISO are Customizable product by subject and style according to the customer's needs.*

*The Art Panels are made with DigitalArt images, treated with acrylic colors, metallic powders, diamonds. These are modular and configurable objects in any format, for any type of indoor and outdoor space, they are Water-proof and can be LED backlit with a transparency effect.*

*The unique design of the MAX-ALABISO Art Panels makes them protagonists in any Contemporary Scenario such as SPA, Wellness Centers, Yachts, Swimming Pools, Hotels, Clubs, Retail Stores, Indoor & Outdoor.*

## Products

Lighting  
Indoor furniture  
Outdoor furniture  
Furnishing accessories  
Wall covering

## Recognitions

*LUXlife-UK Magazine awards Design Conamole at the LUX Global Excellence Awards 2021 as "Best manufacturer of Personalized Interior Design Decorative Panels - Italy"*  
*link Official Awards 2021: <https://lnkd.in/gJGDk8E7>*

## Contacts

[www.maxalabiso.com](http://www.maxalabiso.com)



## CONSORZIO SALUZZO ARREDA

Saluzzo Arreda联盟于2009年成立，这个联盟向那些意识到创新的必要性，但同时又渴望忠实于传统和质量的当地手工艺公司抛出了合作的橄榄枝。他们优先选择天然材料，采用传统的组装方式，以天然油蜡进行抛光，以及其他一些改进措施，从生产初期到最终报废，都全程尊重环境，制造出了“意大利制造”的手工家具。我们的哲学倾向于使用来自受控再造林区域的意大利木材，如胡桃木、杨树、橡木、樱桃木、落叶松，以及潜在的木材再利用，为其赋予新的用途和功能。

### 产品线

手工木质家具

### 荣誉资质

皮埃蒙特卓越工匠

### 联系方式

公司：Consorzio Saluzzo Arreda s.r.l.  
地址：Via Provinciale 13, Isasca (CN)  
网址：www.saluzzoarreda.it

*The Saluzzo Arreda Consortium was founded in 2009 proposing a project to local artisan companies aware of the need for renewal, but at the same time longing to stay loyal to tradition and quality. Preference for natural materials, traditional assembly, polishing based on natural oils and waxes, and other improvements allow the creation of handicraft Made in Italy furniture in full respect of the environment from the beginning to the end of their life. Our philosophy is oriented towards the use of Italian wood coming from controlled reforestation areas such as walnut, poplar, oak, cherry, larch and the eventual reuse of wood worked for new uses and functions.*

### Products

Handmade wooden furniture

### Recognitions

Piemonte Eccellenza Artigiana

### Contacts

CONSORZIO SALUZZO ARREDA s.r.l.  
Via Provinciale 13, Isasca (CN)  
www.saluzzoarreda.it





## COVEMA VERNICI

Covema Vernici S.p.A. 成立于工业迅速发展的50年代，初为油漆及辅助产品的销售商，后来，公司开始自行生产内部涂料。多年来，为了满足市场需求的增长，该公司的生产线进行了多元化：从蛋彩画到合成瓷漆，从可水洗的墙壁颜料到透明涂料，从防锈到水性丙烯酸瓷漆。短短几年内，Covema因其高质量的生产和提供的广泛产品而在意大利取得了巨大的成功。1986年，公司转型为股份制公司也证实了这一成功。

*Covema Vernici S.p.A. was founded in Torino in the fifties (a period characterized by an impetuous industrial recovery) as seller of paints and complementary products. Later on, the company started its own production of in-house paints.*

*Over the years, production diversified to respond to the growing market demand: from tempera paints to synthetic enamels, from washable wall colors to transparent paints, from rustproofing to water-based acrylic enamels.*

*In a few years, Covema became very successful in Italy for the quality of its production and the vastness of the range offered. This success was confirmed in 1986 by the transformation into an S.p.A. (joint stock company).*

### 产品线

墙纸  
墙面涂料

### Products

Wall coverings

### 荣誉资质

ISO-9001标准

### Recognitions

Certificazione ISO-9001

### 联系方式

公司：Covema Vernici s.p.a.  
地址：Strada della Barra 5, 10040, Druento (TO), Italy  
网址：www.covemavernici.com

### Contacts

COVEMA VERNICI S.P.A.  
Strada della Barra 5  
10040, Druento (TO), Italy  
www.covemavernici.com



## DORODESIGN

DORODESIGN® 于2009年在都灵成立，初为一个工业设计工作室，后发展成为一个产品、家具和室内设计工作室。过去十年中，得益于一个融合了六种文化的年轻创意团队，工作室已经进化到设计和沟通层面，为客户和合作伙伴提供全面的服务，帮助他们在各种项目中，无论是实体还是数字化，实现目标。根据具体情况，设计会将产品设计、室内和家具、平面设计、包装和通信紧密结合，通过在意大利到中国的国际经验来实现这一目标。

### 产品线

灯具  
浴室和卫生洁具  
餐具  
室内家具  
室外家具  
家具配件

### 荣誉资质

Interieur奖--2012年荣誉奖  
红点设计奖--获奖者 2013  
红点设计奖--荣誉提名2013  
海尔--2016年最佳设计供应商  
海尔--2018年金画奖

### 联系方式

公司: DORODESIGN  
地址: Corso Marconi 24, 10125, Torino (TO), Italy  
网址: [www.dorodesign.com](http://www.dorodesign.com)

*DORODESIGN® was born in Turin in 2009 as an industrial design studio and has developed into a product, furniture and interior design studio. Over the past ten years, the studio has evolved into design and communication, thanks to the presence of a young creative team that involves six cultures, providing a complete service to help customers and partners to achieve their goals on a wide range of projects, physical and digital. Depending on the cases, the design intertwines the product design, the interiors and furnishings, the graphics design, packaging and communication, through an international experience from Italy to China.*

### Products

Lighting  
Bathroom & sanitary ware  
Dinnerware, beverage ware & cutlery  
Indoor furniture  
Outdoor furniture  
Furnishing accessories

### Recognitions

Interieur Awards – Honourable Mention 2012  
Red Dot Design Award – Winner 2013  
Red Dot Design Award – Honourable mention 2013  
Haier – Best Design Supplier 2016  
Haier – Golden Drawing Award 2018

### Contacts

DORODESIGN®  
Corso Marconi 24, 10125, Torino (TO), Italy, [www.dorodesign.com](http://www.dorodesign.com)





## EXPO S.R.L.

对葡萄酒和室内装饰的热情，对生活 and 所有的馈赠的热爱，这些是Expo设计师在创造无与伦比的Expo Home系列时的指导灵感。

这是一个独特的系列，以其形状、大小和设计脱颖而出。它是技术和优雅的完美结合。通过采用工业化过程和手工艺技术，实现了极高质量的制造。每个产品都使用高质量的材料制成，对细节的关注尤其用心。Expo Home系列完全在意大利制造，位于都灵郊区的Expo工厂。这些产品是最伟大的国际厨师和侍酒师的首选，为了满足希望充分享受家庭生活的葡萄酒爱好者的需求，他们的设计进行了调整。

### 产品线

室内家具  
家具配件

### 荣誉资质

“Quadro Vino” 获得了2014年 “Horeca 24年度创新奖”  
(Sole24ore集团)

### 联系方式

公司: Expo s.r.l.  
地址: Via Giuseppe Di Vittorio 11, 10098, Rivoli (TO), Italy  
网址: [www.expohome.it](http://www.expohome.it)

*Passion for wine and interiors and a love for life and all its gifts were the guiding inspiration for Expo designers in creating the unrivaled Expo Home collection.*

*A unique collection, that stands out in shape, size and design. The perfect match between technology and elegance. Extremely high-quality manufacturing achieved by employing industrial processes and craftsmanship alike. Each product is made with high-quality materials and painstaking attention to detail. Expo Home collection is entirely made in Italy, in the Expo premises just outside Turin. The products of choice for the greatest international Chefs and Sommeliers were revisited to suit the needs of wine lovers who wish to live their home to the fullest.*

### Products

Indoor furniture  
Furnishing accessories

### Recognitions

*“Quadro Vino” has won the “Horeca 24 Innovation of the year” (Sole24ore group) in 2014*

### Contacts

EXPO S.R.L.  
Via Giuseppe Di Vittorio 11  
10098, Rivoli (TO), Italy  
[www.expohome.it](http://www.expohome.it)



## FAP CERAMICHE

FAP Ceramiche生产的瓷砖使用最高品质的材料，坚持原创、时尚的风格，这是对未来室内设计、建筑、时尚和生活方式趋势的持续、热情的研究成果。公司的目标是创造可以一起使用并允许结合由不同材料，具有不同色彩和对比度的陶瓷灵感的地砖和白体瓷砖系列，从而创造出原创和大胆个性化的室内装饰。由于有了FAP，地板和瓷砖成为了大胆的代名词，无论形状和颜色的和谐/冲突，都可以在两个表面上创造出惊人的效果和精致的纹理。这些结合了设计和功能的丰富多彩的陶瓷，为个性化和创新的实现提供了无限可能。

### 产品线

墙砖

### 荣誉资质

ISO 45001:2018

ISO 9001:2015

ADI（工业设计协会）永久设计观察站选择了我们公司的设计作品：绽放之星发布于ADI设计指数2020中，该作品也入围了享有盛誉的奥古斯丁国际工业设计协会2020奖的两年期作品的第一卷。

### 联系方式

公司：FAP Ceramiche

地址：Via Ghiarola Nuova 44, 41042, Fiorano Modenese (MO), Italy

网址：[www.fapceramiche.com/en/](http://www.fapceramiche.com/en/)

*The tiles produced by FAP Ceramiche are made using materials of the highest quality following a style that is original, always up-to-the-minute and the result of constant, passionate research into future trends in interior design, architecture, fashion and lifestyle. The objective of the tile company is to create collections in stone-ware and white body that can be used side by side and allow the combination of ceramics inspired by different materials, with different nuances and contrasts, thus creating original and boldly personalised interiors. Thanks to FAP, floors and tiles become an excuse for daring, for creating stunning effects on both surfaces with harmonious/clashing shapes and colours, and sophisticated textures. Highly colourful ceramics that combine design and functionality, and favour creativity and personalisation.*

#### Products

Wall covering

#### Recognitions

ISO 45001:2018, ISO 9001:2015, The ADI (Associazione per il Disegno Industriale) Permanent Design Observatory has selected our Bloom STAR by FAP for publication in the ADI Design Index 2020, the first volume of the two-yearly cycle of works shortlisted for the prestigious Compasso d'Oro ADI 2020 award

#### Contacts

FAP CERAMICHE. Via Ghiarola Nuova 44, 41042, Fiorano Modenese (MO), Italy. [www.fapceramiche.com/en/](http://www.fapceramiche.com/en/)



## FAP2 S.N.C.

FALEGNAMERIA ALDO POGGIO成立于1980年，而FAP2的名字包含了创始人名字中的历史记忆和“2”这个数字，象征着第二代，也代表着面临新的商业挑战的变化的激励。

FAP2是一家木匠工作室，可以根据特定的项目制作定制家具。从厨房到起居室，再到卧室，该公司都可以为客户的需求提供完美的项目，从而在质量、可靠性和服务方面为他/她提供最好的体验。

### 产品线

室内家具  
橱柜

### 荣誉资质

皮埃蒙特地区“卓越工匠”奖章认证

### 联系方式

公司：FAP2 s.n.c.  
地址：Regione San Vito 101, 14042, Calamandrana (AT), Italy  
网址：<https://www.facebook.com/fap2architetturedinterni>

*Founded in 1980 as FALEGNAMERIA ALDO POGGIO, the name FAP2 contains the historical memory of the founder in the letters adopted and the number “2” as a symbol of the second generation and the stimulus for a change linked to new business challenges.*

*FAP2 is a carpenter's shop that creates custom-made furniture according to a specific project. From the kitchen to the living room, up to the bedroom, the company has the perfect project for its customer's needs giving him/her the best in terms of quality, reliability and service.*

### Products

*Indoor furniture*

### Recognitions

*Marchio regione Piemonte “Eccellenza Artigiana”*

### Contacts

*FAP2 S.N.C.  
Regione San Vito 101  
14042, Calamandrana (AT), Italy  
<https://www.facebook.com/fap2architetturedinterni>*





## FERREROLEGNO S.P.A.

FerreroLegno是一家意大利制造商和分销商，提供一系列100%意大利制造的室内门，适合住宅使用。这些门采用木材、有光泽或哑光的漆（多达1950种颜色）、玻璃/铝制玻璃、层压板等多种材料制成，大小不一（最高可达290厘米，宽度各异）。

从本质上讲，门的设计就是要开放。它们对灵感、影响力和趋势持开放态度，对创新、建议、风格和寓言持开放态度，对趣味、极简主义和轻盈的深刻感觉持开放态度。

就像门的本质一样，设计的本质也在于匹配。将各种风格、形状、玻璃板、层压板、漆料和木材饰面进行搭配，创造一个符合您口味的环境，就像为您量身定做的西装一样。即使这套“西装”就是一座房子。

### 产品线

室内家具  
家具配件  
室内门

### 荣誉资质

ISO 9001:2015 质量管理认证  
ISO 14001:2015 环境管理认证  
ISO 45001:2015 健康与安全管理认证  
财务稳健的顶级公司-DUN & BRADSREET/CRIBIS（世界前 3%）  
FerreroLegno 的 MAGAZINE FEEL 媒体之星奖

### 联系方式

公司：FerreroLegno s.p.a.  
地址：S.S. 28 del Colle di Nava, 26, 12060, Magliano Alpi (CN), ITALY  
网址：<https://www.ferrerolegno.com/en/>

*FerreroLegno is an Italian manufacturer and distributor of a wide range of 100% Made in Italy interior doors for residential use in wood, shiny or matt lacquer (up to 1950 colours), glass/glass aluminium, laminate in various heights (up to 290cm) and widths. Doors, by their very nature, are designed to be open. Open to inspirations, influences and trends. Open to creativity, suggestions, styles and allusions. Open to playfulness, minimalism, and the profound tangibility of lightness. There's something else that's in the very nature of design, as well as in the nature of doors: matching. The matching of genres, profiles, glass panes, laminates, lacquers, and wood finishes, creating an environment that matches your tastes like a tailor-made suit. Even when that suit is a house.*

### Products

Indoor furniture  
Furnishing accessories

### Recognitions

ISO 9001:2015 QUALITY MANAGEMENT, ISO 14001:2015 ENVIRONMENTAL MANAGEMENT, ISO 45001:2015 HEALTH AND SAFETY MANAGEMENT, PRIME COMPANY FOR FINANCIAL SOLIDITY-DUN & BRADSTREET/CRIBIS (WORLD TOP 3%), Ferrerolegno FEEL MEDIASTAR AWARDS for MAGAZINE FEEL by FerreroLegno

### Contacts

FERREROLEGNO SPA, S.S. 28 del Colle di Nava, 26, 12060, Magliano Alpi (CN), ITALY. [www.ferrerolegno.com/en/](http://www.ferrerolegno.com/en/)



"E MILANO

## FRANK&FRANK

Frank&Frank项目致力于通过设计独特且定制的皮革城市地图，将我们对世界的视野带来的情感表达出来，这些地图适用于各种环境，如家庭、办公室、酒店等。

Marcella Molinini和Roberto De Gregorio深信地图的魅力，并借助他们在时尚和视觉设计领域多年的经验和技能，落实这一理念。

他们总是满怀好奇心和热情地重新解读城市地图，将其视为城市生物、几何图形、颜色、迷宫、文化和空间的承载者，打开了我们对生活环境的全新视角。

通过这个独特的室内设计项目，他们每天都被好奇心、激情和渴望驱动，赋予我们生活的环境更多的特色和美丽。

*The Frank&Frank project is about telling the emotion of the vision of the world through the passion for designing unique and tailor-made leather city maps for any kind of setting: home, office, hotel etc.*

*Marcella Molinini and Roberto De Gregorio believe in the charm of cartography and cultivating this mission starting from their multi-year of experience and skill in the field of fashion and visual design. Always curious and passionate reinterpreting the city maps like urban creatures, geometries, colors, mazes, cultures and spaces as carriers of emotions, opening new perspectives about the places we live in.*

*With this unique interior design project, they are daily driven by curiosity passion and desire to give character and beauty to the settings in which we live in.*

## 产品线

室内家具  
家具配件  
皮革装饰画

## Products

Indoor furniture  
Furnishing accessories

## 联系方式

公司: Frank&Frank  
地址: Via del Carmine, 4 / 2terC, 10122, Torino (TO), Italy  
网址: [www.frank-frank.com](http://www.frank-frank.com)

## Contacts

Frank&Frank  
Via del Carmine, 4 / 2terC  
10122, Torino (TO), Italy  
[www.frank-frank.com](http://www.frank-frank.com)



## GHI GROUP

G.H.I.是一家小型手工艺企业，于2011年在库内奥成立。每一件G.H.I.产品都是独创性和手工艺的结晶。我们将客户的理念作为我们每个定制家具项目的中心，为了提供独特且定制的解决方案，我们特别关注材料的选择和对环境的尊重。

我们一只眼看向过去，一只眼看向未来，我们的目标是创造出美丽且真实的物品，就像我们执行的每一个项目一样。正因为如此，我们会跟踪每项工作的所有阶段，从理念的产生到项目的研究，从建设到安装，每一个环节都会进行严格的质量和功能性检查。

### 产品线

室内家具  
户外家具  
家具配件  
窗户&门  
室内门  
定制家具

### 荣誉资质

CE认证，在我们公司我们只使用经过认证的产品

### 联系方式

公司：G.h.i. Group Design s.r.l.  
地址：Via A. Campana 1, 12016, Peveragno (CN), Italy  
网址：www.ghiwooddesign.it

*G.H.I. is a small artisan business founded in 2011 in Cuneo. Each G.H.I. product is the result of ingenuity and manual work. We place the customer's ideas at the center of each of our bespoke furniture project, in order to offer unique and customized solutions with particular attention to materials and respect for the environment.*

*With one eye on the past and one on the future, our intent is to give life to something beautiful and authentic, like every project we carry out. Precisely for this reason, we follow all the stages of each work, from the birth of the idea to the study of the project, from construction to installation, subjecting each element to careful quality and functional compliance checks.*

### Products

Indoor furniture  
Outdoor furniture  
Furnishing accessories

### Recognitions

*CE certifications, in our company we just use certified products*

### Contacts

*G.h.i. Group Design S.r.l.  
Via A. Campana 1  
12016, Peveragno (CN), Italy  
www.ghiwooddesign.it*





## IL GIARDINO DI LEGNO

“Il Giardino di Legno” 自2003年以来一直活跃在意大利市场，为其客户提供高品质的柚木花园家具。

Il Giardino di Legno的产品系列将激发您创造出一个既体现优雅、质量、设计和传统价值的开放空间，您可以以愉悦的心情布置并充分享受这一切。

得益于与不同公司的合作和在国际活动中的持续出席，如今，该品牌在全球40多个国家销售，从美国到日本，已经成为户外家具市场的主要参与者。

### 产品线

户外家具  
沙发&长凳  
桌子&椅子  
遮阳伞&躺椅  
户外配件

### 荣誉资质

合同使用的产品认证 (CATAS)  
耐火性认证  
FLEGT认证  
FSC认证

### 联系方式

公司: Silat s.r.l.  
地址: Corso G. Matteotti 2, 10121, Torino (TO), Italy  
网址: [www.ilgiardinodilegno.it/en/](http://www.ilgiardinodilegno.it/en/)

*“Il Giardino di Legno” has been active as a brand in the Italian market since 2003 offering to his customers high quality teak garden furniture.*

*The collections by Il Giardino di Legno will inspire you to create an open space that reflects the values of elegance, quality, design and tradition, which you can furnish with pleasure and enjoy to the full.*

*Thanks to the cooperation with different companies and to the continuous presence in international events, today, the brand is distributed in over 40 Countries throughout the world from the USA to Japan, becoming a leading player in outdoor furniture market.*

### Products

Outdoor furniture

### Recognitions

Products certification for contract use (CATAS)  
Fire Resistance  
FLEGT  
FSC

### Contacts

Silat s.r.l.  
Corso G. Matteotti 2  
10121, Torino (TO), Italy  
[www.ilgiardinodilegno.it/en/](http://www.ilgiardinodilegno.it/en/)



## MAISON CLAIRE

对美的热情、创新力和卓越的手工艺是Maison Claire的独特标志，这家公司成立于90年代，位于Varallo Sesia，一个充满历史和艺术的优雅小镇。

系列产品由Clara Bertoli和Giulia Scalvini倾心打造，使用了如亚麻、棉花、丝绸和羊绒等贵重纤维，展现了工艺制造的特点，风格从现代、线性、优雅，到经典，且饰以蕾丝和刺绣，见证了他们的经验和对面料的深入了解。产品种类丰富且优雅，包括床上用品、餐桌用品、浴室用品、羊绒和内衣。

### 产品线

百叶窗和窗帘  
床上用品  
毛巾和浴袍  
桌布  
毯子  
家用香水

### 荣誉资质

皮德蒙特优秀工匠认证

### 联系方式

公司：Maison Claire s.r.l.  
地址：Corso Valsesia 12B, 13017, Quarona (VC), Italy  
网址：[www.maisonclaire.it/en/](http://www.maisonclaire.it/en/)

*A passion for beauty, creativity and artisan excellence is the distinctive mark of Maison Claire, founded in the 90's in Varallo Sesia, an elegant little town abounding in history and art.*

*The collections are created with the greatest of care by Clara Bertoli e Giulia Scalvini using noble fibers such as linen, cotton, silk and cashmere which highlight the artisanal manufacture, ranging from the contemporary, linear and elegant, to the classic, enriched by laces and embroidery, bearing witness to their experience and in-depth knowledge of fabrics and creating rich, elegant variety: Bed, Table, Bath, Cashmere and Lingerie.*

### Products

Blinds & curtains  
Bed linen  
Towels & bathrobes  
Tablecloths

### Recognitions

Piemonte Eccellenza Artigiana

### Contacts

Maison Claire S.r.l.  
Corso Valsesia 12B  
13017, Quarona (VC), Italy  
[www.maisonclaire.it/en/](http://www.maisonclaire.it/en/)





## MARZIA BOAGLIO

MARZIA BOAGLIO工作室的诞生是在承继了“意大利制造”的独特价值观和专业技巧的文化背景下，通过长期的艺术、风格和专业发展的结果。这使我们理解如何将设计创新与本地传统技能相结合。

受到对创新的强烈兴趣的驱动，我们在每一项作品中都寻求原材料与表达之间的完美结合，使之与您的个人品味和需求紧密相连。我们的理念建立在专注于设计和生产各种系列产品，采用可持续材料，尊重自然资源。

*The birth of the MARZIA BOAGLIO studio's is the result of a long artistic, stylistic and professional development within a culture that inherits the unique values and know-how of Made in Italy. This allows to understand how to combine design innovation with the traditional skills typical of local craftsmanship.*

*Driven by a strong interest in innovation, in each work, we seek out the perfect connection between raw material and expression, perfectly linking with your personal taste and requirements. Our concept was established focusing on the design and production of various collections, made with sustainable materials and respect for natural resources.*

### 产品线

室内家具  
家具配件  
墙纸  
桌子  
橱柜  
墙面装饰画

### Products

Indoor furniture  
Furnishing accessories  
Wall covering

### 联系方式

公司: Marzia Boaglio s.r.l.  
地址: Via Bonafous 8, 10123, Torino (TO), Italy  
网址: [www.marziaboaglio.it/?lang=en](http://www.marziaboaglio.it/?lang=en)

### Contacts

MARZIA BOAGLIO S.r.l.  
Via Bonafous 8  
10123, Torino (TO), Italy  
[www.marziaboaglio.it/?lang=en](http://www.marziaboaglio.it/?lang=en)



## MASSERANO

Masserano Cashmere已经经营了三代。这家意大利公司能够开发出一系列珍贵的羊绒产品，以满足每一个客户的需求。

每一个产品都是对风格和颜色的细心研究和选择的结果。每一个项目都是使用传统的纺纱、编织、针织过程以及比耶拉纺织区的工艺制作的，那里也是公司的总部所在地。

对于Masserano来说，羊绒是通过披肩、毯子、浴袍、拖鞋、坐垫和配件的系列收集来装饰家庭的重要元素，所有的产品都可以定制，并在世界上超过30个国家的奢侈精品店和设计师商店有售。

### 产品线

毛巾&浴袍  
床单&枕头  
披肩&毯子  
拖鞋&靠垫  
羊绒配件

*Masserano Cashmere has now been running for three generations. The Italian company has been able to develop its range of products in precious cashmere adapting to the needs of every single client.*

*Every product is the result of careful research and selection of style and colour. Each item is produced using the traditional process of spinning, weaving, knitting and the craftsmanship of the textile district of Biella, where the company is based.*

*Cashmere is for Masserano the vital element to embellish the home through a collection of throws, blankets, dressing gowns, slippers, cushions and accessories, all customisable and available in more than thirty countries in the world from luxury boutiques to designer stores.*

### Products

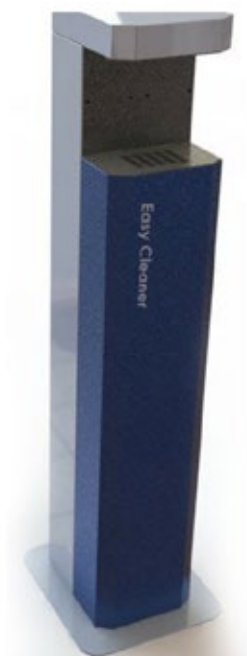
Towels & bathrobes  
Bed linen & pillows

### 联系方式

公司: Masserano Cashmere  
地址: Strada Cascina Cortella 70/A, 13900, Biella (BI), Italy  
网址: [www.masseranocashmere.com/?lang=en](http://www.masseranocashmere.com/?lang=en)

### Contacts

Masserano Cashmere  
Strada Cascina Cortella 70/A  
13900, Biella (BI), Italy  
[www.masseranocashmere.com/?lang=en](http://www.masseranocashmere.com/?lang=en)



## METALDESIGNER

自成立以来，该公司以其创新性质而引人注目，这使得它能够与其行业内的知名公司展开重要的合作。

该公司在金属加工行业有着高度的技术技能，并通过多学科方法，为其客户提供完整和定制的解决方案。MetalDesigner生产自己设计的电机和机电设备，同时也为第三方，特别是在民用和工业轻型钢结构领域进行生产。它提供3D设计、原型制作和想法工程服务；其技术部分使用完整的CAM解决方案，这些解决方案与最现代的3D设计系统集成。

### 产品线

室内家具  
室外家具

### 联系方式

公司：MetalDesigner s.r.l.  
地址：Via Torino 6, 10088, Volpiano (TO), Italy  
网址：www.metaldesigner.it

*Since its inception, the company stood out for its innovative character, which led it to develop important collaborations with well-established companies in its sector.*

*With high skills in the metal processing sector and through a multidisciplinary approach, the company provides complete and tailor-made solutions for its customers. MetalDesigner produces electromechanical and mechatronic devices, of its own design and for third parties, in particular in the civil and industrial light carpentry sector. It offers 3D design, prototyping and idea engineering services; its technical section uses complete CAM solutions integrated with the most modern 3D design systems.*

### Products

Indoor furniture  
Outdoor furniture

### Contacts

MetalDesigner S.r.l.  
Via Torino 6  
10088, Volpiano (TO), Italy  
www.metaldesigner.it





## MTA GROUP S.R.L.

Dormiria是一家位于Leini（靠近都灵）的意大利床垫工厂。  
Dormiria品牌诞生的初衷很明确：要研究和提供满足每个人良好休息需求的解决方案。他们保证为您提供安心的睡眠和完美的清醒体验！

他们的床垫都经过医疗器械认证，所有系列都全面保证，100%意大利制造等更多特点，都是为了保证您能享受最佳的睡眠体验。

### 产品线

床垫

### 荣誉资质

Oeko TEX 标准

### 联系方式

公司：MTA Group s.r.l.  
地址：Strada Fornacino 91, 10040, Leini (TO), Italy  
网址：www.materassidormiria.it

*Dormiria is an Italian mattress factory, based in Leini (close to Turin). The Dormiria brand was born with a specific purpose: to research and offer solutions for every need for a good rest. They guarantee you peaceful sleeps and perfect awakenings!*

*Mattresses certified as medical devices, full guarantee on all their lines, 100% Italian production and much more to guarantee you the best sleep experience.*

### Products

Mattresses

### Recognitions

Oeko TEX Standard

### Contacts

MTA Group S.r.l.  
Strada Fornacino 91  
10040, Leini (TO), Italy  
www.materassidormiria.it





## NUOVA OSMO S.R.L.

对纯粹的意大利制造风格的科技和设计的热情在2015年达到了高潮，创造出了Graffio。创始人最初的梦想被一个由创意专业人士和工匠组成的专家团队热情接纳，他们的目标是在形状和材料方面创造出独一无二的淋浴产品。

Graffio团队位于皮埃蒙特制造区的西北部，坐落在令人向往的奥尔塔湖风景区。他们创造的浴室配件和淋浴室内物品散发出永恒的吸引力，其中，通过现代工艺技术，意大利制造风格的坚韧和勇气得以延续，无缝地将对细节的严谨关注和环保可持续性结合起来。

### 产品线

浴室&卫生洁具

### 荣誉资质

ISO-9001 认证资格  
IQNET 认证资格100%意大利制造认证

### 联系方式

公司: Nuova Osmo s.r.l.  
地址: Via Dr. Bellosta 46, 28017, San Maurizio d' Opaglio (NO), Italy  
网址: [www.graffiodesign.it/en/](http://www.graffiodesign.it/en/)

*A passion for technology and design in pure Made in Italy style culminated in the creation of Graffio, in 2015. The founder's original dream was enthusiastically embraced by an expert team of creative professionals and artisans, united by the aim of creating original shower products, both in terms of shape and materials.*

*Set in the suggestive landscape of Lake Orta, in the North-Western Piedmont manufacturing district, the Graffio team creates bathroom fittings and items for shower interiors which exude timeless allure, in which the strength and courage of Made in Italy style lives on through modern artisanship, seamlessly combining rigorous attention to details and eco-sustainability.*

### Products

Bathroom & sanitaryware

### Recognitions

ISO-9001 certified  
IQNET certified  
100% Made in Italy certified

### Contacts

Nuova Osmo S.r.l., Via Dr. Bellosta 46  
28017, San Maurizio d'Opaglio (NO), Italy, [www.graffiodesign.it/en/](http://www.graffiodesign.it/en/)



## PININFARINA ARCHITECTURE

作为意大利风格的全球象征，Pininfarina以其无与伦比的能力创造出基于科技与美学价值的永恒作品而闻名。Pininfarina总部位于意大利，并在全球各地设有办公室，其设计范围包括交通设计、工业设计、建筑/室内设计以及汽车设计。

Pininfarina Architecture最近的建筑和室内设计项目遍布世界各地，如土耳其（伊斯坦布尔新机场的空中交通管制塔），美国（迈阿密的1100 Millecento豪华公寓），巴西（Cyrela、Vitra 和 Yachthouse，以及 Balneario Camboriu的豪华双塔），以及意大利（都灵的尤文图斯体育场）。

### 设计服务

数字服务设计  
产品设计  
策展设计  
室内设计  
建筑设计  
总体规划

对创新和极致完美的设计方案的追求是其一直秉持的服务理念。

### 联系方式

网址: <https://pininfarina.it/it/architecture-it/>  
电话: +39 011 9438111  
地址: Via Nazionale, 30, 10020 Cambiano (TO)

*A global icon of Italian style, Pininfarina is recognized for its unparalleled ability to create timeless works based on its values of Tech and Beauty. Pininfarina is based in Italy, and has offices worldwide, with a design scope that includes transportation, industrial design, architecture/interiors, and automotive design.*

*Pininfarina Architecture's most recent architecture and interior design projects span over geographical locations such as Turkey (the Istanbul New Airport Air Traffic Control Tower), The United States (the 1100 Millecento luxury condo in Miami), Brazil (Cyrela, Vitra and Yachthouse, as well as the luxury twin towers in Balneario Camboriu), and Italy (the Juventus Stadium in Turin).*

### Services

Digital service design  
Product design  
Exhibition design  
Interior design  
Architecture  
Master planning

*Pininfarina's pursuit of innovative and bespoke design solutions is pivotal to its methodology.*

### Contacts

[www.pininfarina.it/it/architecture-it/](https://pininfarina.it/it/architecture-it/)  
+39 011 9438111  
Via Nazionale, 30, 10020 Cambiano (TO)



## PLASTIZ

Plastiz 成立于 2021 年，诞生于都灵，源于对设计的热情以及应对塑料垃圾危机的愿望。我们的团队开发了一种创新工艺，重新构想了传统塑料加工技术，尽可能多地将废弃塑料转化为一种紧密、耐用且坚固的材料。自创立以来，我们已经再生利用了超过 10 吨塑料，与生产原生塑料相比，温室气体排放量减少了 50%。

*Plastiz was founded in Turin in 2021, born from a passion for design and a desire to tackle the plastic waste crisis. Our team developed an innovative process that reimagines traditional plastic-working techniques, turning as much waste as possible into a compact, durable, and resilient material. Since our launch, we have regenerated over 10 tons of plastic, cutting greenhouse gas emissions by 50% compared to the production of virgin plastic.*

### 产品线

面板：大理石、像素、玻璃

#### Products

*Paneles: Marble, Pixel, Glass*

### 联系方式

网址: [www.plastiz.it](http://www.plastiz.it)  
电话: +39 351 625 9782  
地址: Piazza Teresa Noce, 17d, Torino TO

#### Contacts

*Piazza Teresa Noce, 17d, Torino TO,  
+39 351 625 9782, [www.plastiz.it](http://www.plastiz.it)*





## QUADRILATERO S.R.L.

Quadrilatero是由Stefano、Filippo、Gianni和Davide在都灵共同创立的全新设计品牌。它源于寻找和传达一种新的理解环境、生活在其中以及尊重其特征的方式，并在其中引入具有重要意义的家具元素的需求。

我们的产品工艺精良，可以定制个性化的系列，而材料的纯净度则随着时间的推移得以展现，将原本的瑕疵转化为特色元素。

Quadrilatero的设计产品所具有的美学价值，源自于通过巧妙而精致的装配系统实现的简洁形状的深远影响力。

### 产品线

室内家具  
户外家具  
家具配件  
灯具  
浴室和卫生洁具

### 联系方式

公司：Quadrilatero s.r.l.  
地址：Via Catania 29, 10153, Torino(TO), Italy  
网址：www.quadrilatero.com

*Quadrilatero is a new design brand founded in Turin by Stefano, Filippo, Gianni and Davide. It stems from the need to search for and communicate a new way of interpreting environments, of living them, of respecting their characteristics, introducing significant furnishing elements.*

*The craftsmanship of the productions lends itself to the personalization of the collections and the purity of the materials is expressed over time, transforming imperfections into distinctive elements.*

*The aesthetic value of Quadrilatero objects comes from the evocative power of simple shapes obtained by means of ingenious and extremely refined assembly systems.*

### Products

Indoor furniture  
Outdoor furniture  
Furnishing accessories  
Lighting  
Bathroom & sanitaryware

### Contacts

Quadrilatero S.r.l.  
Via Catania 29  
10153, Torino (TO), Italy  
www.quadrilatero.com





## RUBINETTERIA GIULINI GIOVANNI S.R.L.

自从Giovanni Giulini和Graziella Godio在1966年创立Giulini G. Rubinetteria以来，我们一直遵循四大核心原则：品质、创造力、创新和热情。正是这些原则让我们能够准确解读不断变化的市场，并引领我们设计出独具特色的浴室和厨房的水龙头及配件系列。

这种持续不变的承诺，使得我们的公司逐渐成为了国际级的产业实体，同时我们也始终深深地扎根于自己的诞生之地：位于美丽的奥塔湖旁的Pogno村庄，湖心的圣朱利奥岛。这些地方都充满了迷人的魅力和令人回味的场景，也是国内外最重要的水龙头和配件生产基地的一部分。

### 产品线

浴室&卫生洁具

### 荣誉资质

ISO 9001:2008 认证  
100%意大利制造认证IT01  
意大利制造100%认证

### 联系方式

公司：Rubinetteria Giulini Giovanni s.r.l.  
地址：Via Salvo D'Acquisto 22, 28076, Pogno (NO), Italy  
网址：[www.giulini.it/en/](http://www.giulini.it/en/)

*Ever since it was founded by Giovanni Giulini and Graziella Godio in 1966, Giulini G. Rubinetteria has been guided by four fundamental principles: quality, creativity, innovation, passion. The same principles with which we interpret a constantly evolving market and by which we let ourselves be guided when we shape our collections of taps and accessories for bathroom and kitchen.*

*A constant commitment, which has led the company to become an industrial reality of international level, while remaining strongly rooted in the places that saw it born: the village of Pogno, near the wonderful Lake Orta, at the center of which is set the Island of San Giulio. Fascinating, evocative places and part of the most important national and international production basin of taps and fittings.*

### Products

Bathroom & sanitaryware

### Recognitions

ISO 9001:2008 Certificate  
Certificazione 100% Made in Italy IT01  
Made in Italy 100% Certificate

### Contacts

Rubinetteria Giulini Giovanni s.r.l.  
Via Salvo D'Acquisto 22, 28076, Pogno (NO), Italy, [www.giulini.it/en/](http://www.giulini.it/en/)



## SEA & SYMPHONY S.R.L.

Sea & Symphony是意大利生产自动升降机、支架和电视挂架的行业领导者。

Sea & Symphony公司成立于1995年的都灵，最初在海洋市场中迈出了第一步，这是一个娱乐系统成为游艇家具装饰的必要配套的行业。我们在行业中赢得了最佳声誉后，我们开始向家具世界拓展我们的业务范围。

我们的产品被设计出来，以完美地满足实用功能和审美需求。它们代表了一种具有极高景观效果的战略性机会，尤其在小空间中，每一个角落都成为了必不可少的部分。

### 产品线

家具配件  
自动升降机  
支架  
电视架

### 荣誉资质

ISO 9001, CE

### 联系方式

公司：Sea & Symphony s.r.l.  
地址：Strada Carignano 46/2, 10024, Moncalieri (TO), Italy  
网址：[www.seaandsymphony.com/en/](http://www.seaandsymphony.com/en/)

*Sea & Symphony is the Italian leader in the production of automated lifts, brackets and TV mounts.*

*Established in 1995 in Turin, Sea and Symphony moved its first steps in the marine market, a sector where the entertainment system is the corollary of boats and yachts furnishings. Then, once we achieved the best reputation in the industry, we pushed our boundaries in the furniture world. Our items are designed to perfectly meet practical-functional and aesthetic needs. They represent a strategic opportunity with a highly scenic effect, particularly in little spaces, where every corner becomes essential.*

### Products

*Furnishing accessories*

### Recognitions

*ISO 9001, CE*

### Contacts

*Sea & Symphony s.r.l.  
Strada Carignano 46/2  
10024, Moncalieri (TO), Italy  
[www.seaandsymphony.com/en/](http://www.seaandsymphony.com/en/)*



## SKIN NEW DESIGN CIFFO x SARGOMMA

SKIN是室内和室外设计领域的一种颠覆性变革。它源自设计、视觉艺术和工程之间目标导向的对话，通过加强人与环境之间的关系，为建筑物赋予了新的"皮肤"。

著名的意大利艺术家Alessandro Ciffo，他将硅胶作为新的"软大理石"(XXI Silico)引入到全球的艺术画廊、私人收藏以及许多家庭中，与意大利顶级橡胶和塑料组件制造商Sargomma进行了深入交流，共享他们在工业和艺术方面的专业知识。

与像树脂和塑料这样紧凑和坚硬的材料不同，硅胶提供了灵活性和柔软性，最终赋予了一种人性化的触感，就像皮肤一样。它与人建立了连接，让人们不仅仅成为产品的观众，更是他们周围和为他们打造的景观中的积极参与者。

### 产品线

室内家具  
户外家具

### 联系方式

公司: Sargomma s.r.l.  
地址: Via G.B. Feroggio 41, 10151, Torino (TO), Italy  
网址: [www.skinnewdesign.com](http://www.skinnewdesign.com)

*Skin is a disruptive movement in the interior and exterior design sector. Born from a purpose-driven dialogue between design, visual arts and engineering, it sews a new skin on buildings by enhancing the relationship between humans and location.*

*The renowned Italian artist Alessandro Ciffo, who introduced silicone as the new 'soft marble' (XXI Silico) to art galleries, private collections and several homes worldwide, met with Sargomma, an Italian tier 1 rubber and plastic components' manufacturer, to exchange their expertise in industry and arts.*

*Silicone, unlike compact and solid materials such as resin and plastics, provides flexibility, softness and, ultimately, a human touch, like a skin. It establishes a connection with people, who do not merely act as the product's audience but as active participants in the scenic backdrop built around them and for them.*

### Products

Indoor furniture  
Outdoor furniture

### Contacts

Sargomma s.r.l.  
Via G.B. Feroggio 41, 10151, Torino (TO), Italy, [www.skinnewdesign.com](http://www.skinnewdesign.com)





# TESTATONDA

Testatonda是一个由Nicolò Corigliano、Matteo Minello、Alessandro Scialdone和Valter Cagna组成的设计团队。他们从优雅的直观性和多样性的形状中获取灵感，他们在间隙和不平均的细节中发现可能的美的准则。

Testatonda的名字启发自圆头钉，这是铁和木之间的连接元素，完美地融合了团队中不同的个性。其团队成员具备从建筑到设计，甚至人类学和社会学的跨领域技能。这不仅是多元化材料的融合，更是各种独特个性之间的结合，这些个性由特定的教育和职业路径所定义。

## 产品线

户外家具  
家具配件  
室内家具  
桌子  
椅子  
屏风

## 联系方式

公司: TestaTonda  
地址: Via Cogne 11C, 10155, Torino (TO), Italy  
网址: [www.testa-tonda.com](http://www.testa-tonda.com)

*Testatonda is a design group formed by Nicolò Corigliano, Matteo Minello, Alessandro Scialdone and Valter Cagna. They draw inspiration from the intuitiveness of elegance and the plurality of its shapes, identifying the criteria of any possible beauty in gaps and uneven details.*

*The name, Testatonda, is inspired by the round-headed nail, an element of conjunction between the world of iron and that of wood, a perfect synthesis of the different souls that make up the group, whose members possess transversal skills ranging from architecture to design, up to anthropology and sociology. A union not only between heterogeneous materials but also between unique individualities defined by specific training and professional paths.*

## Products

Outdoor furniture  
Furnishing accessories  
Indoor furniture

## Contacts

TestaTonda  
Via Cogne 11C  
10155, Torino (TO), Italy  
[www.testa-tonda.com](http://www.testa-tonda.com)



## THALIA INDUSTRIAL DESIGN

Thalia是一家具有独特特性的工匠企业，致力于研究设计，规划，并为其客户创造最佳的解决方案。它独特且多面的风格使Thalia在开发量身定制的项目方面具有高度的灵活性，满足客户的需求和愿望，其家居产品与环境紧密相连。在家居装饰领域积累的丰富经验，使其能够为客户提供精致和创新的设计理念，创造适用于家庭、办公室、商店和店铺的现代设计方案。

### 产品线

墙面装饰  
照明  
浴室和卫生洁具  
餐具  
室内家具  
户外家具  
家具配件  
窗户&门

### 荣誉资质

获得AUTODESK授权培训中心的认证  
获得米兰沃尔塔学院室内设计的认证

### 联系方式

公司：Thalia Industrial Design by Morabito Roberto S.A.S.,  
地址：Via Torino, 12 – Località Palazzo Grosso, 10070, Vauda Canavese (TO), Italy  
网址：www.thaliaid.it/en/

*Thalia is an artisan company with unique characteristics aimed at studying design, planning and creating the best solutions for its customers.*

*Its original and multifaceted style distinguishes Thalia for its versatility in developing tailor-made projects that meet the needs and desires of its customers with furnishings intimately linked to the environments.*

*Its consolidated experience gained in the field of home furnishings allows it to offer its customers sophisticated and innovative design ideas by creating modern design solutions for home, office, store and shop.*

### Products

Wall covering  
Lighting  
Bathroom & sanitaryware  
Dinnerware, beverageware & cutlery  
Indoor furniture  
Outdoor furniture  
Furnishing accessories

### Recognitions

Certified by Authorized Training Center di AUTODESK  
Qualify for INTERIOR DESIGN at the Volta Institute in Milan

### Contacts

Thalia Industrial Design by Morabito Roberto S.A.S., Via Torino, 12 –Località Palazzo Grosso, 10070, Vauda Canavese (TO), Italy. www.thaliaid.it/en/



# VISTADIPUNTO

Vistadipunto® 家具配件以美的名义被创造，旨在为人们带来一种超越纯粹功能性的感官体验。当你观察Vistadipunto® 家具的变形图像时，你感受到的不仅仅是视觉上的幸福感，更是一种独特的感知现实的方式。要欣赏这些图像的美，你需要绕着物品走动，并在找到正确的视角时停下来欣赏；你需要有意识地沉浸在这一刻，与你正在经历的时刻和自己的内心达到和谐，就如同英语中所说的“正念”状态。

## 产品线

墙纸  
室内装饰

## 荣誉资质

皮埃蒙特MIP认证

## 联系方式

地址：Via Malta, 32D, 10141, Torino, Italy  
网址：www.vistadipunto.com

*Vistadipunto® furnishing accessories are created in the name of beauty, to be experienced as a sensorial experience that goes beyond the mere functionality. The feeling of well-being that is perceived by observing the anamorphic images of Vistadipunto® furnitures goes beyond just the visualization but fits into a different way of perceiving reality. To enjoy the beauty of the images you need to get around the object and pause for a few moments when you find the correct point of you, your point of view; you need to live the moment consciously, getting in tune with the moment you live and with yourself, with "mindfulness" as they say in English.*

### Products

Wall panels, Indoor furnitures

### Recognitions

MIP Piemonte

### Contacts

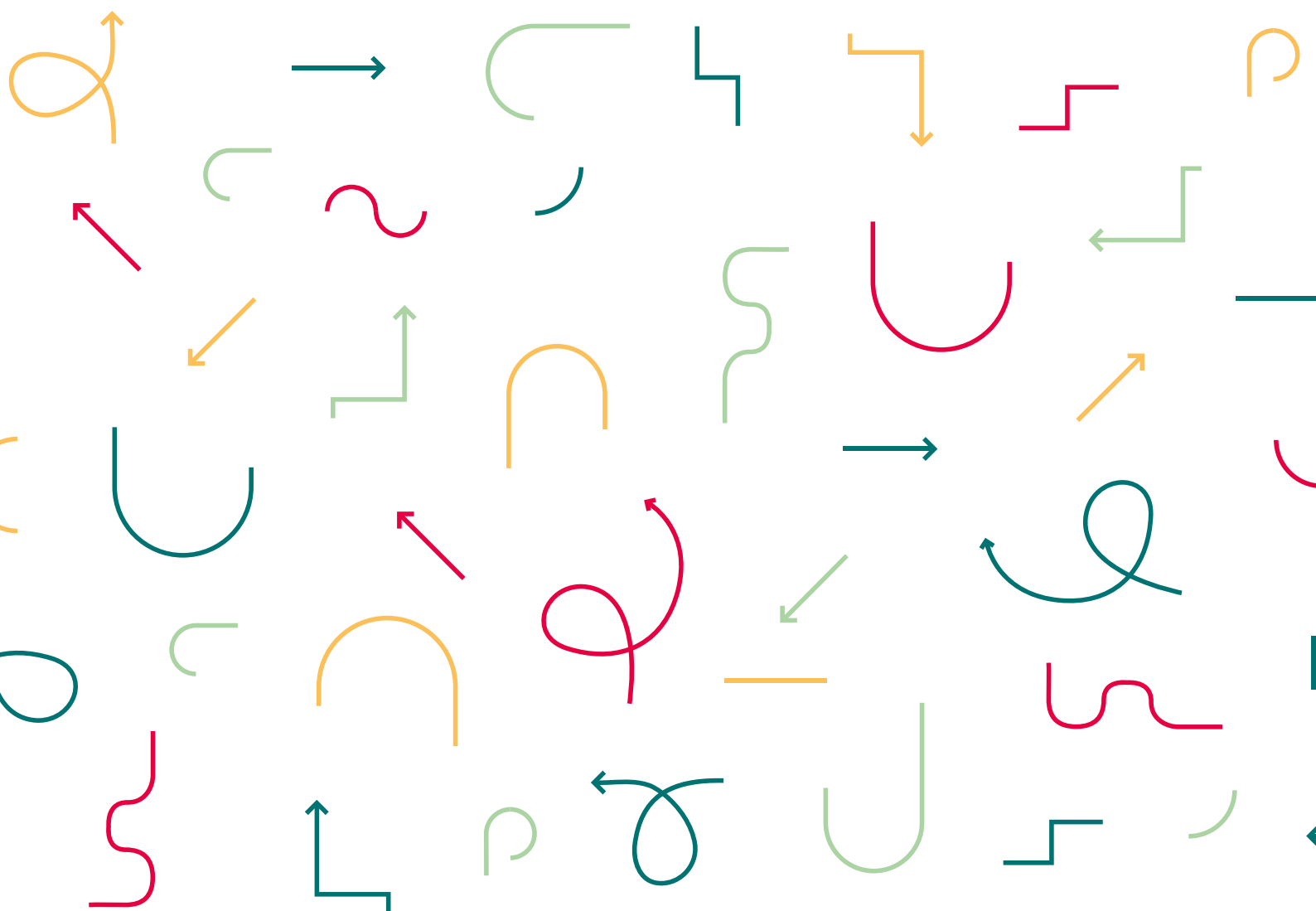
Via Malta, 32D, 10141, Torino, Italy  
www.vistadipunto.com



03

插件式住宅

Plug-in House



# 搭配插件系统的住宅模型

## The Model Home as a Plug-in System

*Plug in house challenges old conventions of standard homes and fixed footprints to empower real estate developer to provide more flexible, healthy and liveable way of living to their inhabitants. The home spaces are conceived as movable and interchangeable plug-in that can be reconfigured in many different ways and adapted to several lifestyle patterns and landscapes.*

*The architectural strategy is to devise as many different ways as possible to reconfigure an apartment on the basis of different geographical contexts and people lifestyles. To achieve this, we imagine to design adaptable partition and furniture 'plugin-based' system, which allows real estate developers to answer the needs of different market niches.*

*The flexibility lies in the fact that each element can work in different configurations, and that the resident can chose an individual configuration of plugins based on a catalogue of different spaces. Each element is devised on a grid which means that no matter which elements the homeowner chooses, and no matter how they arrange them inside their apartment, the modules will work together.*

*Houses are not just assemblages of individual rooms but intricate patterns of organised space, governed by rules and conventions about the size and configuration of rooms, which domestic activities go together, how the interior should be decorated and furnished and what kinds of household object are appropriate in each setting, how family members relate to one another in different spaces, and how and where guests should be received and entertained in the home.*

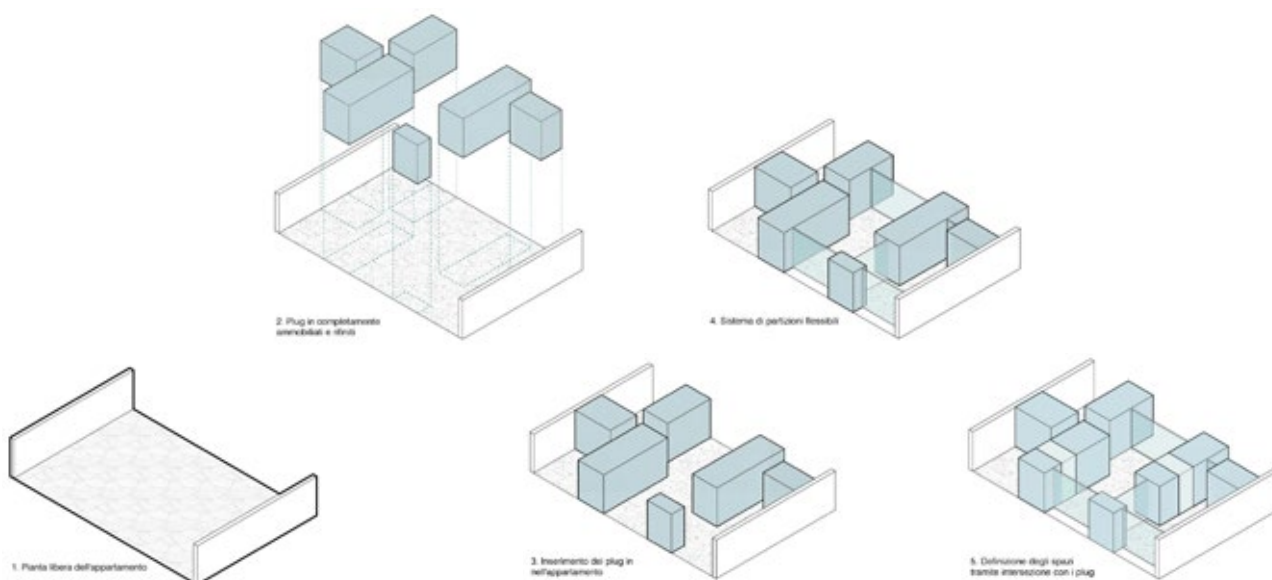
*Kitchen 厨房*  
*Bathroom 卫生间*  
*Storage 储物间*  
**+**  
*Creative decoration*  
*创意装饰*  
**=**  
**Infinite apartment configurations**  
**无限的住宅组合**

插件式住宅挑战了传统住宅和固定户型的旧有规则，赋予房地产开发商为住户提供更灵活、健康、适宜居住的生活方式的能力。家庭空间被设计为可移动和互换的插件，可以以多种不同的方式重新配置，适应各种生活方式和地域场景。

我们的设计策略是尽可能地组合许多不同的方式来根据不同的地理环境和人们的生活方式重新配置公寓。为了实现这一点，我们设想设计一种可适应的隔断和家具‘插件式’系统，这使得房地产开发商能够满足不同市场细分的需求。

灵活性体现在每个元素都可以在不同的方式组合，且居民可以根据自己的生活方式选择组合不同的模块组合。每个家装元素都设计在统一网格系统内，这意味着无论业主选择哪些元素，无论他们如何在他们的公寓内布置这些元素，模块都能协同工作。

房屋不仅仅是单个房间的组合，而是有规律和约定的组织空间的复杂模式，这些规则和约定规定了房间的大小和配置，哪些家庭活动可以一起进行，室内应该如何装饰和布置，以及每个环境中适合的家庭物品是什么，家庭成员在不同的空间中如何相互关联，以及如何在家中接待和招待客人。



## LIVEBLE

*A house that is tailored on people lifestyles, providing a whole series of spatial and material solution that improve the experience of daily activities.*

### 宜居

一种根据人们的生活方式量身定制的房屋，提供了一系列的空间和材料解决方案，以改善日常活动的体验

## FLEXIBLE

*A house that can change according to inhabitants life cycle or emerging needs*

### 灵活性

一种能够根据居民生命周期或新兴需求变化的住宅空间。

## HEALTHY

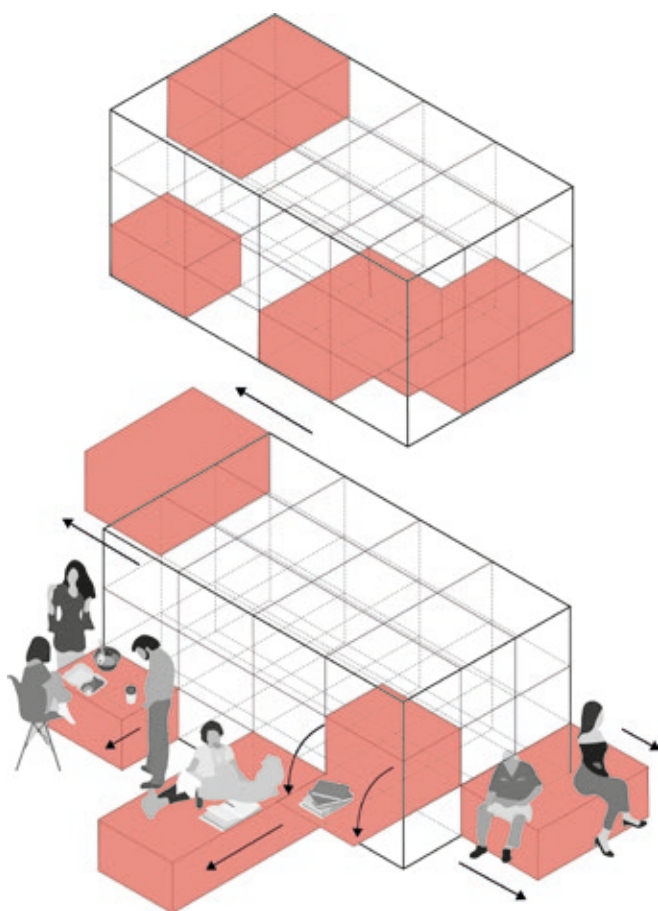
*A house that use spatial and material solutions to enhance the psychological and physical well being of its inhabitants*

### 健康

一种通过空间和物质材料解决方案关爱居民身心健康的住宅设计。

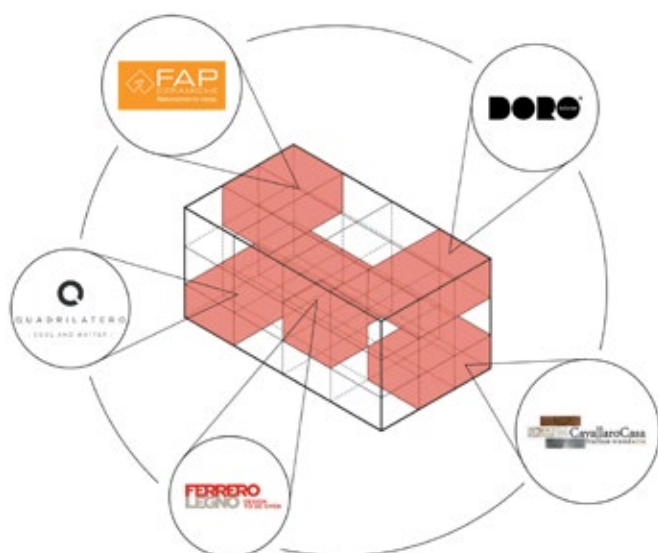






*As total furnishing units components of the house function as activators of domestic spaces, at any moment providing the most suitable setting for the drama that is about to take place, or is already in progress. The components are machines that generate relations between a space and a multitude of social events that it allows.*

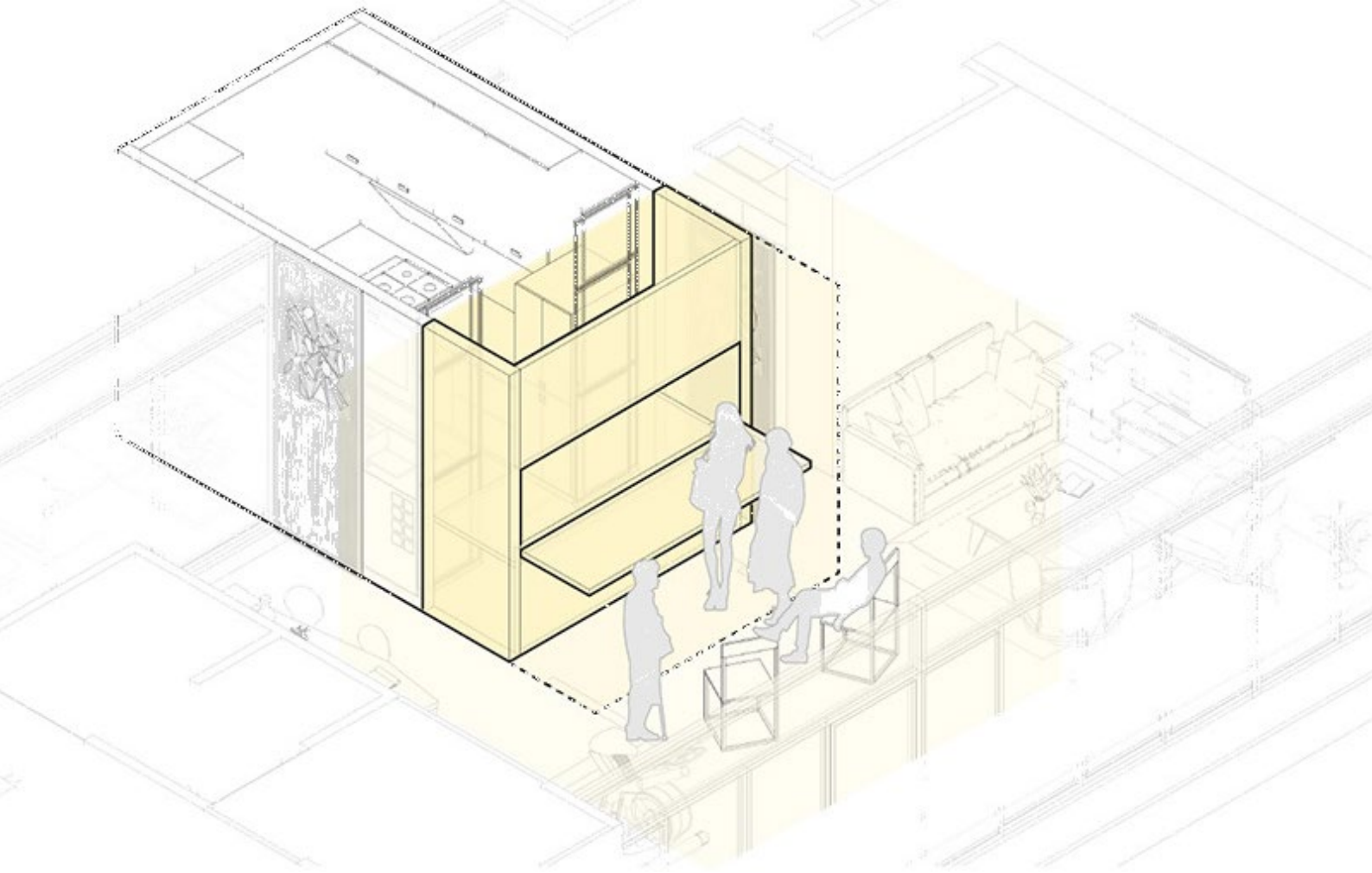
作为整体家具模块的组件，它们在任何时刻都能为即将发生或正在进行的生活场景提供最适合的设置，发挥了家庭空间的激活者的作用。这些模块组件就像机器，生成了空间和各种社交活动之间的关系。



*Total furnishing units function as collectors of Piedmontese products, as perfect, indissoluble formulas that can be repeated and adjusted in several contexts. These components are in the middle of standardization and customization, providing an answer to the need of personalization of domestic environment while enabling flexibility and easy-fast solutions.*

整体家居插件将皮埃蒙特家具产品整合成一个完美的，稳定的整体，能在多种居家情境中重复使用并调整适应。这些组件处于标准化和定制化的中间，既满足了对家庭环境个性化的需求，又提供了灵活且快速简便的解决方案。





# 厨房

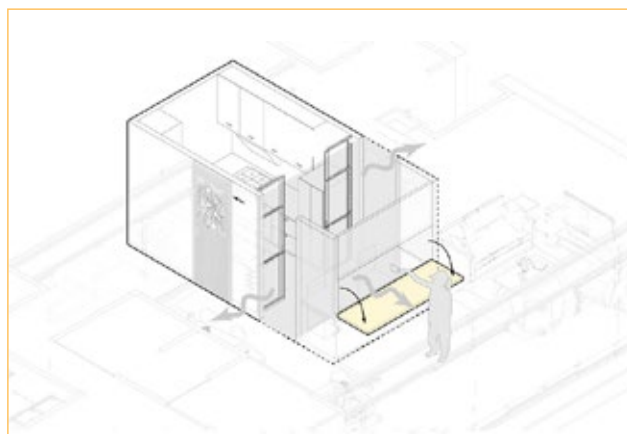
## Kitchen

*The objective is to have a flexible kitchen system that can be adapted to match with different spaces (living, dining, studio, terrace and so on). The system, characterized by a high degree of flexibility and sustainability, should be modular and extendable on different sides*

拥有一个灵活的厨房系统，可以适应不同空间（客厅、餐厅、工作室、露台等）的需要。该系统的特点是高度的灵活性和可持续性，模块化的设计，同时可以向其他的功能空间进行延伸与扩展。

*The heart of the daily life that fits the everyday needs.*

满足每天日常需求的住宅心脏。



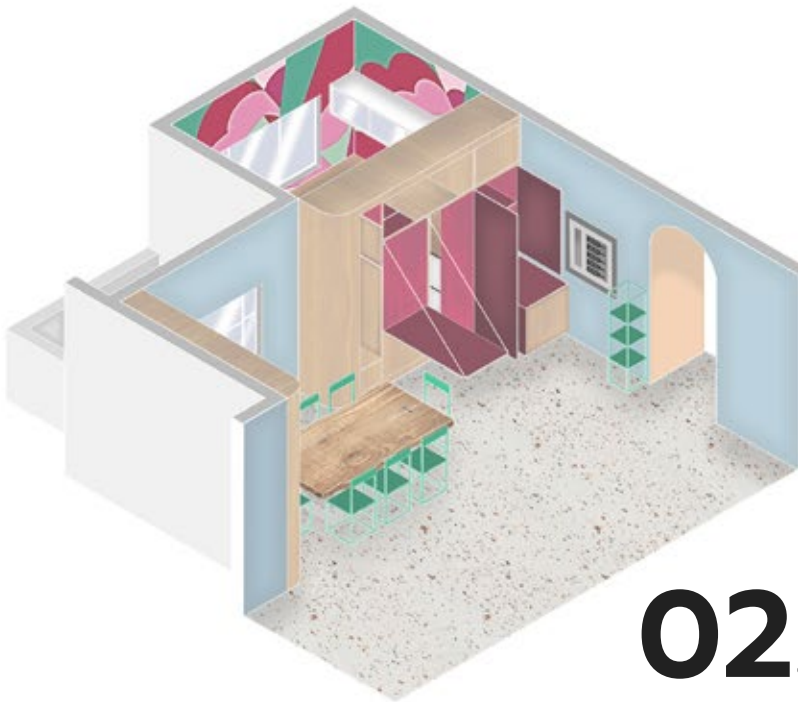




# 01.

*With the closed plug-in, the kitchen becomes a discrete space, transforming the space in front into a place used not only for meals but flexible for other functions, such as a temporary office. The room then takes on the importance and becomes the center of activities*

在插件关闭的状态下，厨房变成了一个独立的空间。厨房前面的空间不仅用于进餐，还能灵活转换应用于其他功能，例如临时办公空间。由于这个空间功能的转变，便具有了重要性，其他日常活动也会围绕这个空间展开。



# 02.

*In everyday activities, the plug-in opening elements allow for a flexible space that can be adapted to the different needs of everyday life. The space between the kitchen and living rooms becomes permeable depending on the time of day.*

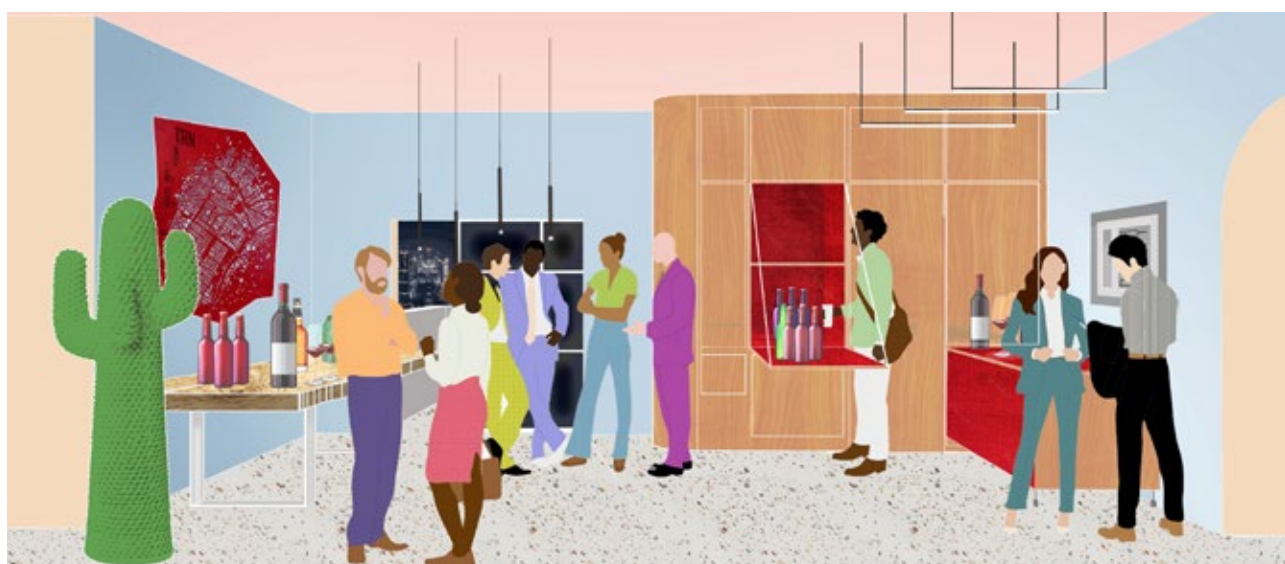
在日常活动中，厨房插件开放功能让空间使用更加灵活，来适应日常生活的不同需求。厨房和起居室之间的空间会根据一天的不同时段的家庭活动变得相互渗透。



# 03.

*The kitchen, while designed to be an enclosed space that is functional when needed, is carefully curated and decorated to create not only a pleasant environment, but a pleasant continuum with the space in front of it at the time it is opened.*

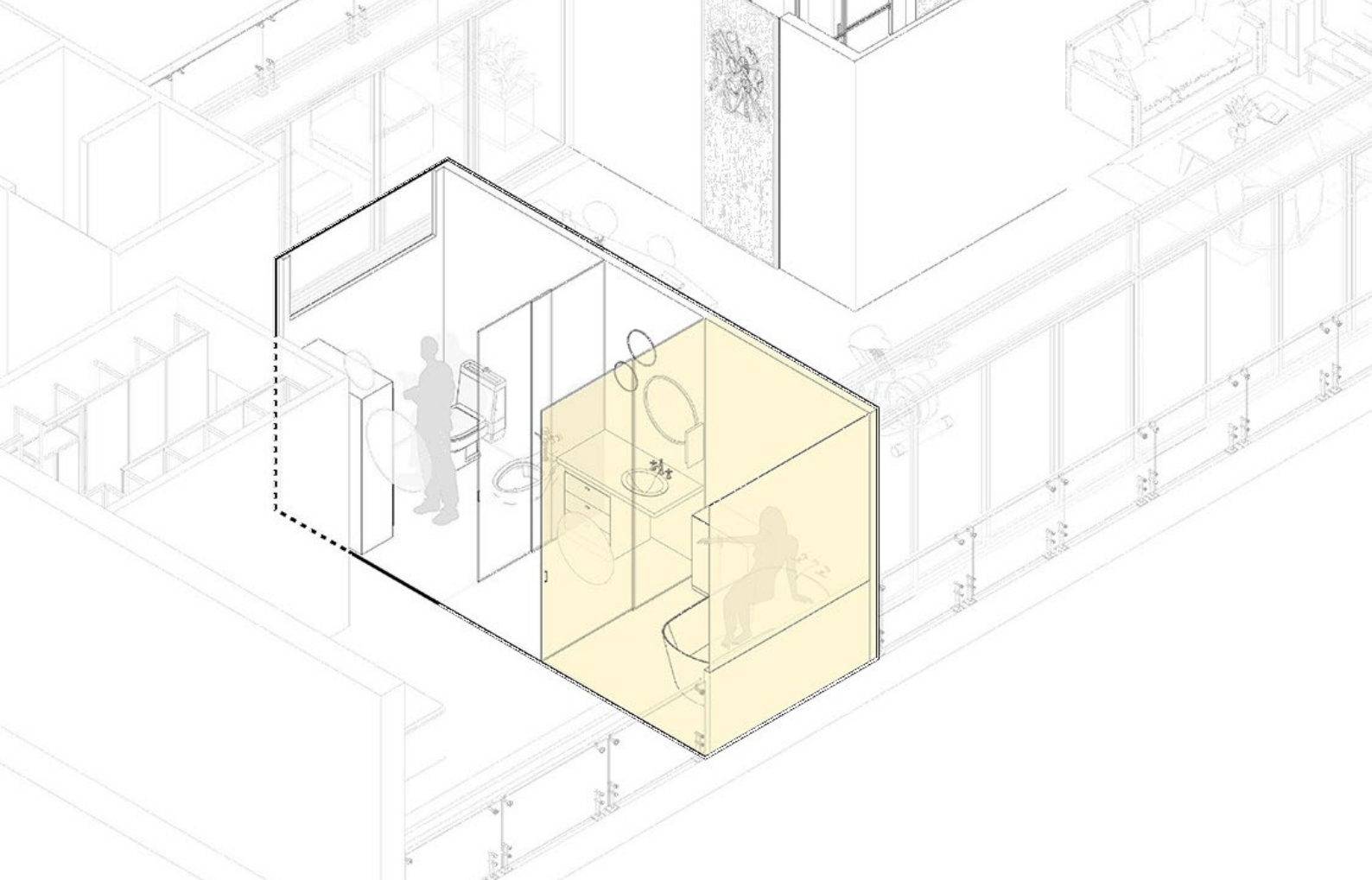
厨房被设计为一个功能齐全的完整的空间，但通过精心策划和设计，不仅创造了一个愉快烹饪的环境，而且在打开时可以与前面的空间形成了一个连续空间。"











# 卫生间

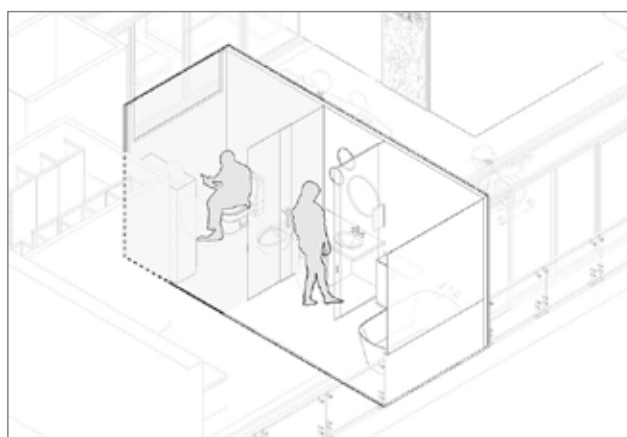
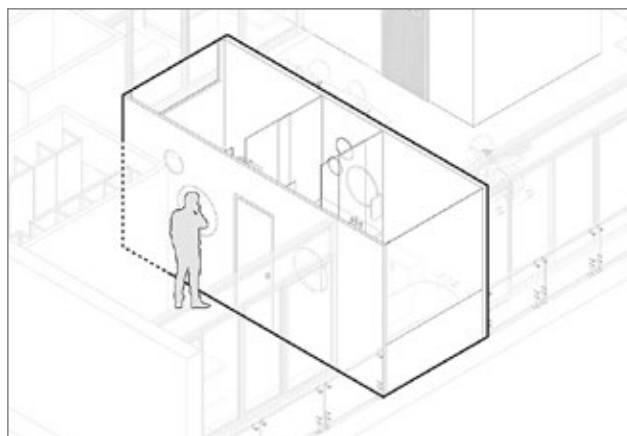
## Bathroom

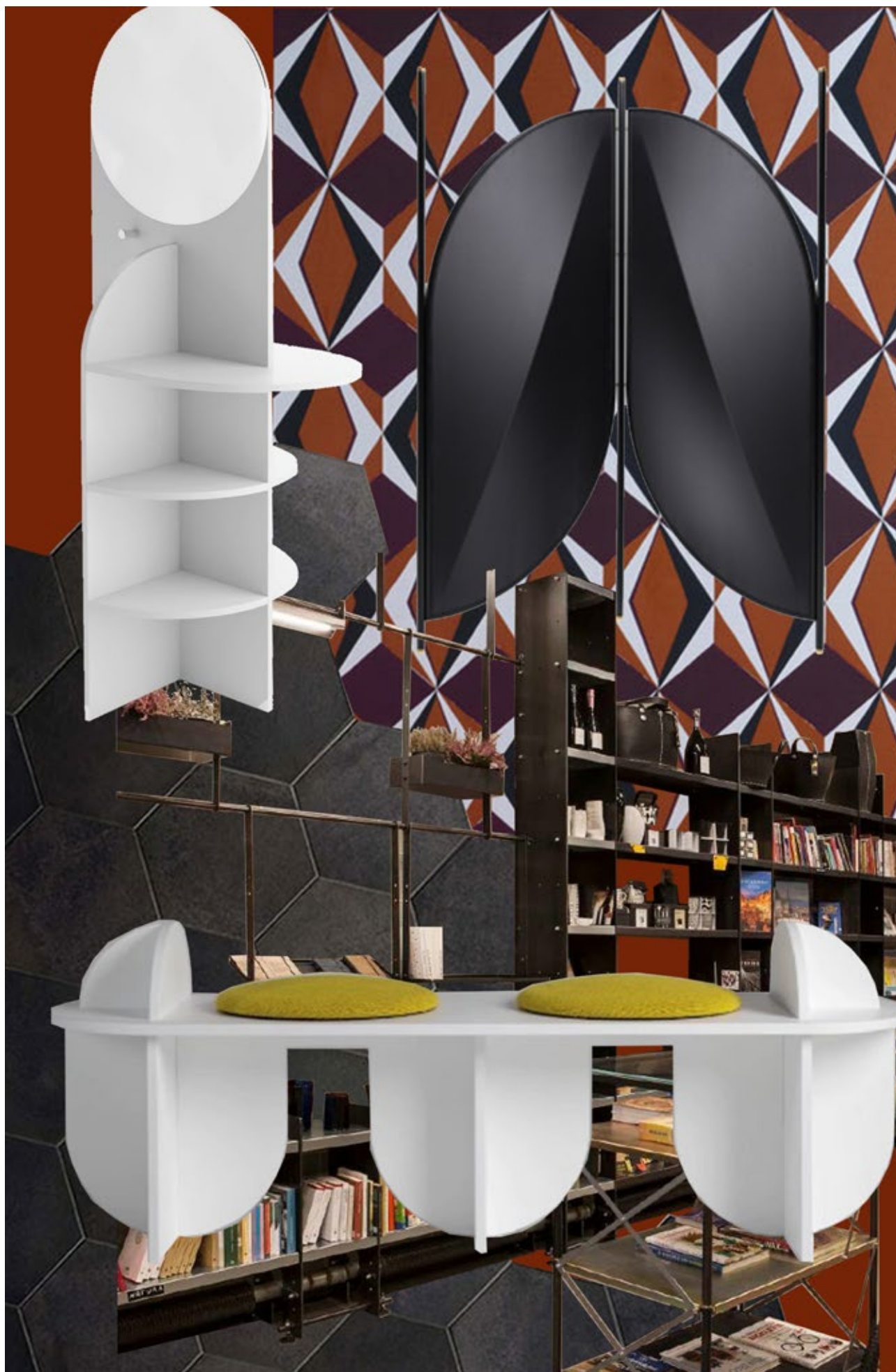
*The bathroom of the Piedmont Model Home features blurred thresholds that permits to share domestic uses with adjacent spaces, characterized by unique equipment and styles.*

皮埃蒙特住宅模型中的浴室设计模糊了不同空间的边界，日常使用过程中插件内的空间与相邻的空间相互渗透共享。匠心独具的卫浴设施和风格使其独具一格。

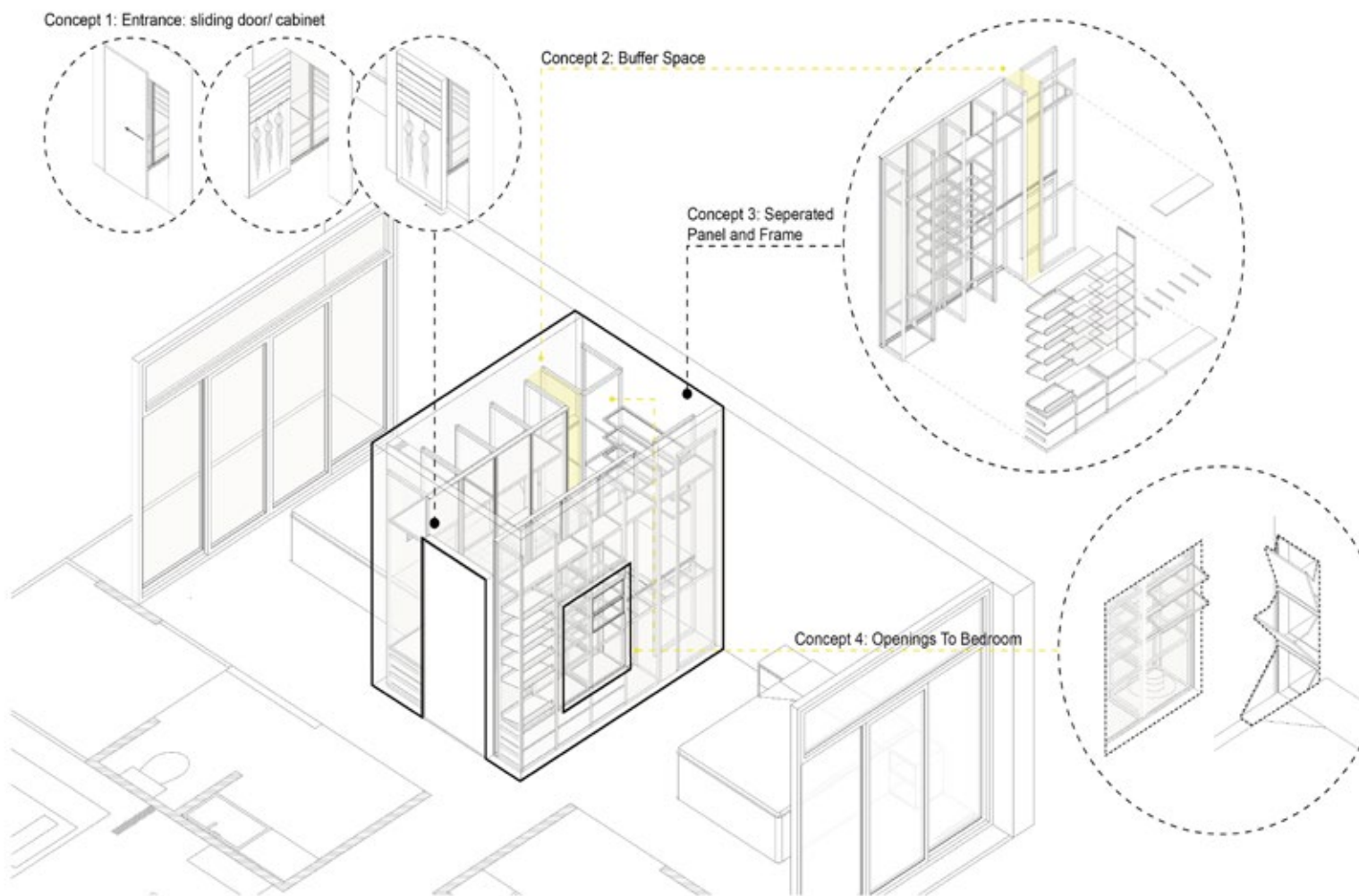
*A place to relax in a private setting where every detail is taken care of.*

无微不至的细节设计，让人放下疲惫，独享私人空间。









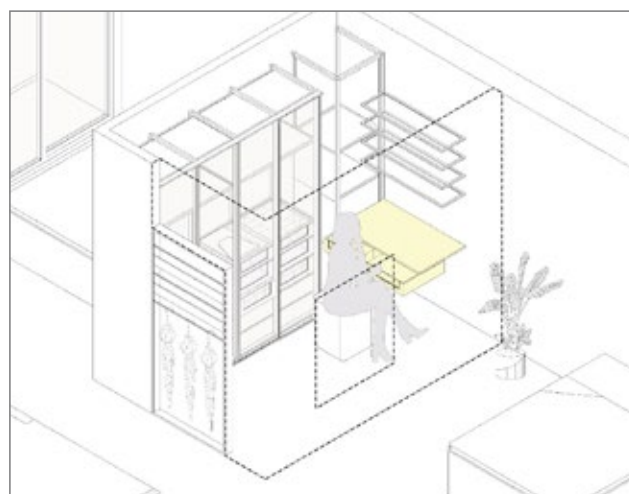
## 储藏间 Storage

*Flexibility and adaptability to different apartment sizes are only a few of the needs for a design that mutually integrate the space for sleeping with the one in which place clothing, objects and stuff. Storage is finally becoming a central part of the domestic environment.*

灵活性和适应不同公寓大小只是设计的需求之一，该设计将睡眠空间和放置服装、物品的空间互相整合。储物空间最终成为家居环境的核心部分。

*From a secondary space, storage becomes an abstention integrated into daily activities*

从辅助空间转变为融入日常活动的精致储藏空间



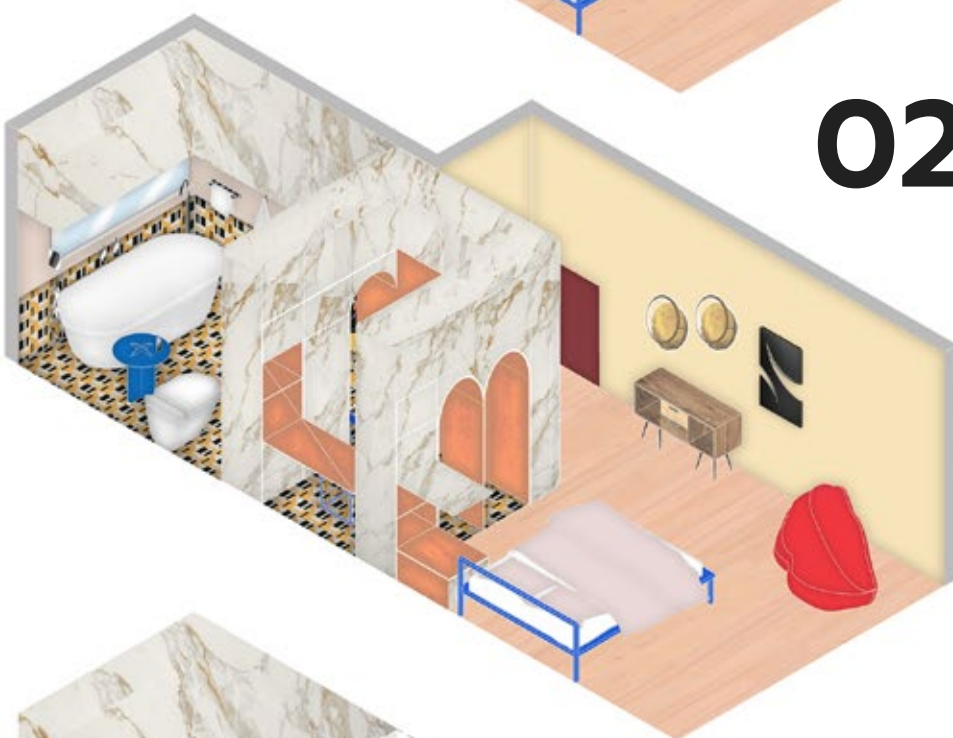




# 01.

*The enclosed plug in allows a clear division between room and bathroom space, allowing for the necessary privacy.*

封闭的插件让房间和浴室空间有了明确的划分，以保证所需的隐私。



# 02.

*The spaces can be opened or closed as needed. Storage can become a place of relaxation as well as a place of simple passage.*

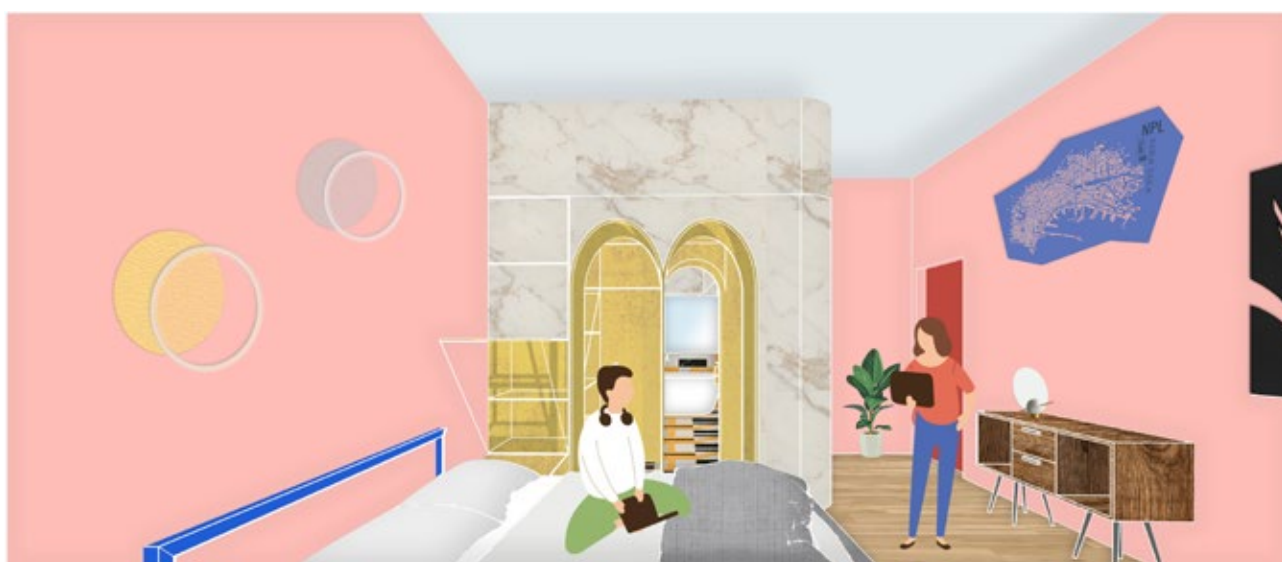
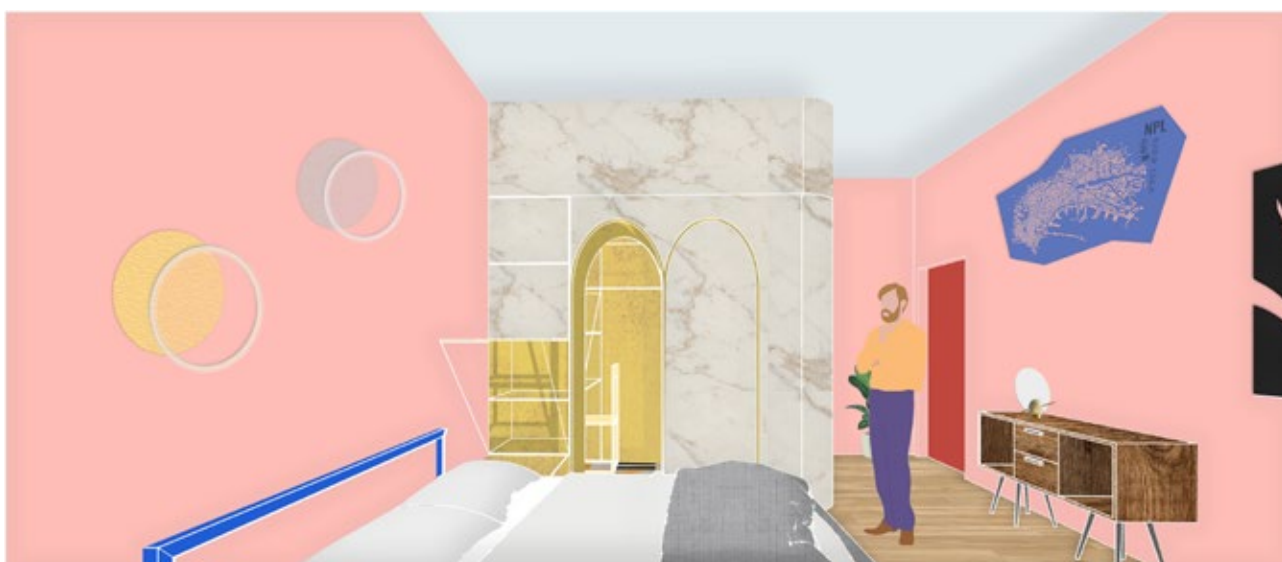
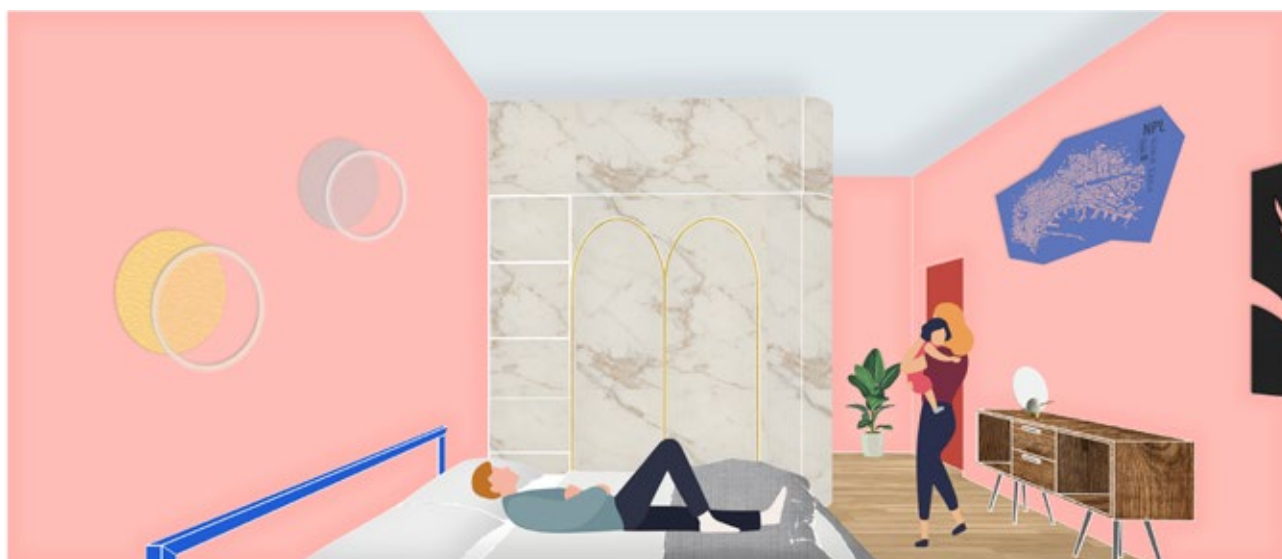
空间可以根据需要打开或关闭。储物空间可以成为一个放松的地方，也可以成为一个简单的过道。



# 03.

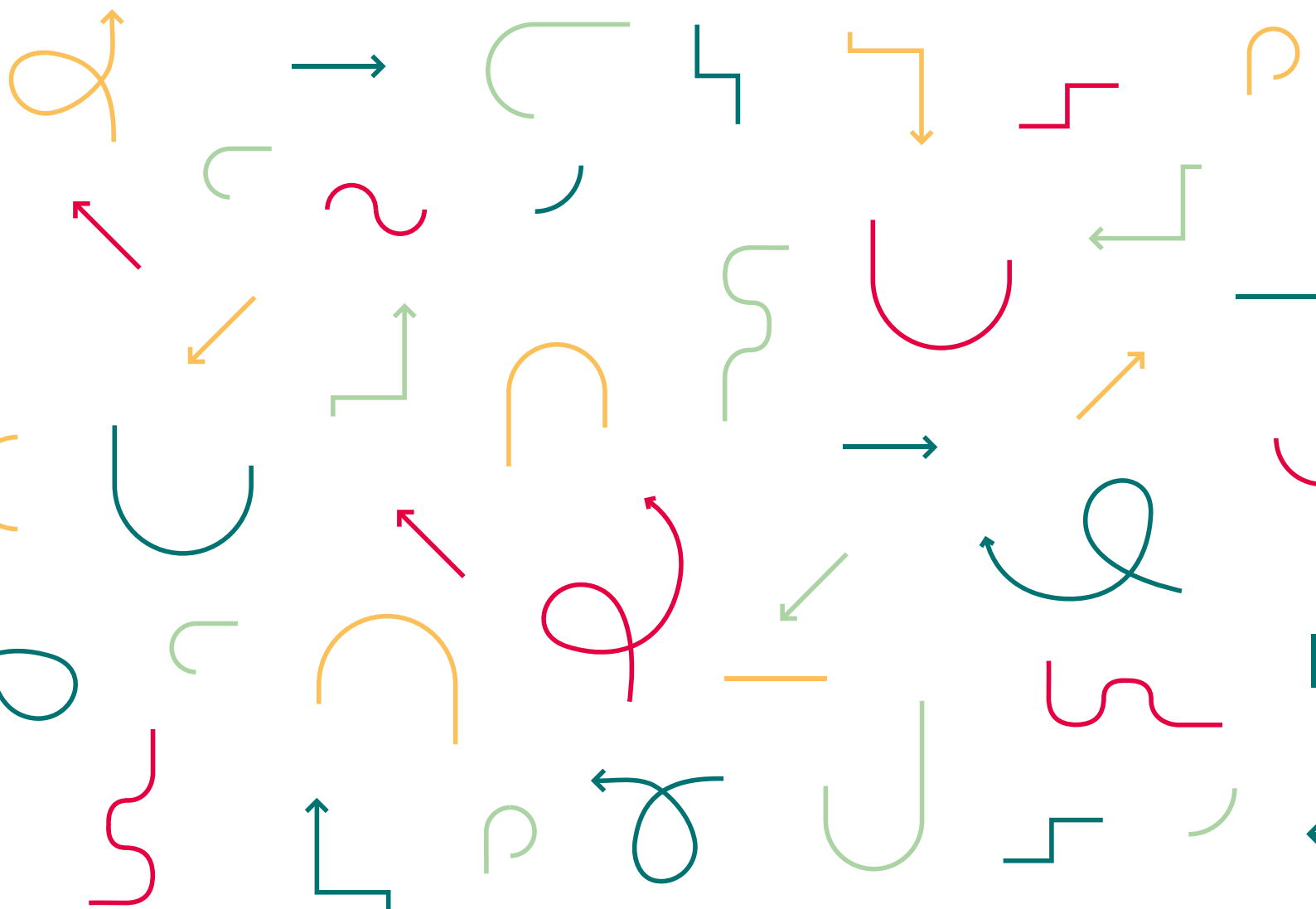
*The bathroom space is taken care of in every detail, so as to create an attractive and pleasant room to experience in one's privacy.*

浴室空间每个细节都考虑周到，以创造出一个私密的，放松的个人空间。”



产品名录

Products





# QV52红酒柜

## Quadro Vino QV52



EXPO



设计与技术的结合，创造出世界上第一个如同艺术画框一样红酒柜。这是一件独特设计的家具，可以优雅地展示收藏的佳酿，同时装点 and 丰富空间分为。Quadro Vino是世界上首个像艺术品一样可以挂在沙发上的红酒柜。

它能让最重要的聚会时刻变得更加特别，并激发意想不到的情绪氛围。

*Design and technology come together to bring to life the first refrigerated picture frame in the world. A piece of furniture of unique design which can elegantly display the most important bottles, while enhancing and enriching the space. Quadro Vino is the first refrigerator in the world that – just like a painting – can be hung over a sofa.*

*It can make the most extraordinary moments very special, and raise unexpected excitement.*



金属结构；铝质门框架/核心；  
木质/高压层压板/中密度纤维板  
门框。

### 尺寸规格

780cm x 780cm x 155cm

*Metal structure; Aluminum door  
structure/core;  
Wood/HPL/MDF door frame.*

### Size

780cm x 780cm x 155cm

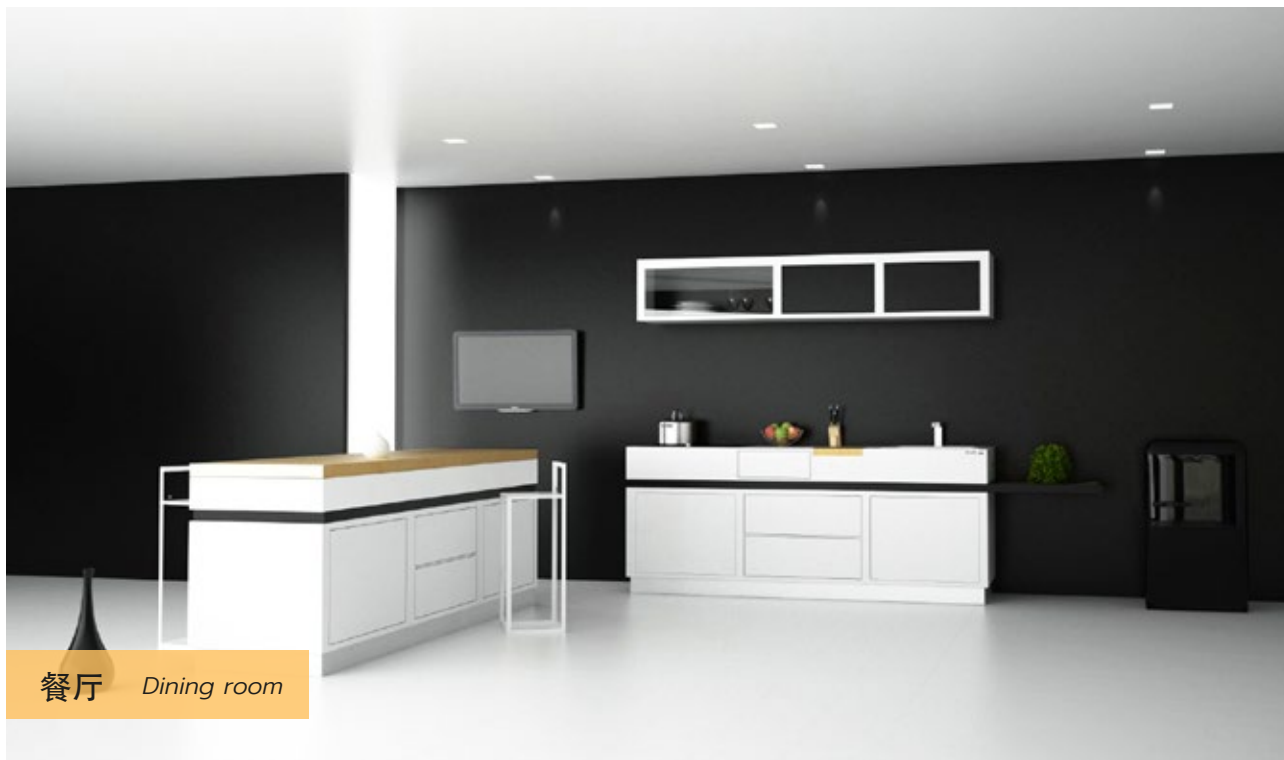


# 松霖家灵活厨房

## Solux Flex Kitchen



DORO Design



FLEX运用了多功能厨房的概念，使用简洁线条和自然元素相结合。最终产品呈现为一个形状简洁的白色厨房，集成了烹饪所需的各种物品，如砧板、垃圾箱、餐具容器，所有这些都隐藏在顶部一块整体木板之下。这块顶板通过滑动展示出厨房操作台面及其所有功能。集合厨房中间由一条黑色面板划分为两部分，上面放置的是小型炊具和餐具，下面是大型餐具和锅容器。



*FLEX is the concept of multi-functional kitchen, is the result of clean lines and natural elements. The result is a white simple shape kitchen with all the accessories such as cutting board, rubbish bin, dishes containers all covered by the main top wood panel that slides and unveil the kitchen top with all its features. The kitchen is divided with a black line-panel that serves to separate it in two parts, above are placed small cookware and cutlery and below the large dishes and pots containers.*

采用天然材料的白色、黑色和木质厨房

*Kitchen in natural materials in white, black and wood*

尺寸规格  
可定制化

**Size**  
*Dimensions addaptable according to needs.*

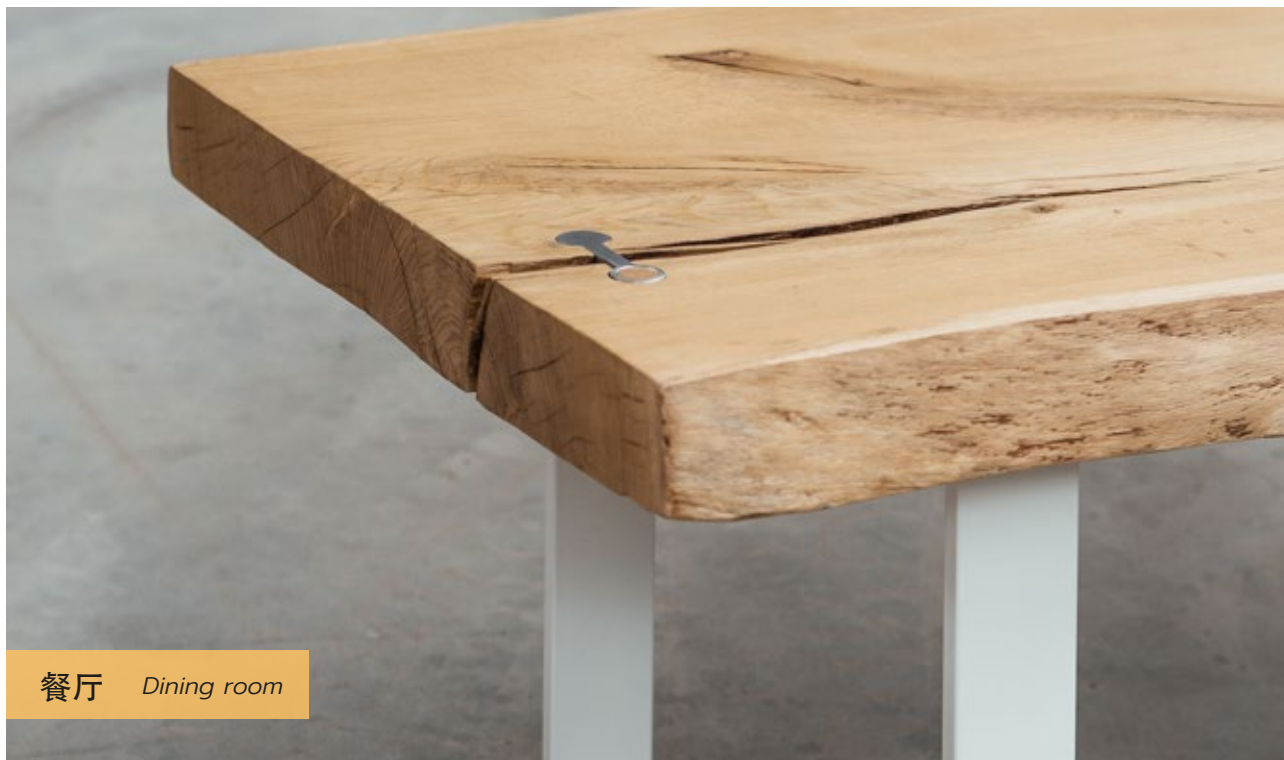


# Nàtür 餐桌

## Nàtür Table



DORO Design



餐厅 Dining room

大自然中没有任何东西是不完美的。不完美只是我们观察它的方式。”  
Nàtür是从法国橡木或法国橡木中诞生的手工艺品。  
这个名字源于皮埃蒙特方言，强调了家具的原生地。Nàtür Table是“居家的本质”，无需妥协的独特设计作品，用来装饰独特的环境。

*“Nothing in nature is imperfect. Imperfect is just our way of looking at it.”  
Nàtür is an artisan's piece born from a board or french oak.  
The name is Piedmontese dialect to emphasise his place of birth. Nàtür Table is “The Essence at Home”, an authentic piece of design without compromises to furnish an exclusive environment*



法国橡木桌

*French oak table.*

尺寸规格  
210cm X 100cm

**Size**  
210cm X 100cm





# Aria系列-椅子

## Aria Collection Chairs



DORO Design



餐厅 Dining room

“aria”系列家具运用极简的设计，将纯色金属进行切割和重组形成不同的家具。比如像桌面、置物架和椅子等家具表面则是由片钢制成的，营造出垫子的错觉。坚实的哑光色彩赋予了家具一种温暖感。

*The “aria” collection items are created from a single iron rod, cut and reassembled to form the frames. The flat surfaces like tabletop, shelves and seat are made from single sheets of steel creating the illusion of a cushion. Solid matte colours give the furniture a sense of warmth.*



黑色镀锌铁模块化家具系统

*Black galvanised iron modular furniture system*

尺寸规格

45cm X 45cm X 90cm

Size

45cm X 45cm X 90cm



# Aria系列-置物架

## Aria Collection Shelves



DORO Design



餐厅 Dining room

“aria”系列家具运用极简的设计，将纯色金属进行切割和重组形成不同的家具。比如像桌面、置物架和椅子等家具表面则是由片钢制成的，营造出垫子的错觉。坚实的哑光色彩赋予了家具一种温暖感。

*The “aria” collection items are created from a single iron rod, cut and reassembled to form the frames. The flat surfaces like tabletop, shelves and seat are made from single sheets of steel creating the illusion of a cushion. Solid matte colours give the furniture a sense of warmth.*

彩色铁质书架

*Colored iron shelve.*

尺寸规格

40cm X 40cm X 160cm

**Size**

40cm X 40cm X 160cm



# 定制悬挂收纳

## Custom-made Furniture



QUADRILATERO

• SOUL AND MATTER •

QUADRILATERO



餐厅 Dining room

由镀锌铁制成的管状元素，颜色为黑色、银色或金色，穿梭在内外之间，形成内外、上下之间的联系。  
这个“悬挂”系统简单易组，充满了能够激发使用者创造力的模块化组件。它具有简单且便捷的安装固定方式，允许从上方、从常常未被利用的空间开始，真正地重新解读环境。  
无穷无尽的配件种类能够转变所有类型的环境：花瓶架、搁板、衣架、储物元素以及画框挂架系统。

*Tubular elements made of galvanized iron in black, silver or gold, running inside and outside and creating a liaison between inside and outside, between above and below. The “suspended” system is simple to compose, full of modular components capable of stimulating the creativity of those who want to use it. It has a simple and easy installation fixing that allows a real reinterpretation of the environment, starting from above, from often unused spaces. An endless range of accessories transforms all types of environments: vase holders, shelves, clothes hangers, storage elements and picture hanging system.*

黑色镀锌铁质模块化家具系统

*Black galvanised iron modular furniture system*

尺寸规格  
可定制化

**Size**  
*Dimensions adaptable according to needs.*





# 横向管灯

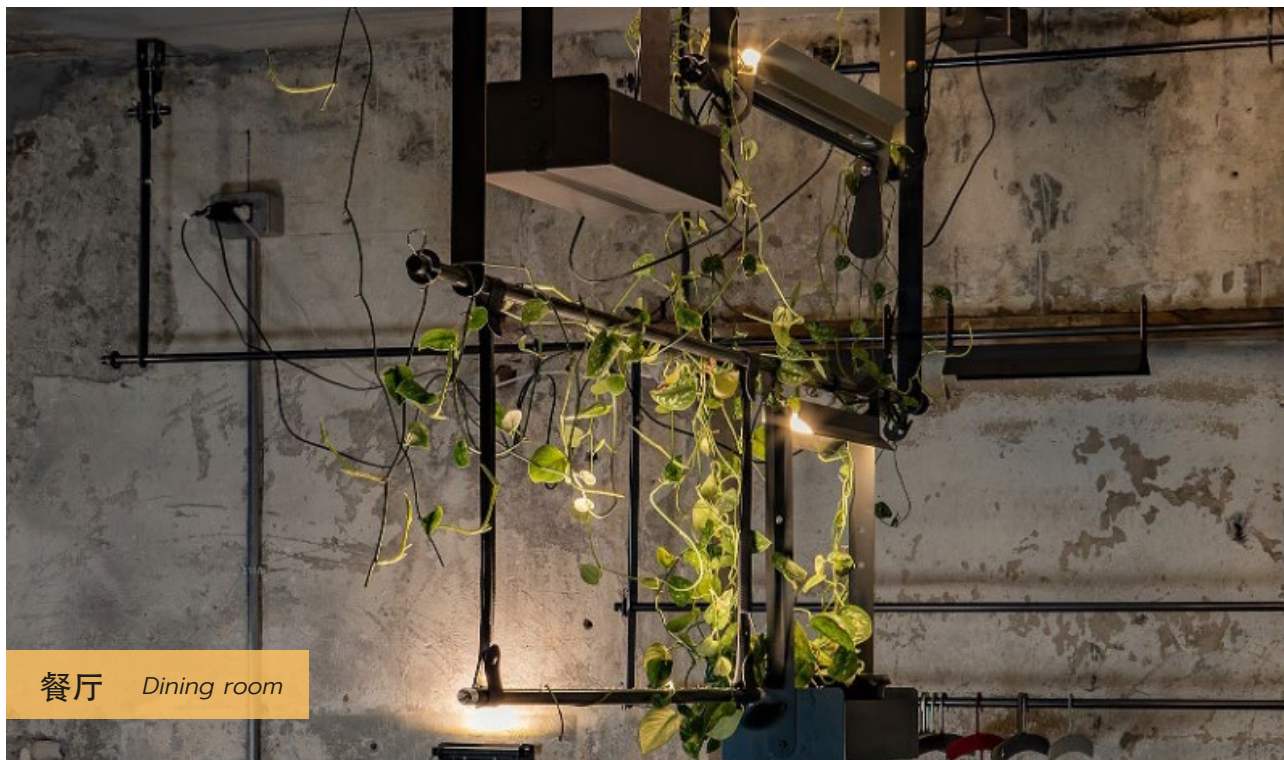
## Lampada Tubo Orizzontale



QUADRILATERO

• SOUL AND MATTER •

QUADRILATERO



餐厅 Dining room

这款镀锌钢制成的LED管状灯条有黑色、银色或金色可选，并以铝材完成表面处理。

它们可以作为墙壁烛台或作为垂直或水平的吊灯使用。

光束的强度可以通过简单的手势进行调整。

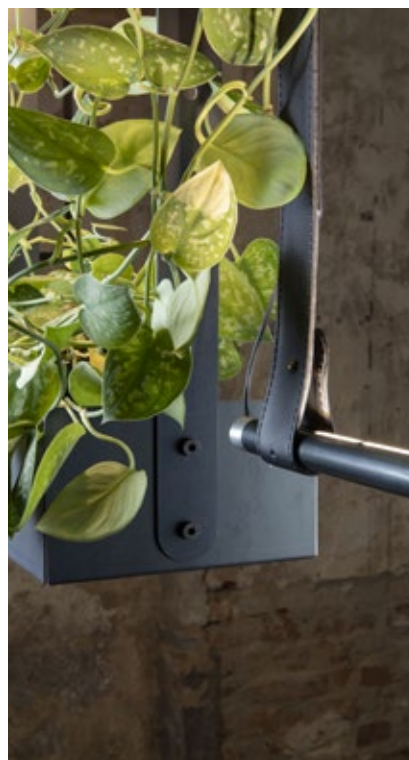
它可以完全整合，为Stagera书柜、Stagera柜子以及模块化悬挂系统提供照明。可以选择钢制或皮革附件。

*Galvanized steel LED tubular bars in black, silver or gold are finished in aluminum.*

*Available as wall sconces or as vertical or horizontal pendant lamps.*

*The light beam is adjustable through a simple hand gesture.*

*Fully integrable for lighting the Stagera bookcase and Stagera cabinet and the Modular Suspended System. There is a choice of steel or leather attachments*



黑色镀锌LED灯

*Black galvanised LED lamp*

尺寸规格  
103 cm

**Size**  
103 cm

# Stalattite 灯具

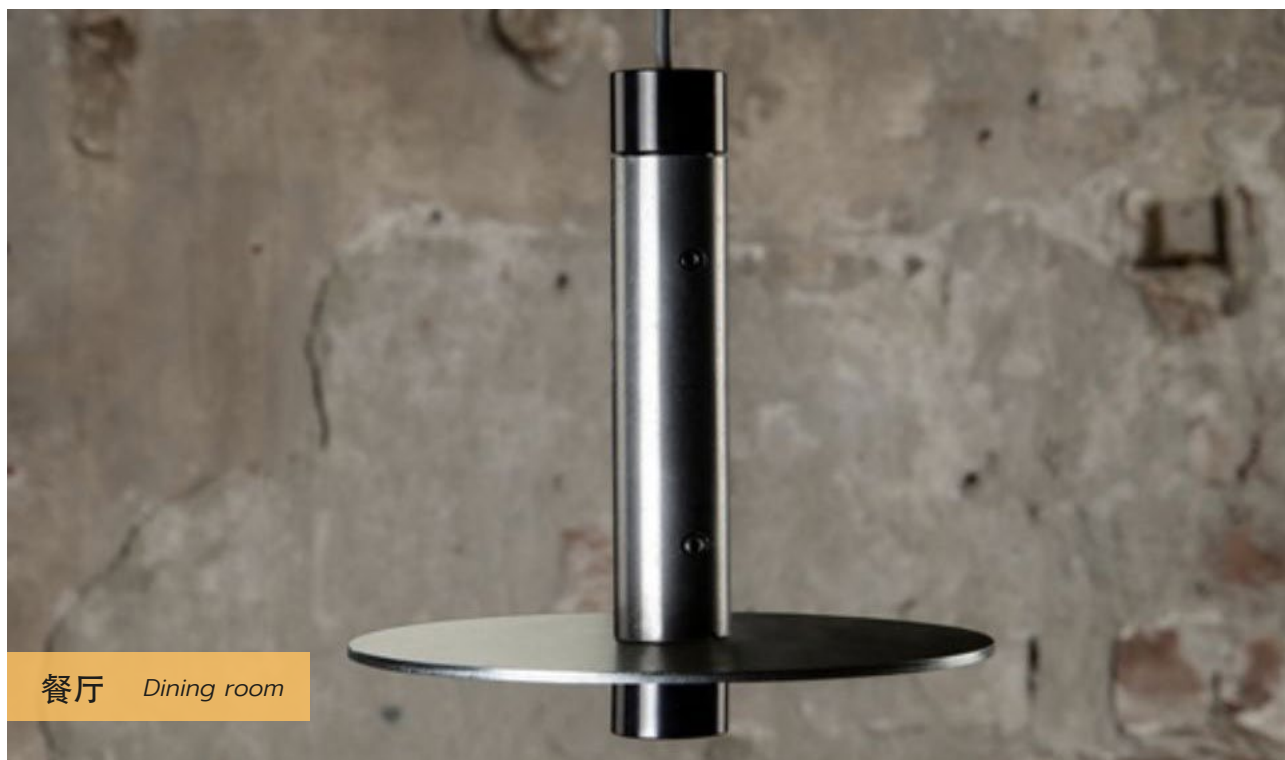
## Lampada Stalattite



QUADRILATERO

• SOUL AND MATTER •

QUADRILATERO



餐厅 Dining room

这款管状LED灯由一根蜡封的钢管制成，其中一个旋转的铝制端头上装有一个LED点光源。有多种不同的表面处理方式可供选择。  
这款LED点光源吊灯有极简版本和带有横向板的版本可供选择。

*Tubular LED light made of a waxed steel tube with a point led on one of the two turned aluminum ends. Available in different finishes.  
The LED point suspension lamp is available in the minimal version or with transverse plate.*

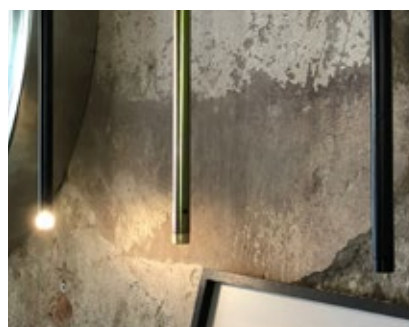


黑色镀锌LED灯

*Black galvanised LED lamp*

尺寸规格  
60 cm

Size  
60 cm

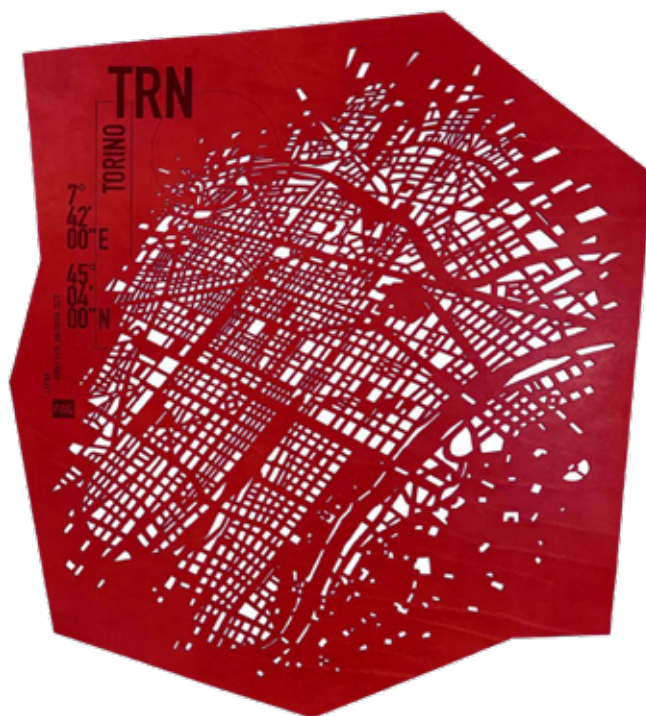


# 城市地图装饰

## Leather Map

F&F Frank&Frank

FRANK&FRANK



餐厅 Dining room

设计过程的特点在于深度融合手工艺术创作和技术创新。  
绘制城市是一个从真实城市图像不断地做减法到几乎是抽象结构的艺术过程：最终呈现的是城市空间的几何抽象形态，生活和艺术在此相遇。皮革毫无保留地展示出时光在其表面留下的纹理，这种自然生成的装饰体现了我们项目的真正魅力：不完美之美。  
接着，皮革将会进行激光切割以获取其形状，并进行手动清洁以消除所有的瑕疵。这就像是先去除，然后再创造。

*The design process is characterized by a deep mix between manual artistic creation and technological innovation. Drawing cities is an artistic process of reduction from the real city image to an almost abstract structure: the result is a geometric mosaic where daily life and art meet. The leathers proudly show the action that time generates on their surfaces, a sort of spontaneous ornament, representing the true charm of our project: the beauty of imperfection. Subsequently the skin is going to be laser-cut to extract its shapes and manually cleaned to eliminate all imperfections. It is like to remove, to then create.*

皮革家居装饰

Leather home decoration.

尺寸规格  
可定制化

Size  
Variable dimensions





# 灵活橱柜

## Flexible Cupboard



CAVALLARO CASA



餐厅 Dining room

这是一款定制的木制橱柜，其尺寸、材料和颜色都可以根据房屋的环境进行调整。隐藏式门和推车可以根据需要进行布局。感谢家具中与空间互动的元素，使得它能够按照需要进行变化和调整。这款家具不仅是插件和家庭环境之间的过滤器，同时也是一种能够改变其所处空间的家具元素。

*Custom-made wooden cabinet whose dimensions, materials and colours are adaptable to the context of the house. The concealed doors and trolleys can be arranged as required. The furniture changes thanks to its elements that interact with the space, transforming it as required. The furniture is both a filter between the plug-in and the home, and a furnishing element capable of modifying the space in front of it.*

木质家具

Wood furniture

尺寸规格  
可定制化

Size  
Dimensions adaptable according to needs.



K10

# 水龙头-Moderno系列

## MODERNO MR0030/U



GIULINI GIOVANNI



餐厅 Dining room

我们提供三种开放定制的设计方案——现代、经典、当代，旨在满足不同的浴室需求，无论是个人定制还是项目定制。Giulini G. Rubinetteria 倾力打造豪华浴室体验，我们在最新潮的产品系列中融入了独特的工业风格，而在经典产品系列中，则巧妙地镶嵌了璀璨的施华洛世奇水晶。不论你的需求是何种风格，我们都能满足。

*Three stylistic proposals open to customisation for both private and project - modern, classic, contemporary - to meet all the needs of the bathroom world. Giulini G. Rubinetteria meets luxury thanks to precious industrial chic on trendy finishes for the most modern collections and embellishes with sparkling Swarovski the Crystal series of the classic collections.*

可调节的洗脸盆水龙头，旋转式水嘴

*Reclinable wash-basin mixer, swivel spout, Up&Down pop up waste.*

尺寸规格  
可定制化

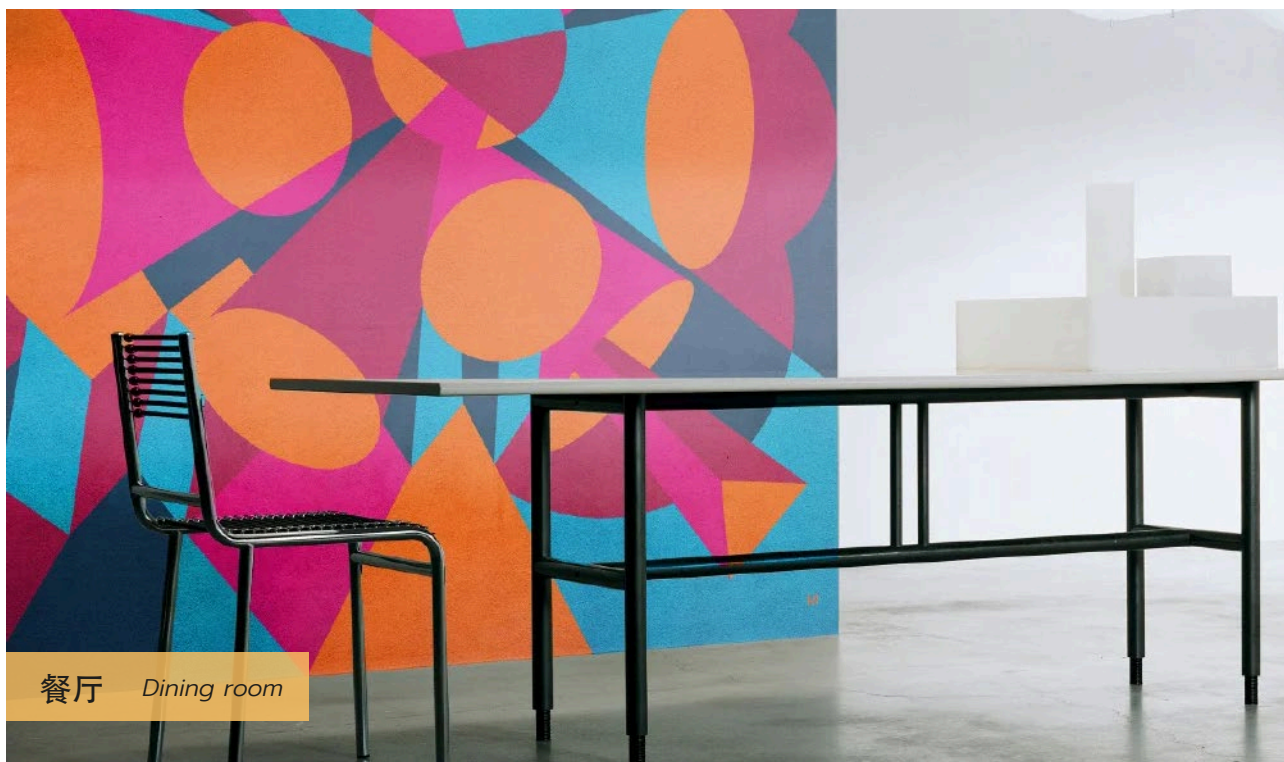
**Size**  
*Dimensions adaptable according to needs.*

# 艺术墙绘

## Murales

MARZIA  
BOAGLIO  
STORY ART DESIGNER

MARZIA BOAGLIO



餐厅 Dining room

定制壁画的设计灵感源于未来主义，力求打造出能引人回味又富有当代感的三维立体感。每一件作品都倾诉着独特的情感，精美的工艺制作，以及风格、技术和材料之间的独特对比，使其成为超越时代的艺术品。这就是我们打造的壁画，不仅让人联想到过去，更展现了未来的时尚风格。

*Tailored murals whose shapes recall futurism, seeking a three-dimensional expressive force that recalls the past but becomes contemporary. The sentiment narrated in each piece, the perfect workmanship and the revolutionary contrast between style, technique and material make it a timeless object.*



墙体彩绘

Mural

尺寸规格  
可定制化

Size  
Dimensions adaptable according to needs.



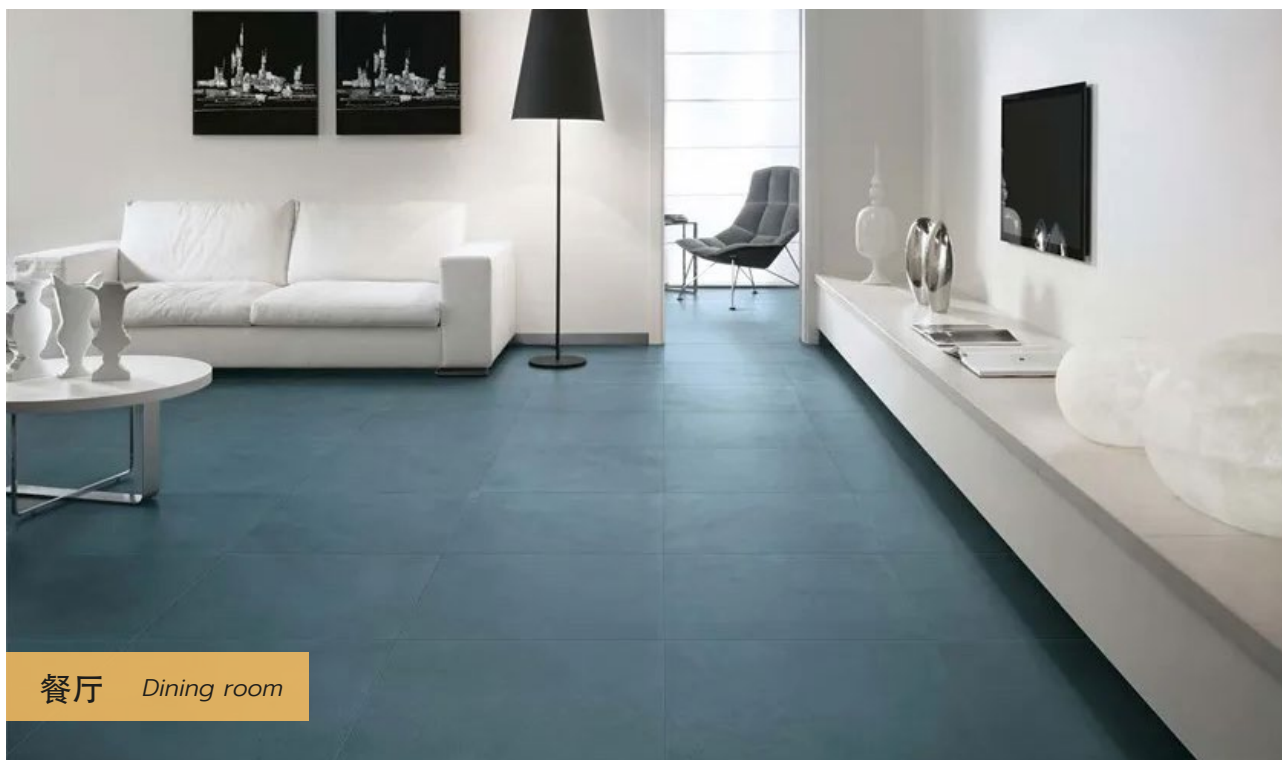


# 地砖-Avio系列

## Color Now Floor Avio V1



FAP CERAMICHE



Color Line为浴室和厨房提供白色瓷质瓷砖，以现代、时尚和简约风格为特点，色彩系列光鲜亮丽，走在时尚前沿。六种颜色的设计灵感来源于自然元素：Avio（蓝色）、Salvia（鼠尾草绿）、以及Marsala（深红色），色调强烈且高雅；Beige（米色）、Ghiaccio（冰色）、以及Perla（珍珠色），则表现了精细且雅致的色彩渐变。

*Color Line offers bathroom and kitchen tiles in white porcelain, characterized by a modern, contemporary, and essential mood, in a glamorous and trendy color range. Six colors that draw inspiration from natural elements: Avio (blue), Salvia (sage), and Marsala (deep red), intense and elegant shades, Beige, Ghiaccio (ice), and Perla (pearl), nuances characterized by sophisticated refinement.*

瓷质炻器瓷砖

Porcelain stoneware tile

尺寸规格  
60cm X 60cm

Size  
60cm X 60cm

# 地砖-Nativa 系列

## Nativa Grey Out R11



FAP CERAMICHE



FAP陶瓷公司推出了名为"Nativa"的新系列瓷砖，赞美了石材的复兴力量，并在极简主义和引人深思的设置之间创新其美学。大自然创造了令人震撼的图像和情感，FAP陶瓷则引发了这些图像和情感，赋予优雅新的含义。



*FAP Ceramics celebrates the revitalizing power of stone and innovates its aesthetics between minimalism and evocative settings with the new collection of porcelain stoneware surfaces called "Nativa". Where nature creates astonishing images and emotions, FAP's ceramics evoke them to give a new meaning to elegance.*

瓷质炻器瓷砖

Porcelain stoneware tile

尺寸规格  
80cm X 80cm

Size  
80cm X 80cm

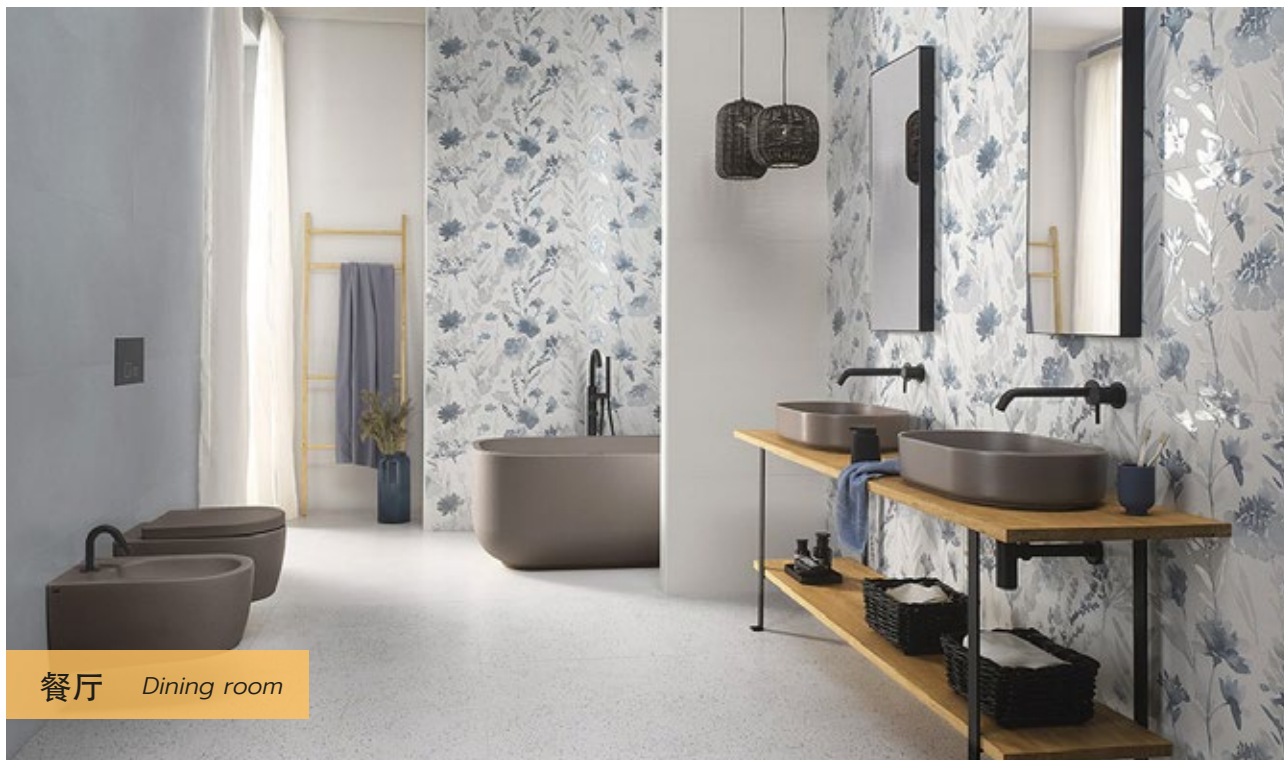


# 地砖-Milano Mood 系列

Milano Mood Gocce Ghiaccio Satin



FAP CERAMICHE



FAP陶瓷公司扩大了其树脂效果的陶瓷表面系列，推出了名为“米兰情调”的新精致系列。这个广泛而具有层次感的项目以柔和的色彩和当代装饰为特色，是深入研究和先进材料处理的结果。



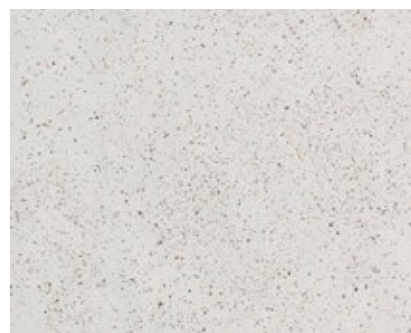
*FAP Ceramics expands its range of resin-effect ceramic surfaces and presents the new refined collection called "Milano Mood." This extensive and articulated project is characterized by soft colors and contemporary decorations, the result of in-depth research and advanced material processing.*

瓷质炻器瓷砖

Porcelain stoneware tile

尺寸规格  
80cm X 80cm

Size  
80cm X 80cm





# 可水洗墙漆

## Magister wall paint



COVEMA CERNICI



餐厅 Dining room

基于乙烯基树脂和特殊球形填料的墙面涂料，使产品具有卓越的易于应用性、高度的表面抗力和极强的清洗性。特殊的配方使MAGISTER表现出高度的易刷性、流动性和遮盖力，使得涂层呈天鹅绒般的质感并具有防眩光特性。由于其低挥发性有机化合物（VOC）含量，它可以在任何室内生活空间中使用。适用于需要优秀清洗性（可清洁性）和简单维护的环境。

Wall paint based on vinyl resins and special spherical fillers that give the product exceptional ease of application, high surface resistance and maximum washability. The special formulation characterises MAGISTER for high brushability, flow and opacity that make the finish velvety and anti-glare. Thanks to its low Volatile Organic Compounds (VOC) content, it can be applied in any indoor living space. Suitable for environments requiring excellent washability (cleanability) and easy maintenance.

墙漆

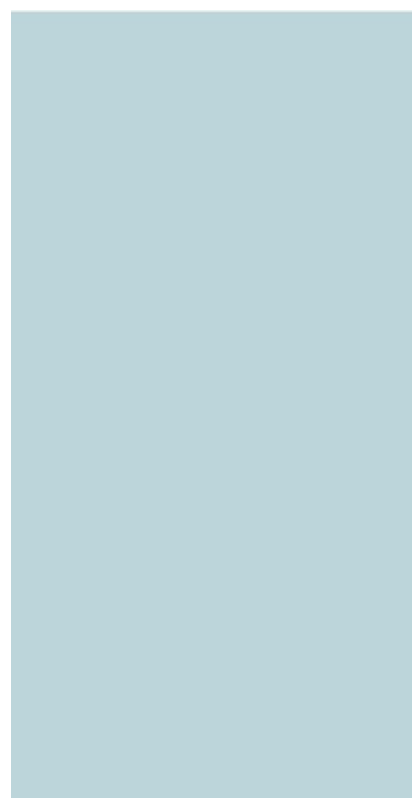
Wall paint.

尺寸规格

//

Size

//



# 卫浴

## Lima Cod. LM800 Sliding rail



GRAFFIO DESIGN



浴室 Bathroom



追求简约而不简单。Graffio推拉式壁挂花洒以其流线型设计、坚固的部件和亮眼的镀铬装饰脱颖而出，与淋浴喷头的搭配无懈可击。无论搭配任何款式的水龙头和配件，都能达到和谐统一。

*Simple things done well. The sliding wall mount Graffio distinguishes itself by its streamline shape, solid components and shiny chrome finishing, perfectly matching shower heads. Simple to match to any taps and accessories*

圆形黄铜滑轨，配有恒温混合器，THETA ABS 手持花洒，灵活软管

### 尺寸规格

H 89 cm Ø 18 mm Ø 24,8 mm

*Round brass sliding rail with thermostatic mixer, THETA ABS handshower, flexible hose*

### Size

*H 89 cm Ø 18 mm Ø 24,8 mm*

# 淋浴龙头-Myring系列

## MYRING MRO115W2KB



GIULINI GIOVANNI



浴室 Bathroom

MyRing是Giulini的浴室水龙头系列，由Gianluca Paludi精心设计。这个系列将形式与内容融为一体，为创新和原创性提供了空间。这是一个可定制的镀铬黄铜系列，您可以选择对比鲜明的环形颜色，这个颜色不仅是浴室的焦点，更是水龙头中独一无二、独具特色的元素

*MyRing is Giulini's collection of bathroom taps, designed by Gianluca Paludi.*

*A collection where form and content come together to leave room for creativity and originality. A customizable chrome-plated brass collection, where it's possible to choose the contrasting ring color, which becomes not only the protagonist of the bathroom, but also the unique and exclusive element of the taps.*

内藏式淋浴龙头，配有2路分水器，黄铜淋浴头，内置双功能淋浴套件

*Concealed shower taps with 2 ways diverter, brass shower head, built-in duplex shower kit.*

**尺寸规格**

H 49 cm Ø 55 mm Ø 20 mm

**Size**

H 49 cm Ø 55 mm Ø 20 mm



# 沐浴露瓶-Moderna系列

## MODERNA RG0836A



GIULINI GIOVANNI



浴室 Bathroom

满足浴室需求的现代风格设计提案。通过流行的精致工业风完成，Giulini G. Rubinetteria迎合了奢华需求。  
‘Moderna’系列提供一系列浴室配件，用以完善和装饰空间。

*Modern stylistic proposals to meet all the needs of the bathroom world. Giulini G. Rubinetteria meets luxury thanks to precious industrial chic on trendy finishes.*

*The ‘moderna’ series offers a range of bathroom accessories to complete and embellish the space .*

洗手液盒

*Liquid-soap dispenser.*

尺寸规格

H 184 mm Ø 76 mm

**Size**

*H 184 mm Ø 76 mm*

# 浴巾架-Moderna系列

## MODERNA RG0848



GIULINI GIOVANNI



浴室 Bathroom

满足浴室需求的现代风格设计提案。通过流行的精致工业风完成，Giulini G. Rubinetteria迎合了奢华需求。  
‘Moderna’系列提供一系列浴室配件，用以完善和装饰空间。

*Modern stylistic proposals to meet all the needs of the bathroom world. Giulini G. Rubinetteria meets luxury thanks to precious industrial chic on trendy finishes.*

*The ‘moderna’ series offers a range of bathroom accessories to complete and embellish the space .*

毛巾杆

*towel rack.*

尺寸规格

36,5 cm X 6 cm  
50 cm X 6 cm

**Size**

36,5 cm X 6 cm  
50 cm X 6 cm

# 挂衣钩-Moderna系列

## MODERNA RG0815



GIULINI GIOVANNI



浴室 Bathroom

满足浴室需求的现代风格设计提案。通过流行的精致工业风完成，Giulini G. Rubinetteria迎合了奢华需求。  
‘Moderna’系列提供一系列浴室配件，用以完善和装饰空间。

*Modern stylistic proposals to meet all the needs of the bathroom world. Giulini G. Rubinetteria meets luxury thanks to precious industrial chic on trendy finishes.*

*The ‘moderna’ series offers a range of bathroom accessories to complete and embellish the space .*

衣服挂钩

*Clothes hanger*

尺寸规格

H 45 mm Ø 40 mm

**Size**

*H 45 mm Ø 40 mm*



# 挂钩-Moderna系列

## MODERNA RG0812



GIULINI GIOVANNI



浴室 Bathroom

满足浴室需求的现代风格设计提案。通过流行的精致工业风完成，Giulini G. Rubinetteria迎合了奢华需求。  
‘Moderna’系列提供一系列浴室配件，用以完善和装饰空间。

*Modern stylistic proposals to meet all the needs of the bathroom world. Giulini G. Rubinetteria meets luxury thanks to precious industrial chic on trendy finishes.*

*The ‘moderna’ series offers a range of bathroom accessories to complete and embellish the space .*

卫生纸挂钩

*Roll-holder.*

尺寸规格

H 54 mm Ø 110 mm

**Size**

*H 54 mm Ø 110 mm*

# 水龙头-Myring系列

## MYRING MRO112/U

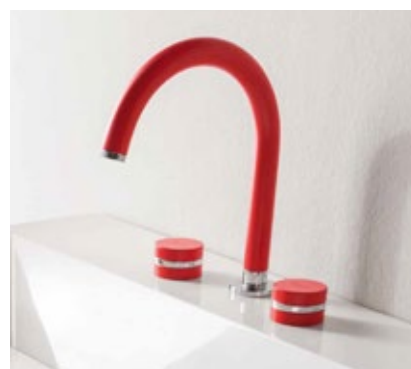


GIULINI GIOVANNI

浴室 Bathroom



MyRing是Giulini的浴室水龙头系列，由Gianluca Paludi精心设计。这个系列将形式与内容融为一体，为创新和原创性提供了空间。这是一个可定制的镀铬黄铜系列，您可以选择对比鲜明的环形颜色，这个颜色不仅是浴室的焦点，更是水龙头中独一无二、独具特色的元素



*MyRing is Giulini's collection of bathroom taps, designed by Gianluca Paludi.*

*A collection where form and content come together to leave room for creativity and originality. A customizable chrome-plated brass collection, where it's possible to choose the contrasting ring color, which becomes not only the protagonist of the bathroom, but also the unique and exclusive element of the taps.*

三孔洗手盆套装，旋转式水嘴

3-hole wash-basin set, swivel spout, 1 1/4 pop-up waste.

尺寸规格  
可定制化

**Size**  
25,2 cm X 17,6 cm  
knobs: H 30 Ø 50 mm



# 大理石洗手盆

## Lavabo Ellittico

QUADRILATERO



QUADRILATERO

• SOUL AND MATTER •



浴室 Bathroom

此洗脸盆是通过对大理石块体进行磨削而制作的，其设计理念源于Quadrilateral的数学构想，使得每个洗脸盆都成为无可比拟的独特存在。

由于石材选择的独特性，每一件产品都是独一无二的，其纹理各异。可选用不同种类的大理石。

*Washbasin made by milling a marble block from solid, with mathematics designed by Quadrilateral, to obtain a one-of-a-kind washbasin. Each piece is unique given the choice of stone material with distinctive veining. Available in different marbles.*



大理石面盆

Marble washbasin.

尺寸规格

65 cm X 40 cm

Size

65 cm X 40 cm



# 工业风吊灯

*Lampade tornite*



QUADRILATERO

• SOUL AND MATTER •

QUADRILATERO



Quadrilateral's吊灯由黑色镀锌铁、银色和金色构成。银色的镀锌提供了出乎意料的色彩效果。它们有多种尺寸可供选择，可以完美地集成到Sospeso模块化系统中。

*Quadrilateral's pendant lamps are made of black galvanized iron, silver and gold. The silver-colored galvanizing offers totally unexpected color effects. Available in different sizes, they can be integrated into the Sospeso modular system.*

由冲压金属片制成的灯具  
有多种镀锌颜色可供选择

*Lamp made of sheet metal turned.  
Available in the different galvanizing.*

## 尺寸规格

Ø25 cm X 19 cm, Ø28,7 X 21  
cm, Ø14,5 X 24 cm

## Size

Ø25 cm X 19 cm  
Ø28,7 X 21 cm  
Ø14,5 X 24 cm

# 马赛克瓷砖

Roma Gold Calacatta Delicato/Onice Miele/Nero Mosaico

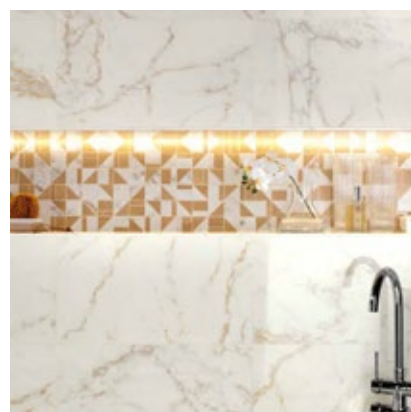


FAP CERAMICHE



Roma Gold丰富了FAP的Roma、Roma Classic和Roma Diamond系列的大理石效果目录。这些不同的大理石效果和尺寸，延续了高雅和闪亮装饰瓷砖的潮流。新款设计是墙砖和瓷质石器的完美结合，其共同特点是经典与生动的风格相得益彰。

*Roma Gold enriches the marble-effect catalogue joining FAP's Roma, Roma Classic and Roma Diamond ranges. These different marble effects and sizes continue the trend of elegant and shiny decorative tiles. The new references are a combination of wall tiles and porcelain stoneware in which the common thread is a balanced mix of classic and eclectic styles.*



瓷质炻器瓷砖

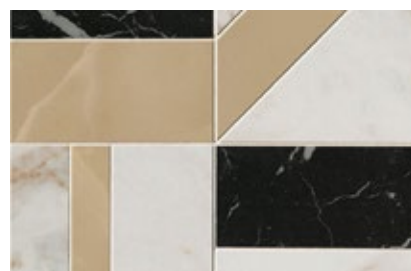
Porcelain stoneware tile

尺寸规格

25 cm X 75 cm  
80 cm X 80 cm

Size

25 cm X 75 cm  
80 cm X 80 cm



# 黑色大理石纹理瓷砖

## *Roma Diamond Nero Reale*

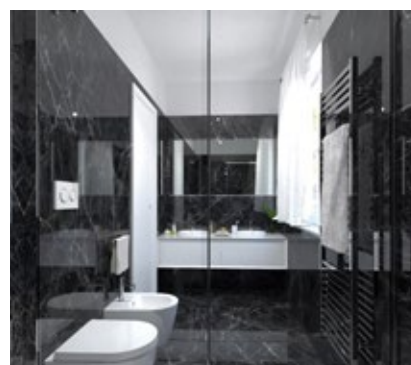


FAP CERAMICHE



Roma Diamond是一系列专门展现闪亮大理石永恒魅力的陶瓷地板和白色墙面涂料。该系列源于罗马系列，以其哑光和缎面光泽为特色，并且融入了一系列极其光亮的现代和当代陶瓷大理石。

*Roma Diamond is a range of ceramic flooring and white body wall coverings entirely dedicated to the timeless appeal of shiny marble. This series was created out of the Roma collection, characterised by matt and satin finishes and enriched with a series of modern and contemporary ceramic marbles with an extremely shiny finish.*



瓷质炻器瓷砖

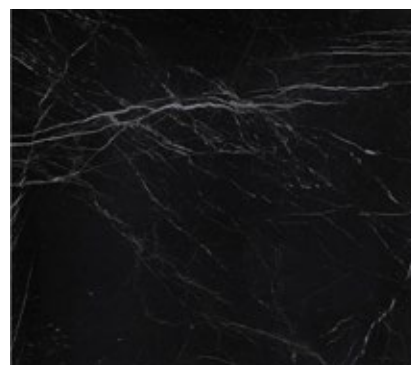
Porcelain stoneware tile

尺寸规格

25 cm X 75 cm  
80 cm X 80 cm

Size

25 cm X 75 cm  
80 cm X 80 cm





# 梳妆台-F4系列Servo

testatonda

*F4 collection Servo TT07*

TESTATONDA



选择了既简洁又能刺激想象力的形状，由此诞生了F4系列。该系列由七种互补的产品组成，这些产品是通过组装二十七个独立部分得到的。

*The selection of simple forms, which are simultaneously capable of stimulating the imagination, have given rise to F4 collection, made of seven complementary products, obtained by assembling twenty-seven single parts.*

可组装的木质衣帽架

*Assemblable wooden valet.*

尺寸规格

H 185cm X W 80cm X D 60cm

Size

H 185cm X W 80cm X D 60cm



B14

# Gioco梳妆镜

Gioco

testatonda

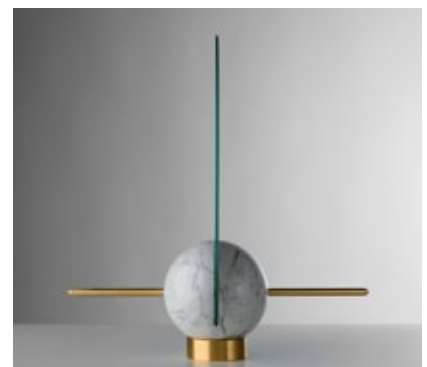
TESTATONDA



主卧 Bedroom

Gioco是一款小巧的梳妆镜。它由一个镜面圆盘、一根黄铜矛和一个圆形大理石重物构成。

*Gioco is a small dressing mirror. It consists of a mirrored disc, a brass javelin and a round marble weight.*



穿衣镜

Mirror

尺寸规格

40,6 cm X 35,5cm X 30,5 cm

Size

40,6 cm X 35,5cm X 30,5 cm

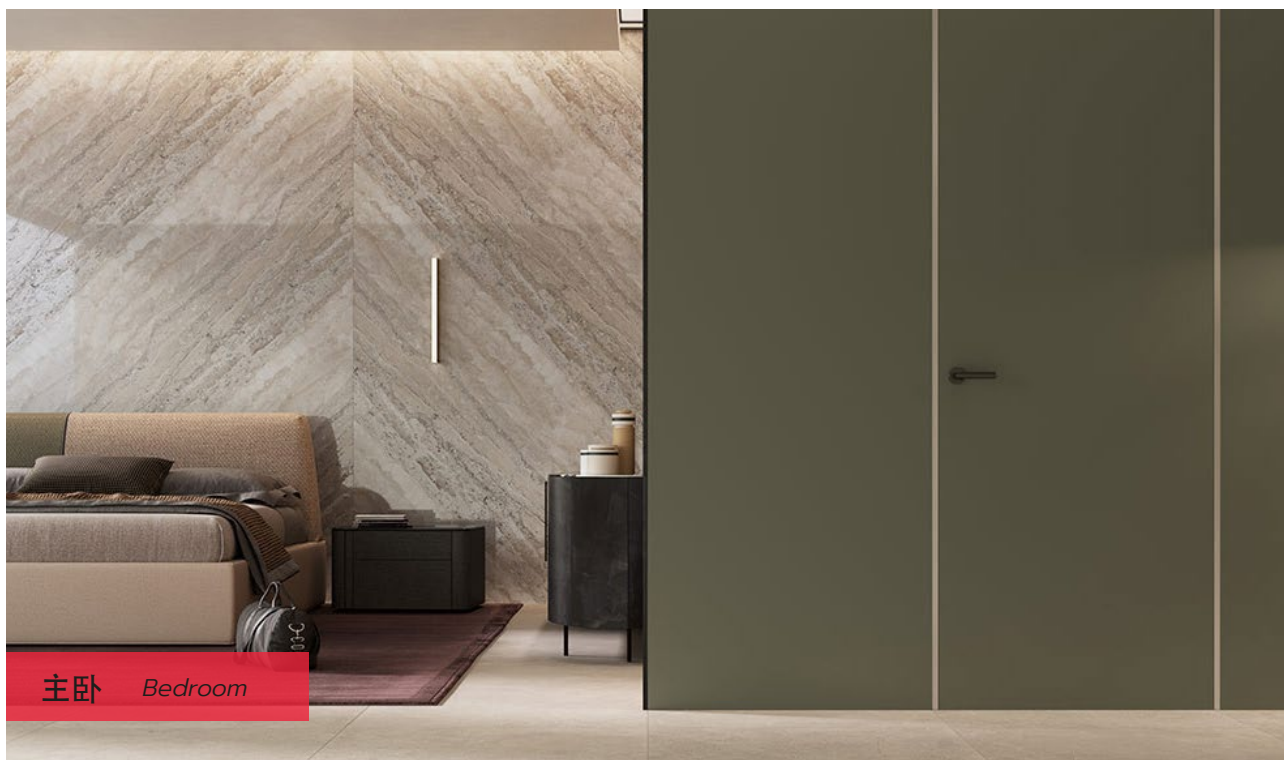


# 极简无边框门-Equa Zero

## Equa Zero

**FERRERO**  
**LEGNO** DESIGN  
TO BE OPEN

FERREROLEGNO



为满足“不断变化的审美和建筑需求”，我们设计了与墙面齐平的铰链式或滑动式室内门。门体平滑、无孔，可以用各种木材、喷漆或拉丝质地进行覆盖。

*Hinged or sliding interior door flush with the wall, designed to meet the 'evolving aesthetic and architectural requirements. The doors, smooth blind, can be covered with a variety of wood species, lacquered or brushed textures.*

超哑光漆面隐藏门

*Door Lacquered ULTRA-Matt.*

尺寸规格

H 89 cm Ø 18 mm Ø 24,8 mm

**Size**

*H 89 cm Ø 18 mm Ø 24,8 mm*

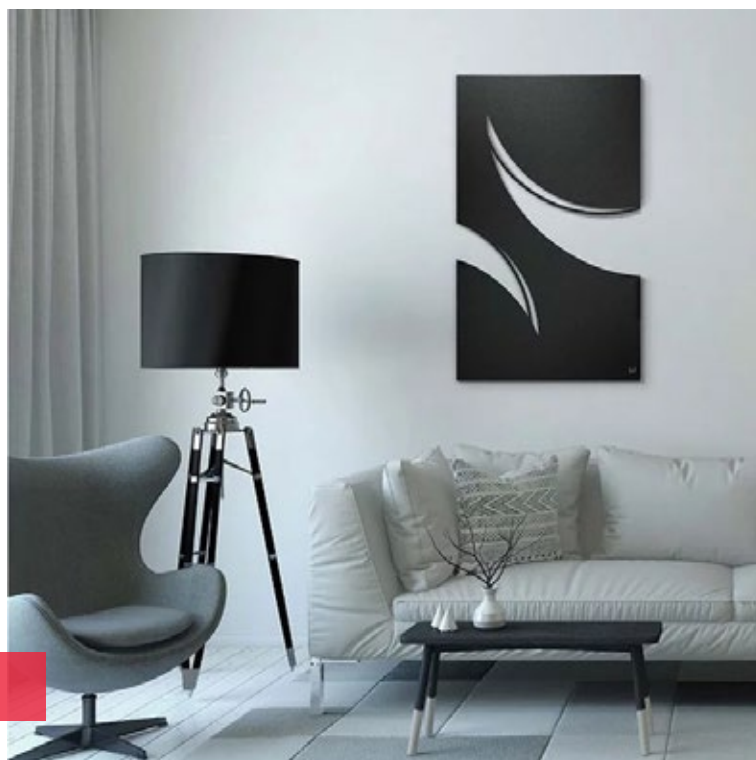


# 艺术装饰

## Allumia Venti

MARZIA  
BOAGLIO  
STORY ART DESIGNER

MARZIA BOAGLIO



主卧 Bedroom

从一片铝片中诞生的就是ALLUMIA。它既不是画作，也不是雕塑，而是将二维空间转化为三维空间的创新实现。保持表面的中性色彩，旨在强调剖面及其之后所能观察到的视觉效果。这是一种既能打破又能构造空间的画作/雕塑，与其所置之处的表面产生互动，同时营造出一种无穷无尽的感觉。本次推出的Allumia系列，期望呈现的是以沙漠为主题的效果。

*From a sheet of aluminum comes ALLUMIA. It is not a painting or even a sculpture, but the creation of a space that from two-dimensional becomes three-dimensional. Keeping the color of the surface neutral is intended to emphasize the cut and what can be seen beyond it. A painting/sculpture that dialogues with the surface on which it is placed, breaking and framing it at the same time, creating a sense of infinity. The desired finish for this edition of Allumia is based on the theme of sand.*



家居装饰配件

Home decore accessorie.

尺寸规格

60cm X 100 cm X 3,5 cm

Size

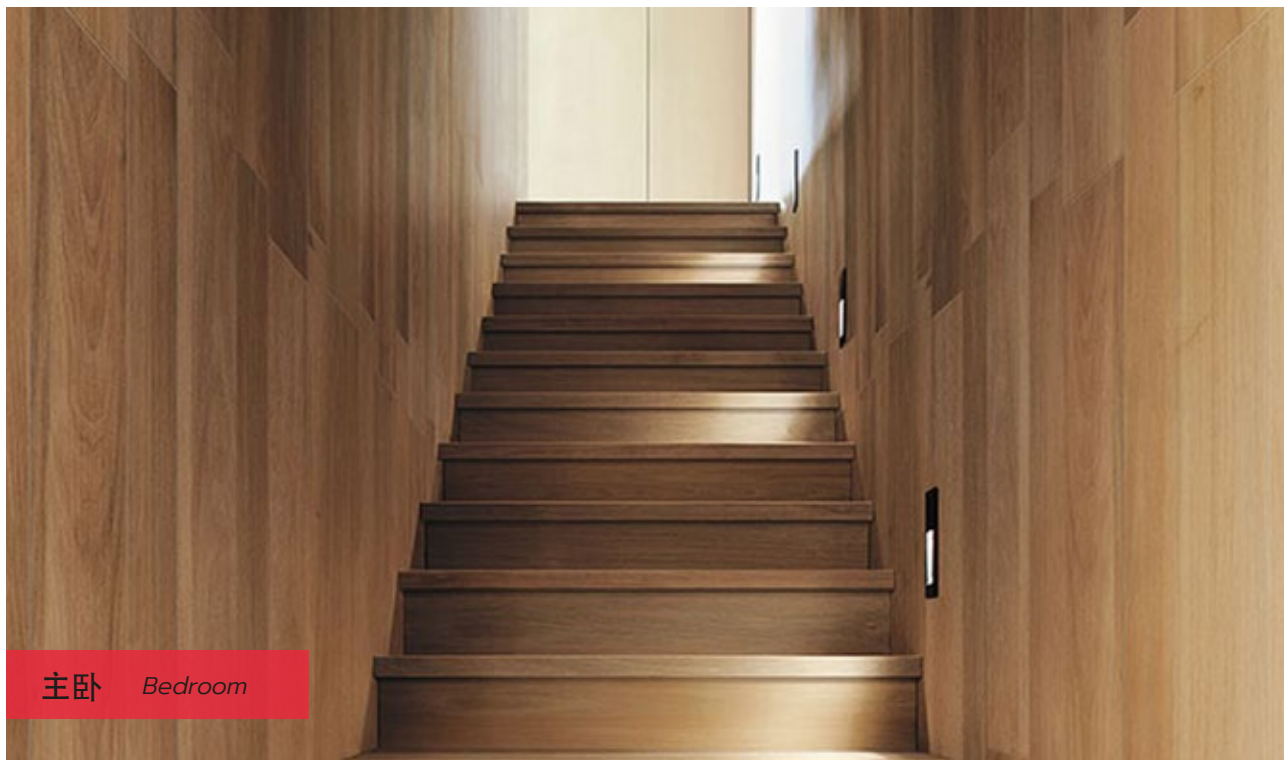
60cm X 100 cm X 3,5 cm

# 木纹地砖

## Nuances Rovere



FAP CERAMICHE



光线在温暖的表面上跳跃，透过真实的细节，包括自然的木纹和优雅的纹路，为表面赋予生机……欢迎来到 Nuances。这款仿木地板也非常适合作为墙面瓷砖使用，还有专门的“OUT”版可用于户外环境。

*Light bouncing over warm surfaces and genuine details, including natural grains and graceful veining that bring the surface to life... welcome to Nuances. This wood-effect flooring is also ideal for as a wall tiling, and comes in the “OUT” version for use outdoors.*

瓷质石器砖

Porcelain stoneware tile

尺寸规格

25 mm x 150 mm x 10 mm

Size

25 mm x 150 mm x 10 mm

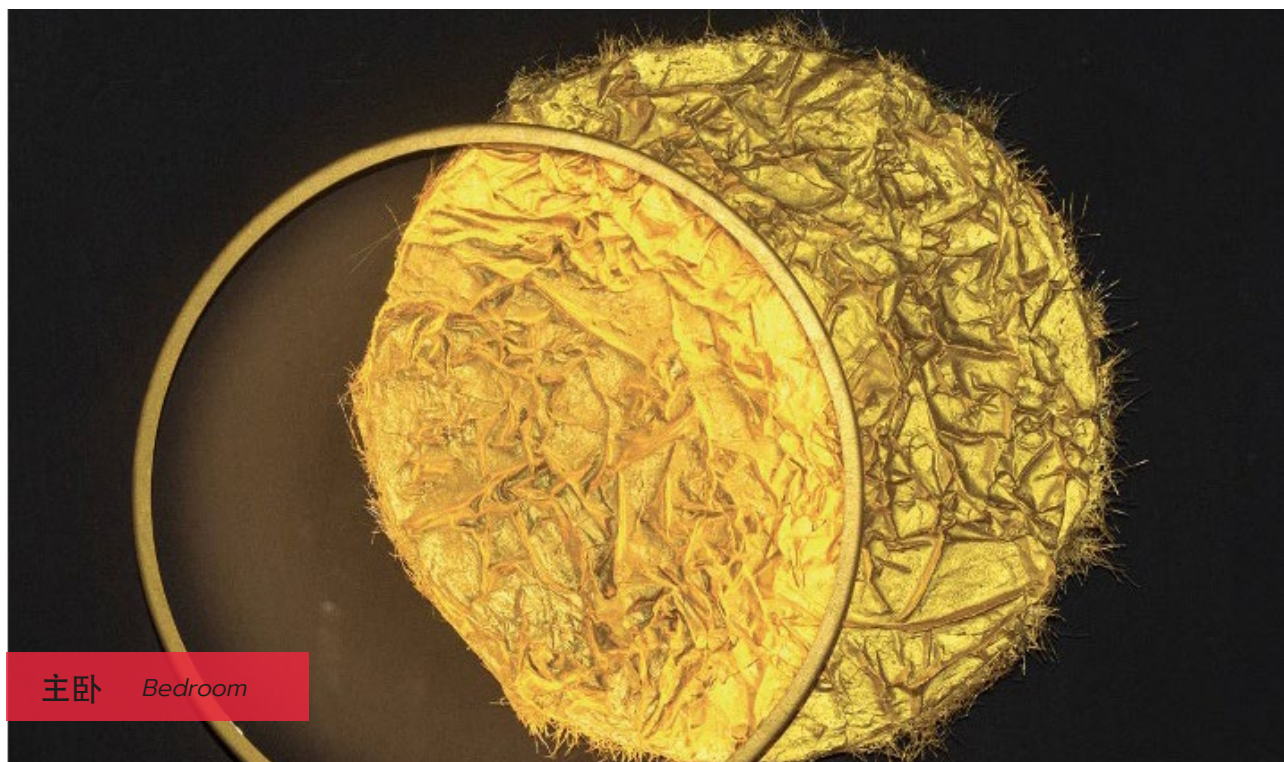


# O.Moon灯

*O. Moon*



LUCIFEROILLUMINAZIONE



黄色镀锌金属 (ZG) 结构。  
涂有金色、具有皱纹效果的玻璃纤维圆盘。

*Yellow Galvanized Metal (ZG) Structure.  
Fiberglass disc with crumpled effect painted GOLD color*

墙灯

*Wall lamp*

尺寸规格  
Ø 60 cm

**Size**  
Ø 60 cm



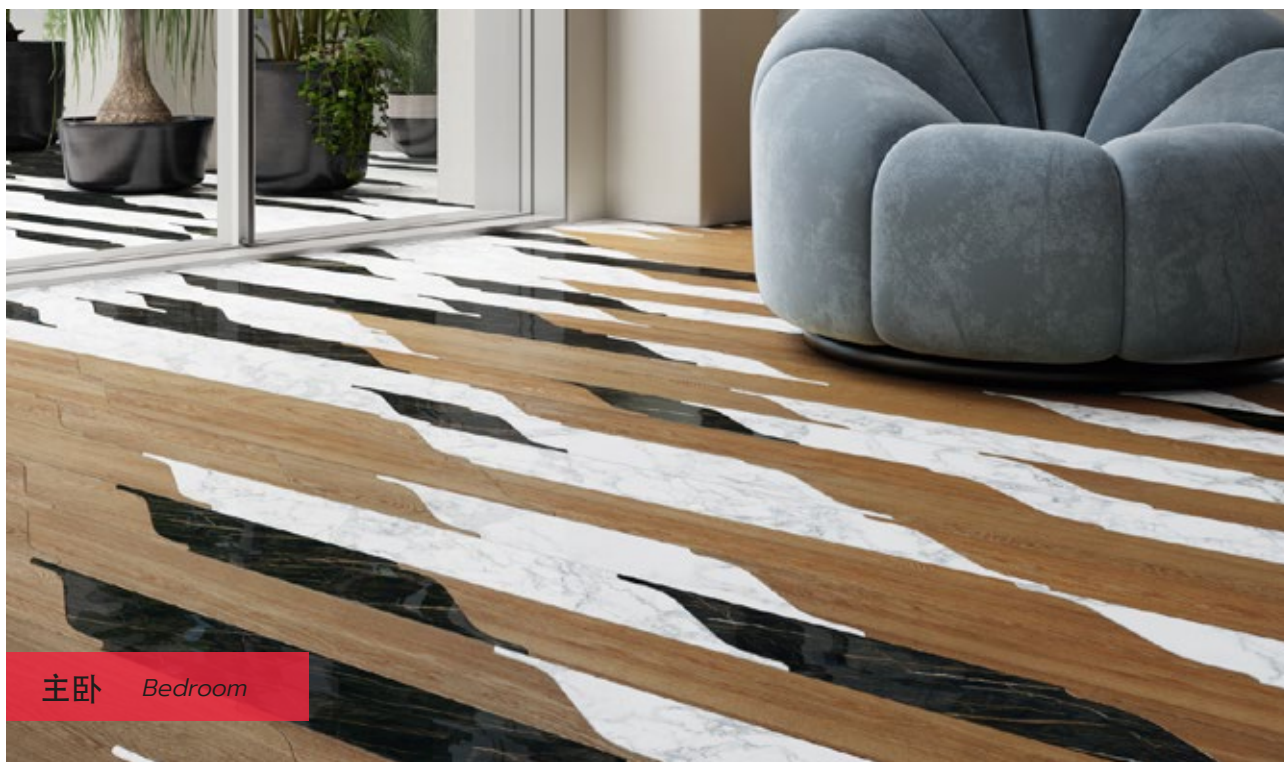


# Miraggio地砖

pininfarina

## Miraggio

PININFARINA



Miraggio, 或者说海市蜃楼, 源于视觉的概念, 是一种光学幻觉, 一种光线的反射, 能够让人的思维误解为看似实实在在的物体。名为“Miraggio”的木地板系列的设计灵感来自自然装饰元素, 就如同“海市蜃楼”一般, 可以从不同角度理解: 如同波光粼粼的水面, 木地板的切割线闪烁光泽; 或者像温暖细腻的沙地, 由风吹拂形成温柔的图案。这种以自然为灵感的木地板设计, 营造出一种舒适放松的感觉, 旨在模仿沉浸于自然之中的感觉, 减轻生活压力。

*Miraggio, or mirage, has its roots in a concept of vision, being a sort of optical illusion, a reflection of light that can trick the mind into interpreting the sight as an apparently solid thing. The Wood Floor Collection called “Miraggio is inspired by natural ornaments that just like a “miraggio” could be seen differently: like a water surface, with the sparkling cutlines of the wooden floor, or as warm and soft sand, with a gentle pattern created by the wind. This nature-inspired wooden floor design creates a relaxing sensation, aimed to reduce stress by mimicking the feeling of being immersed in nature.*

采用天然材料的白色、黑色和木质厨房

*Brushed 2- or 3-layer parquet flooring*

### 尺寸规格

15 x 150 x 700 mm, 15 x 150 x 1000 mm, 15 x 150 x 1400 mm

### Size

15 x 150 x 700 mm, 15 x 150 x 1000 mm, 15 x 150 x 1400 mm



# Piemonte Home Design<sup>n</sup>

Italian style,  
made with care